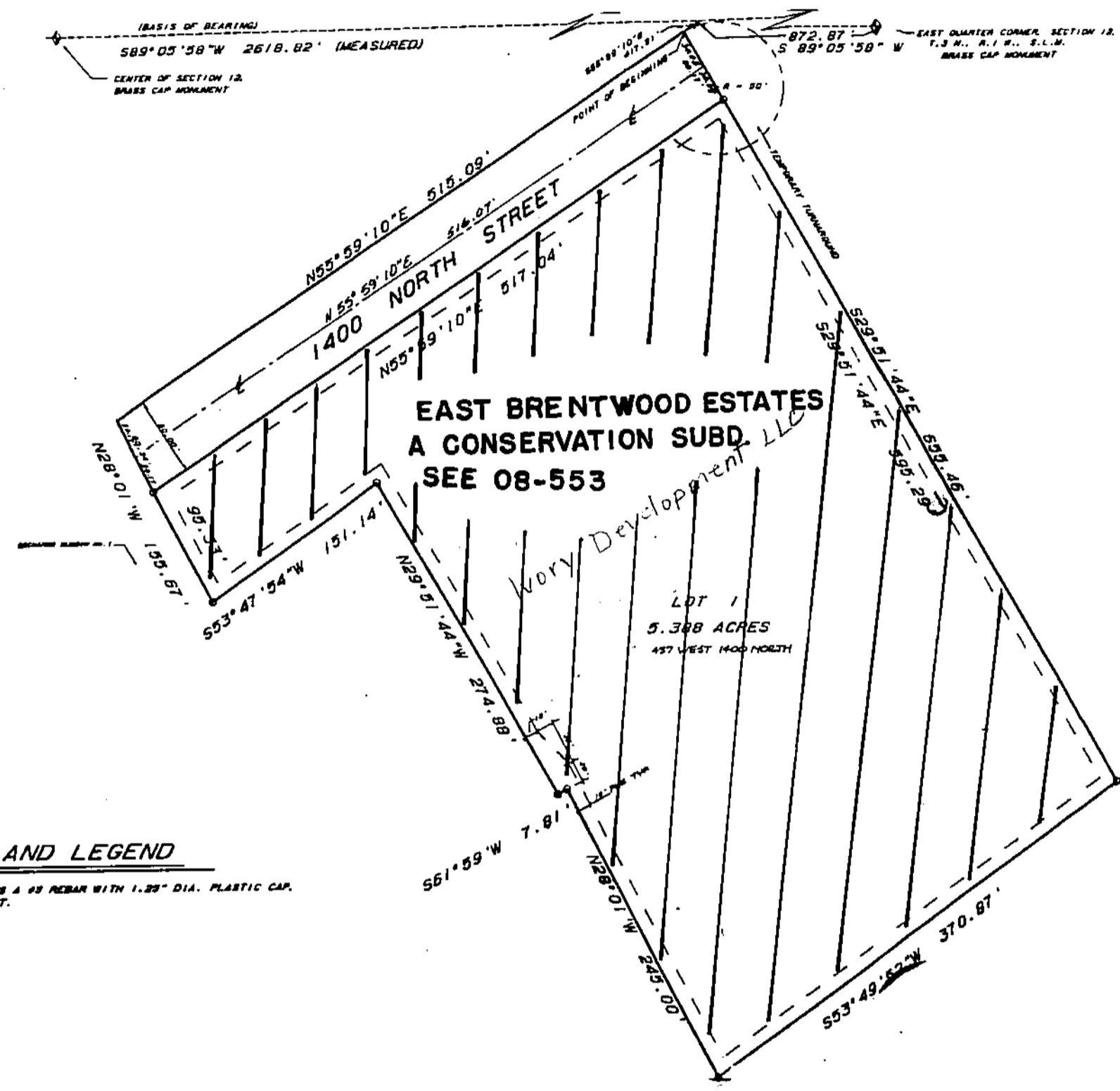


175

08

PINECREST SUBDIVISION

A PART OF THE SOUTHEAST QUARTER OF SECTION 12,
TOWNSHIP 3 NORTH, RANGE 1 WEST, SALT LAKE MERIDIAN
FARMINGTON CITY, DAVIS COUNTY, UTAH



NOTES AND LEGEND

○ INDICATES A #2 NEWMAN WITH 1.25" DIA. PLASTIC CAP, TO BE SET.

PREPARED BY: RICHARDSON SURVEYING, INC.
3448 SOUTH 100 WEST
BOUNTIFUL, UTAH 84010
(801) 298-1615

PRINTED 15

08-175
LAST

NORTH



SCALE
1" = 100'

SUBDIVISION PINECREST SUBD.
CITY FARMINGTON LOTS 1 TO 1
DAVIS COUNTY GEOGRAPHIC INFORMATION DIVISION

SE SECTION 12 T 3N R 1W
Salt Lake Meridian
Davis County, Utah