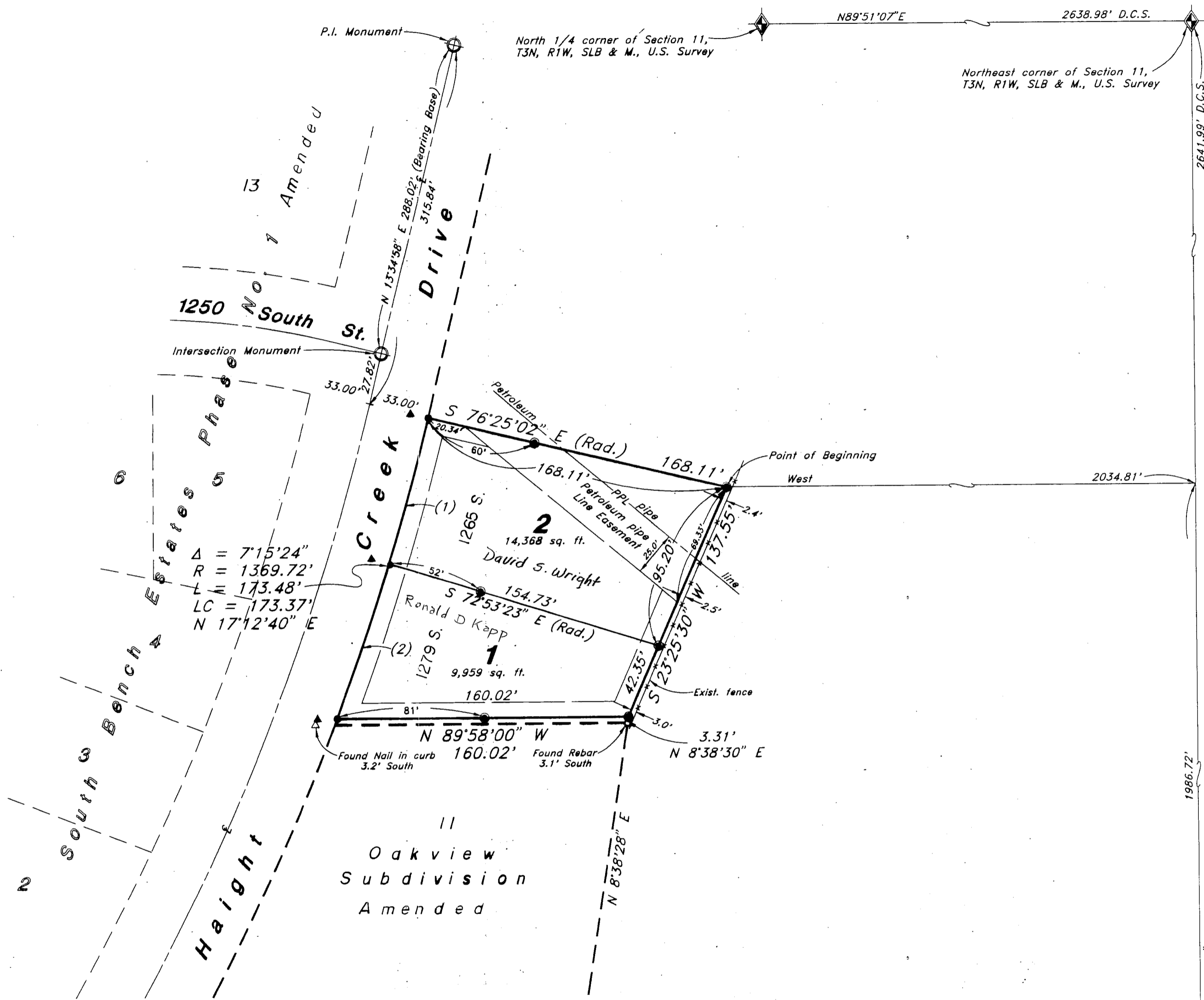


# EDGE END HOLLOW SUBDIVISION NO. 1

A part of the Northeast 1/4 of Section 11, T3N, R1W, SLB & M, U.S. Survey  
Kaysville City, Davis County, Utah

173

08



**Narrative:**

This survey and subdivision plat was requested by Mr. Clyde Rigby for the purpose of platting two residential lots.

Brass cap monuments were found at the intersection of Haight Creek Drive & 1250 South Street and at the P.I. to the North of the Intersection.

A line bearing N 13°34'58" W between these two monuments was used as the Basis of bearings.

Lot corners were monumented as depicted on this plat.

PREPARED BY:  
**GREAT BASIN ENGINEERING, INC.**  
CONSULTING ENGINEERS & SURVEYORS  
OGDEN & SALT LAKE CITY, UTAH

Note:  
● Set Rebar, cap & fence post  
● Set Rebar, cap & lath  
▲ Set 'O' mark nail in top back of curb

08-173

NORTH



SCALE  
1" = 50'

SUBDIVISION EDGE END HOLLOW NO 1  
CITY KAYSVILLE LOTS 1 TO 2  
DAVIS COUNTY GEOGRAPHIC INFORMATION DIVISION

NE SECTION 11 T3N R 1W  
Salt Lake Meridian  
Davis County, Utah

R-7-29-94