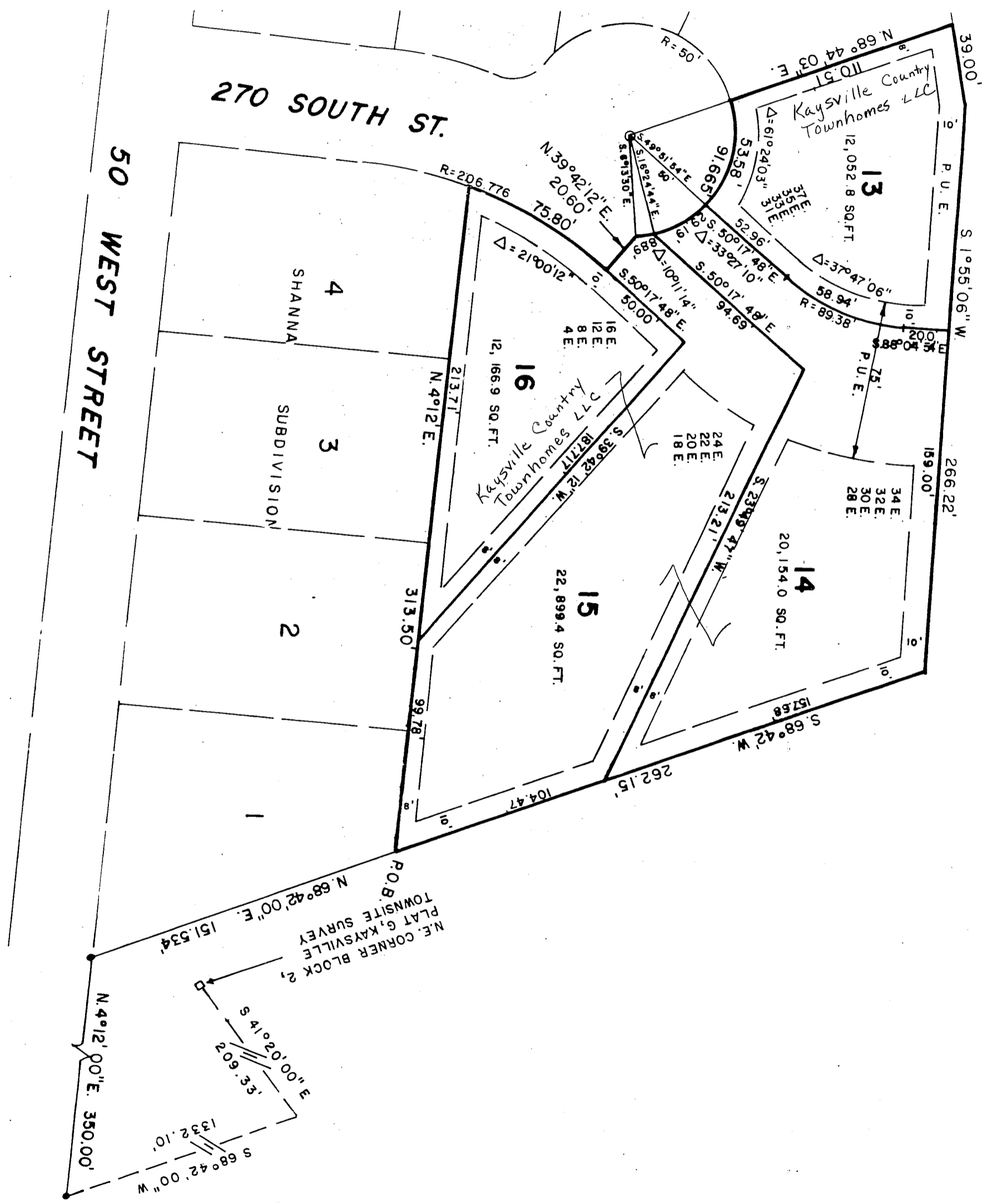


SHANNA SUBDIVISION NO. 2

A SUBDIVISION OF PART OF BLOCK 17 & 18, PLAT G KAYSVILLE TOWNSITE SURVEY, LOCATE IN THE NW1/4 OF THE NE1/4 SECTION 3, T.3 N., R.1 W., AND IN THE SW1/4 OF THE SE1/4 SECTION 34, T.4 N., R.1 W., S.L.B & M., U.S. SURVEY KAYSVILLE CITY, DAVIS COUNTY, UTAH

PRELIM
08-168
LAST
NORTH
SCALE
1" = 50'



N.W. COR.
LOT 117, HAPPY HOMES NO. 5 SUB.

SUBDIVISION SHANNA NO. 2
CITY KAYSVILLE
DAVIS COUNTY GEOGRAPHIC INFORMATION DIVISION
LOTS 13 TO 16

BLK 17 & 18 PLAT G KTS

NE/SE SECTION 3/34 T 3N 4NR 1W
Salt Lake Meridian
Davis County, Utah

891

07