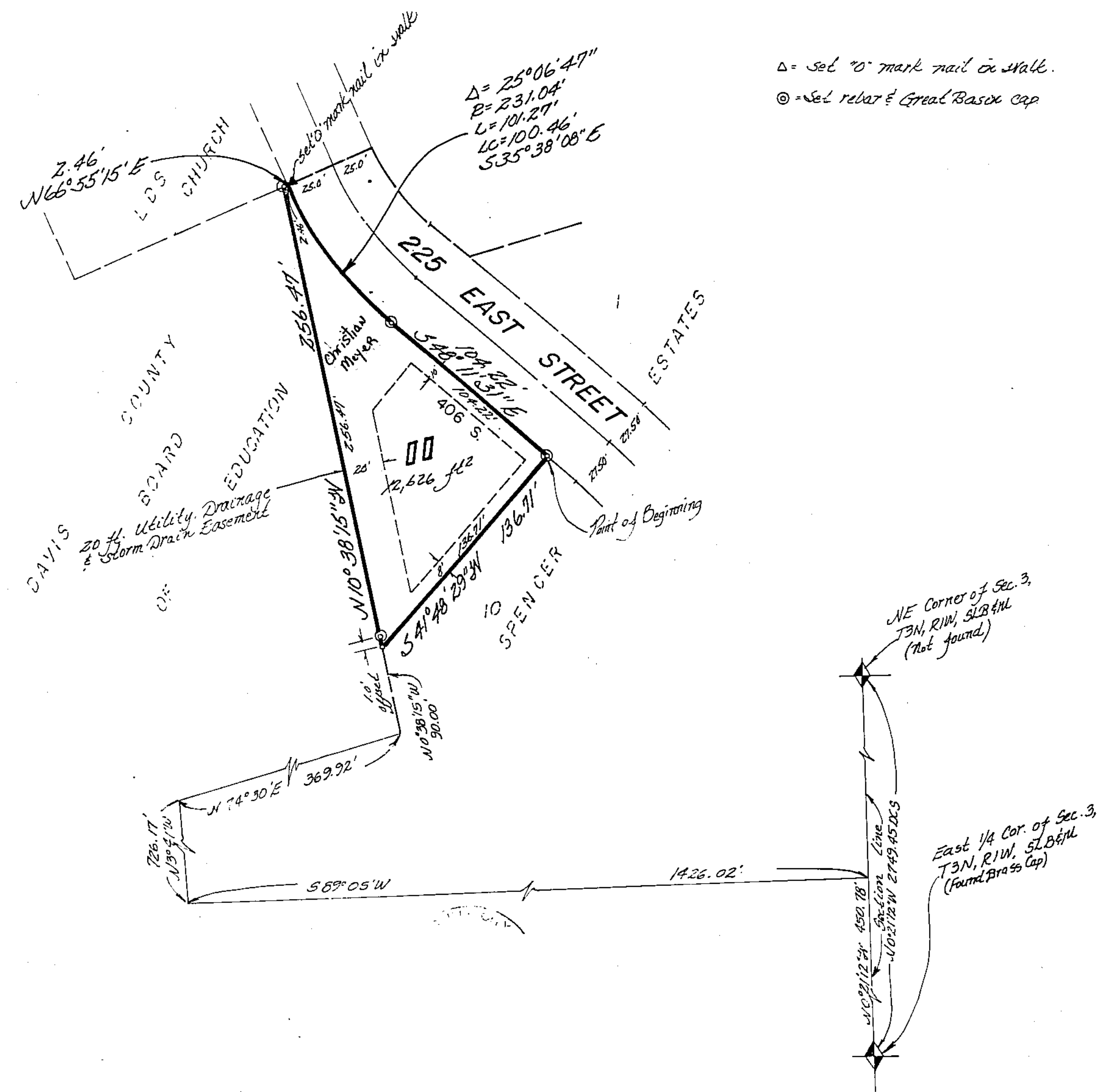


SPENCER ESTATES NO. 2

A PART OF THE NE 1/4 OF SECTION 3, T3N, R1W, SLB&M, U.S. SURVEY
 KAYSVILLE CITY, DAVIS COUNTY, UTAH
 INCLUDING ALL OF LOT 11 SPENCER ESTATES
 DECEMBER 1992



Δ = set 10" mark nail in walk.
 \odot = set rebar & Great Basin cap

PREFIX
 08-161
 LAST=
 NORTH
 SCALE
 1" = 50'

SUBDIVISION SPENCER ESTATES NO. 2 LOTS 11 TO -
 CITY KAYSVILLE
 DAVIS COUNTY GEO-GRAPHIC INFORMATION DIVISION

NE 1/4 SECTION 3 T3N R1W
 Salt Lake Meridian
 Davis County, Utah
 20-8-93

161

08