

# OAKRIDGE HIGHLANDS NO. 5

## KAYSVILLE

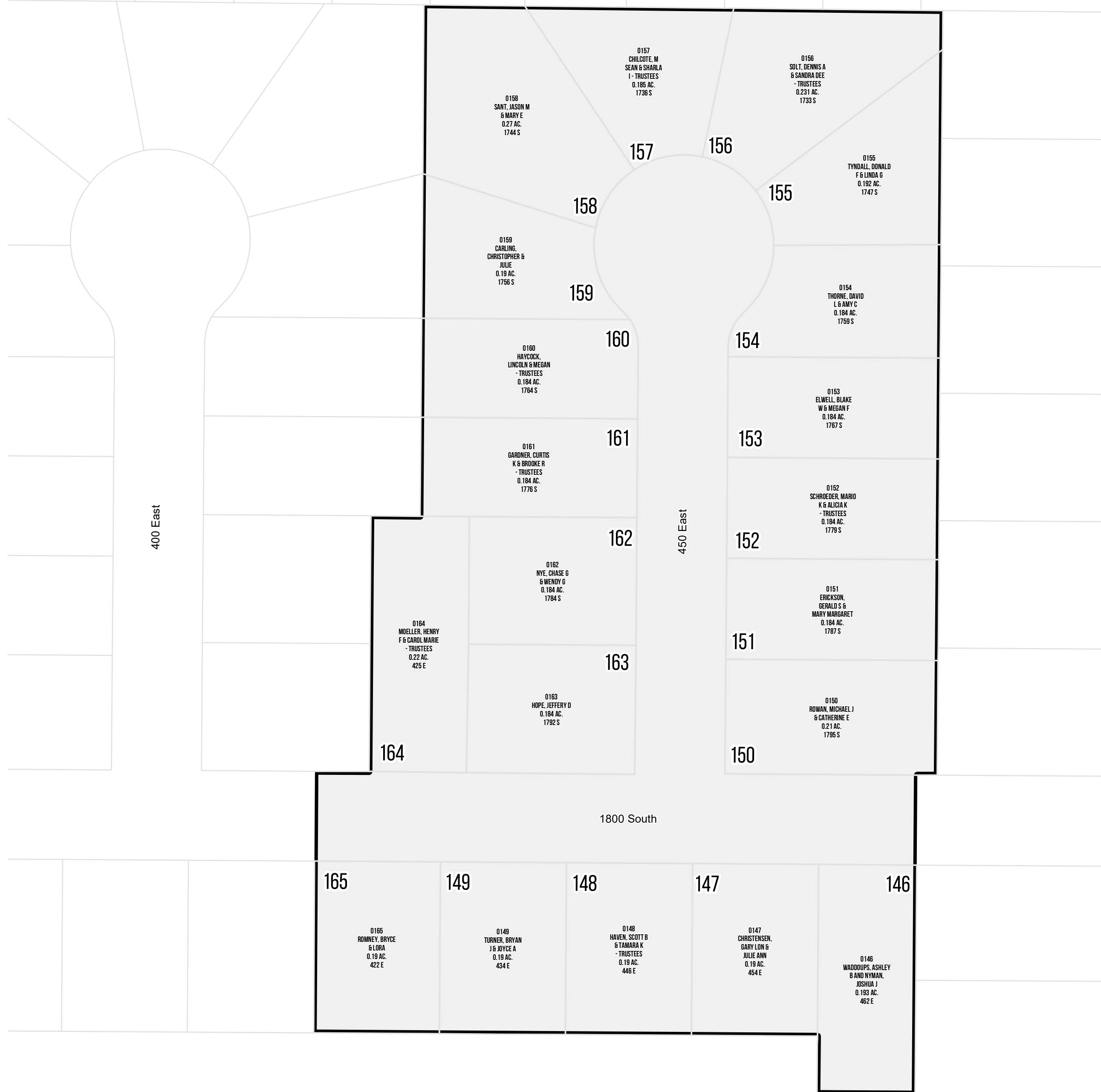
Tax ID Prefix

### 08-145

Plat ID: 2069

Sheet 1 of 1

Year Recorded: 1992



400 East

450 East

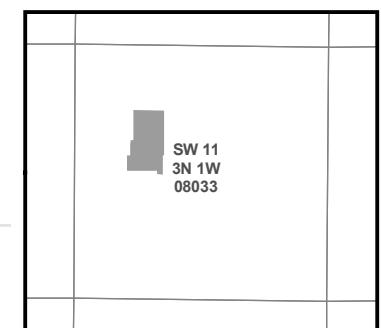
500 East

1800 South

Silverwood Drive 1825 W



1 inch = 50 feet



S L B & M

NOTE: Distance, bearings and radius values are approximate. User needs to refer to the recorded legal descriptions for exact bearing and distances. For cadastral or technical information, see the dedicated plat and or legal descriptions in recorded documents.

