

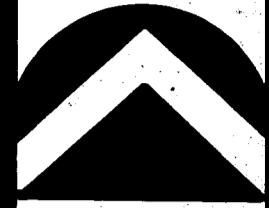
CAMERON ESTATES PLAT "F"

A PART OF SECTION 3, T. 3 N., R. 1 W., S. L. M.
KAYSVILLE CITY, DAVIS COUNTY, UTAH

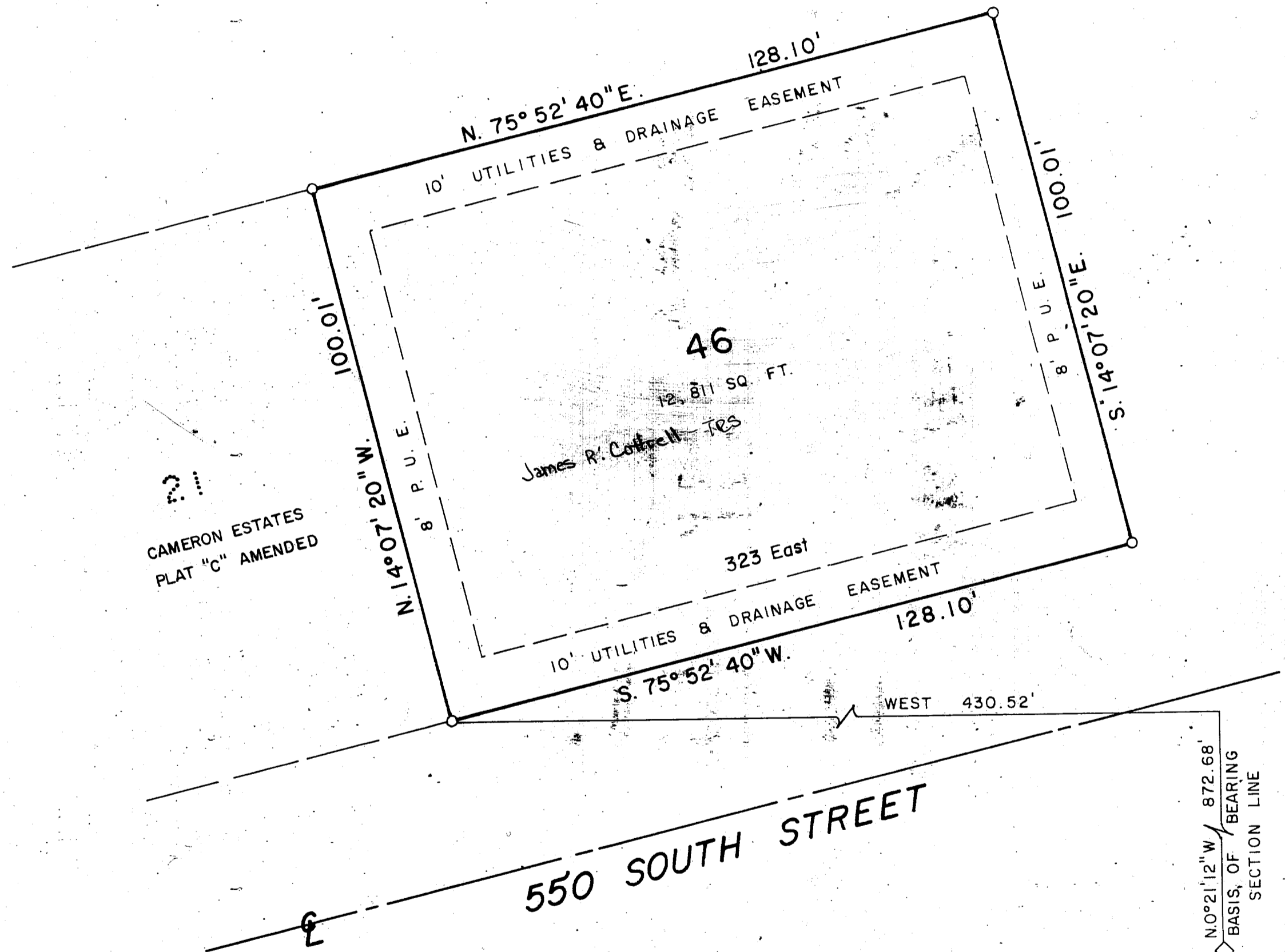
PREFIX

08-144
LAST#

NORTH



SCALE
1" = 20'



21
CAMERON ESTATES
PLAT "C" AMENDED

550 SOUTH STREET

EAST 1/4 COR. SEC. 3, T. 3 N., R. 1 W., S. L. M.
N 0° 21' 12\"/>

SUBDIVISION CAMERON ESTATES PLAT F

CITY KAYSVILLE

LOTS 46 TO

DAVIS COUNTY GEO-GRAPHIC INFORMATION DIVISION

NE 1/4 SECTION 3 T 3N R 1W
Salt Lake Meridian
Davis County, Utah

144

08