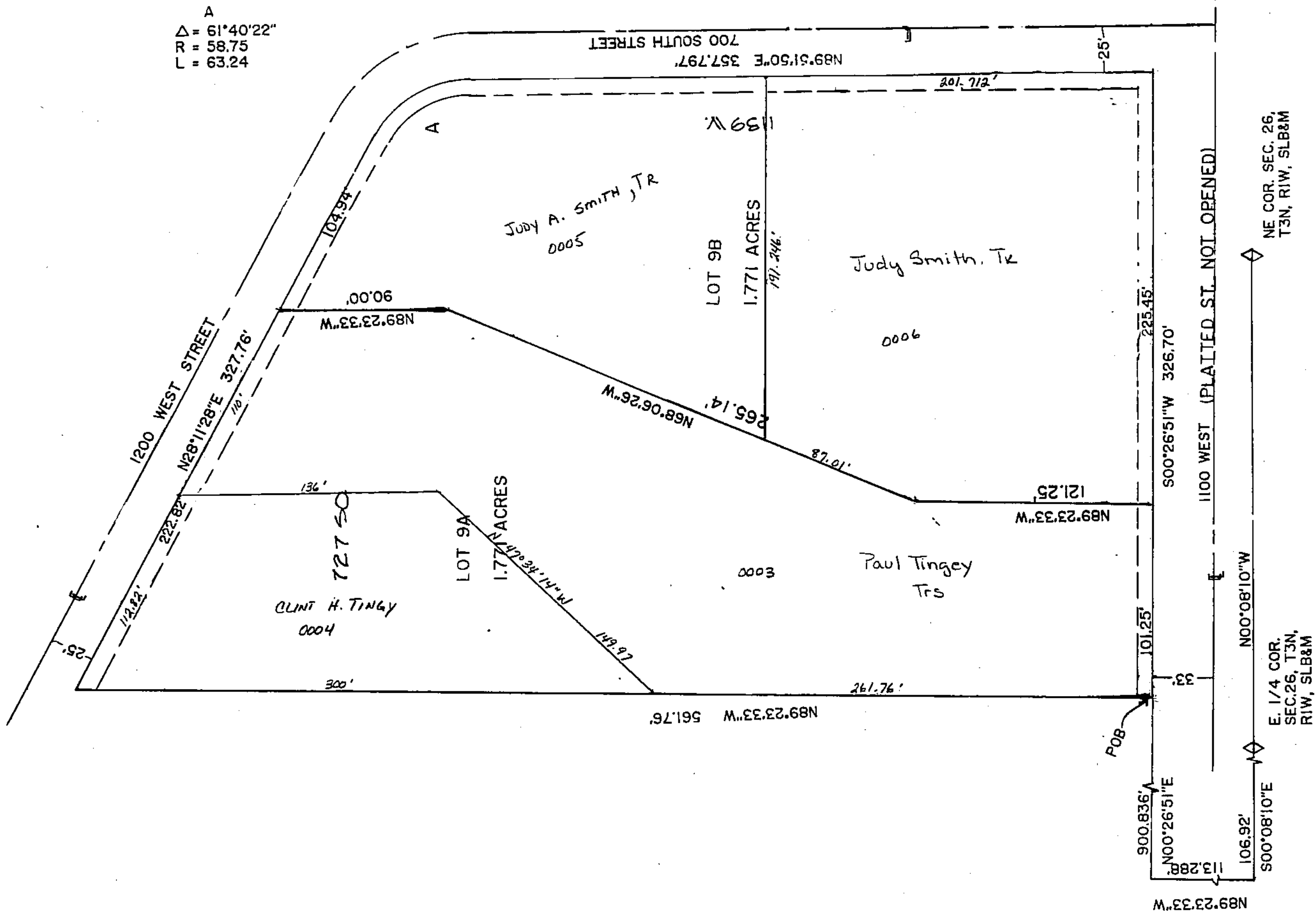


138

08

AMMENDED THE NORTH PORTION OF
 PARCEL 9, KNIGHTON SUBDIVISION
 A SUBDIVISION OF PART OF SECTION 26, TOWNSHIP
 3 NORTH, RANGE 1 WEST, SALT LAKE BASE &
 MERIDIAN, DAVIS COUNTY, UTAH
 SCALE 1" = 50'



PREFIX
 08-138
 LAST=
 0006
 NORTH
 SCALE
 1" = 50'

SUBDIVISION AMMENDED NORTH PORTION OF PARCEL 9, KNIGHTON
 CITY DAVIS COUNTY LOTS 9A TO 9B
 DAVIS COUNTY GEO-GRAPHIC INFORMATION DIVISION

NE 1/4 SECTION 26 T3N R1W
 Salt Lake Meridian
 Davis County, Utah