

KINGSVIEW ESTATES

KAYSVILLE

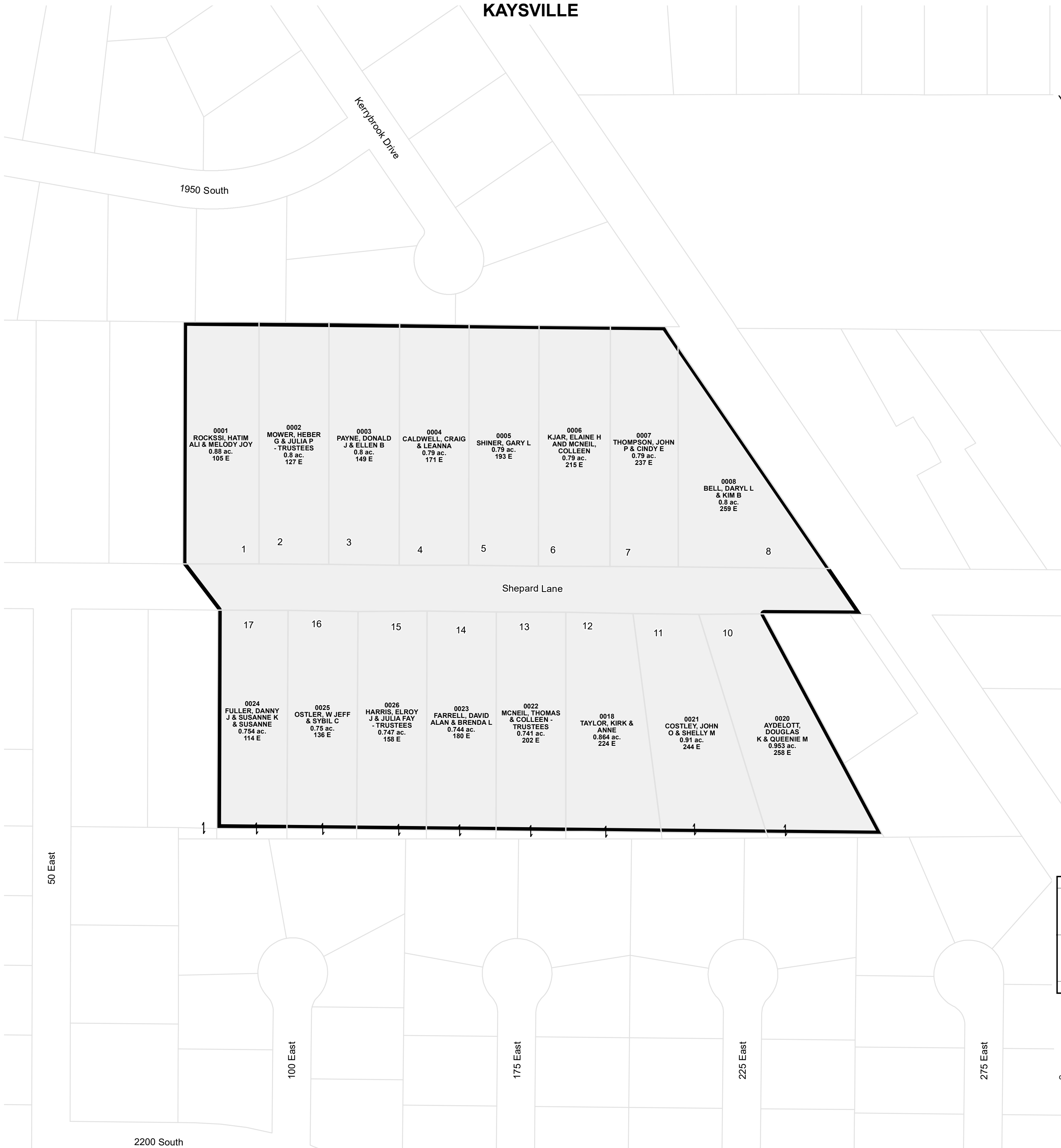
Tax ID Prefix

08-132

Plat ID: 1935

Sheet 1 of 1

Year Recorded: 1990



0001
ROCKSSI, HATIM
ALI & MELODY JOY
0.88 ac.
105 E

0002
MOWER, HEBER
G & JULIA P
- TRUSTEES
0.8 ac.
127 E

0003
PAYNE, DONALD
J & ELLEN B
0.8 ac.
149 E

0004
CALDWELL, CRAIG
& LEANNA
0.79 ac.
171 E

0005
SHINER, GARY L
0.79 ac.
193 E

0006
KJAR, ELAINE H
AND MCNEIL,
COLLEEN
0.79 ac.
215 E

0007
THOMPSON, JOHN
P & CINDY E
0.79 ac.
237 E

0008
BELL, DARYL L
& KIM B
0.8 ac.
259 E

1

2

3

4

5

6

7

8

Shepard Lane

17

16

15

14

13

12

11

10

0024
FULLER, DANNY
J & SUSANNE K
& SUSANNE
0.754 ac.
114 E

0025
OSTLER, W JEFF
& SYBIL C
0.75 ac.
136 E

0026
HARRIS, ELROY
J & JULIA FAY
- TRUSTEES
0.747 ac.
158 E

0023
FARRELL, DAVID
ALAN & BRENDA L
0.744 ac.
180 E

0022
MCNEIL, THOMAS
& COLLEEN -
TRUSTEES
0.741 ac.
202 E

0018
TAYLOR, KIRK &
ANNE
0.864 ac.
224 E

0021
COSTLEY, JOHN
O & SHELLEY M
0.91 ac.
244 E

0020
AYDELOTT,
DOUGLAS
K & QUEENIE M
0.953 ac.
258 E



1 inch = 100 feet

SW 10 3N 1W 08027	SE 10 3N 1W 08028	SW 11 3N 1W 08033
NW 15 3N 1W 08064	NE 15 3N 1W 08065	NW 14 3N 1W 08057

SLB & M

NOTE: Distance, bearings and radius values are approximate. User needs to refer to the recorded legal descriptions for exact bearing and distances. For cadastral or technical information, see the dedicated plat and or legal descriptions in recorded documents.

