

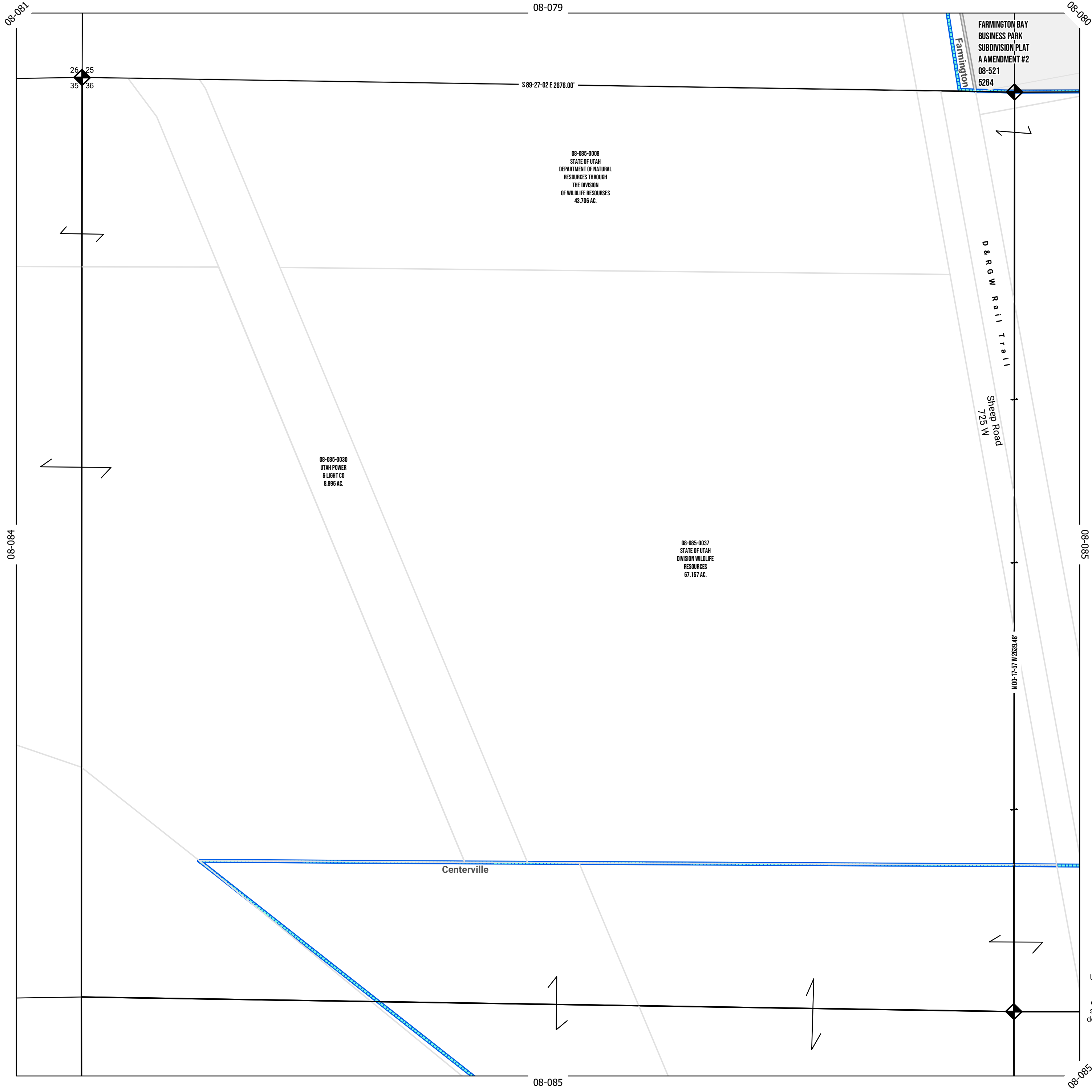
NW Quarter  
Section 36  
3N 1W

SLB & M

Tax ID Prefix

08 - 085

Sheet 1 of 4



FARMINGTON BAY  
BUSINESS PARK  
SUBDIVISION PLAT  
A AMENDMENT #2  
08-521  
5264

08-085-0008  
STATE OF UTAH  
DEPARTMENT OF NATURAL  
RESOURCES THROUGH  
THE DIVISION  
OF WILDLIFE RESOURCES  
43.706 AC.

08-085-0030  
UTAH POWER  
& LIGHT CO  
8.896 AC.

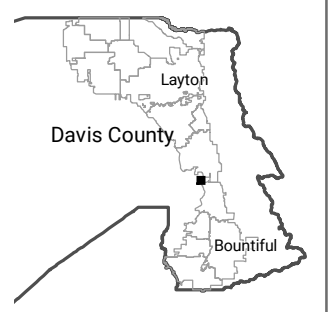
08-085-0037  
STATE OF UTAH  
DIVISION WILDLIFE  
RESOURCES  
67.157 AC.

D & R G W Rail Trail  
Sheep Road  
725 W

Centerville



1 inch = 200 feet



NOTE: Distance, bearings and radius values are approximate. User needs to refer to the recorded legal descriptions for exact bearing and distances. For cadastral or technical information see the dedicated plat and/or legal descriptions in recorded documents.



Last update: 4/16/2021

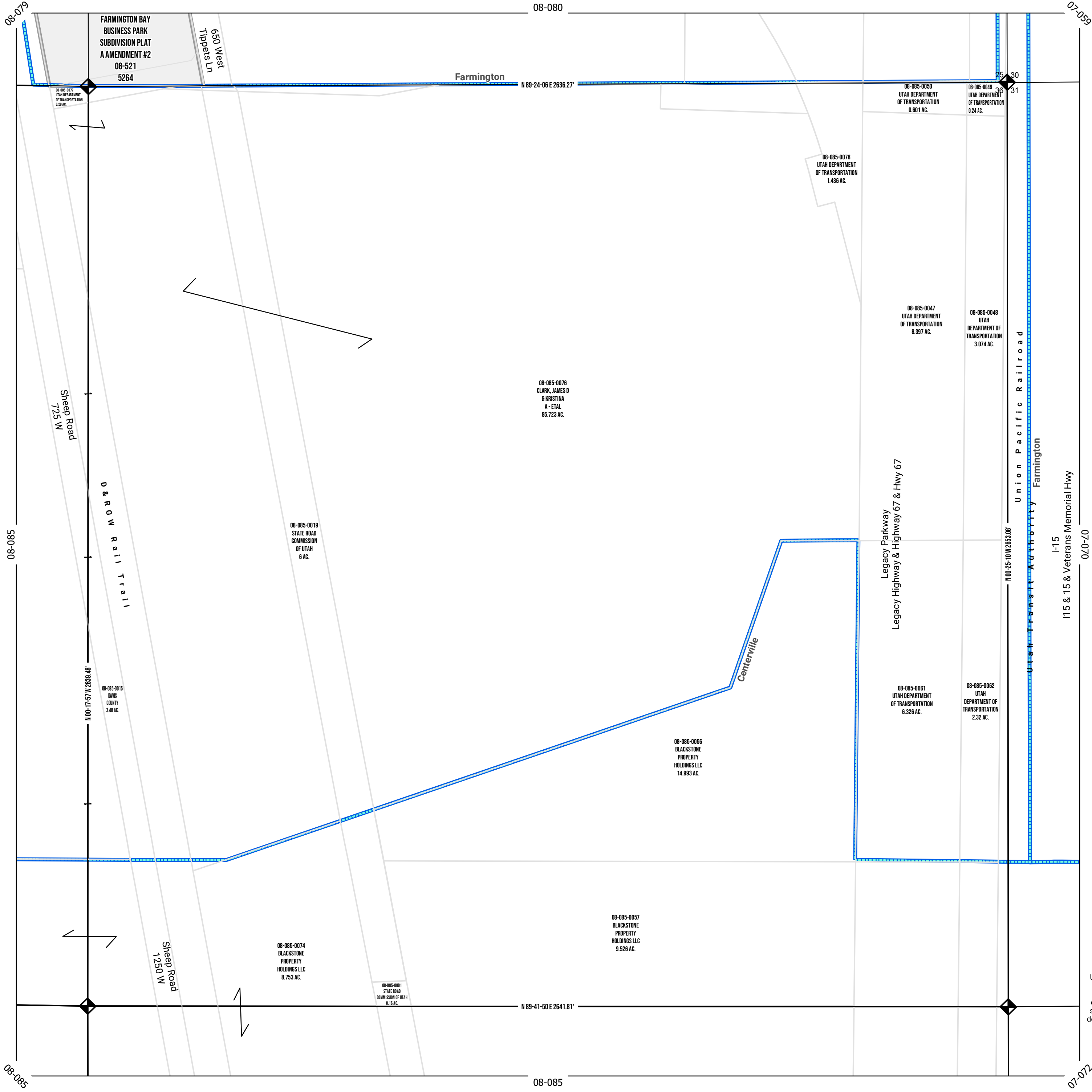
NE Quarter  
Section 36  
3N 1W

SLB & M

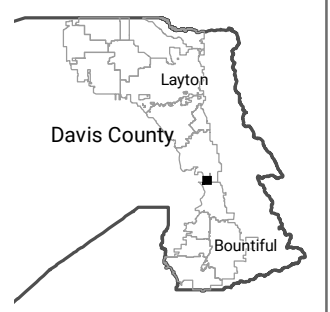
Tax ID Prefix

08 - 085

Sheet 2 of 4



1 inch = 200 feet



NOTE: Distance, bearings and radius values are approximate. User needs to refer to the recorded legal descriptions for exact bearing and distances. For cadastral or technical information see the dedicated plat and/or legal descriptions in recorded documents.



Last update: 4/16/2021

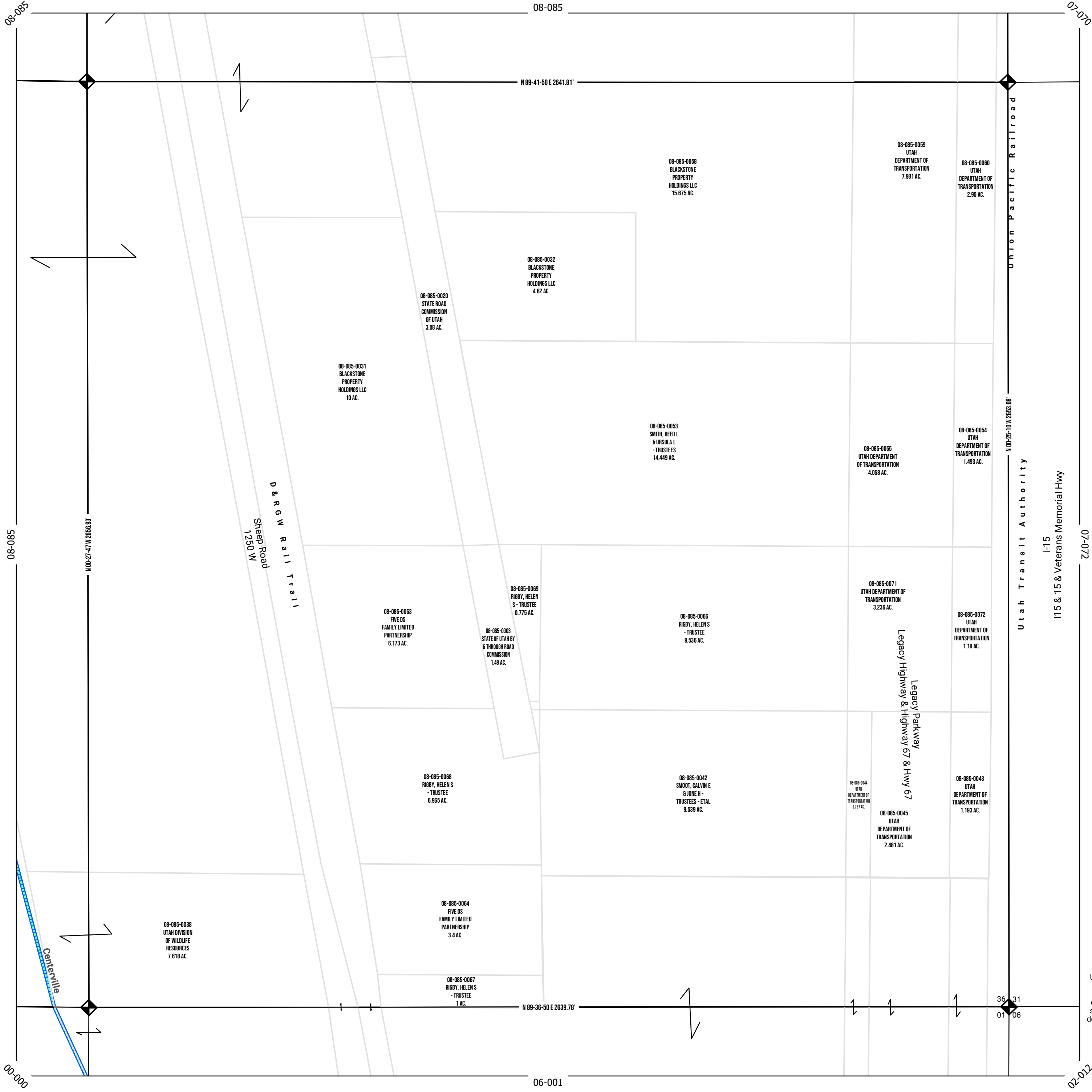
SE Quarter  
Section 36  
3N 1W

SLB & M

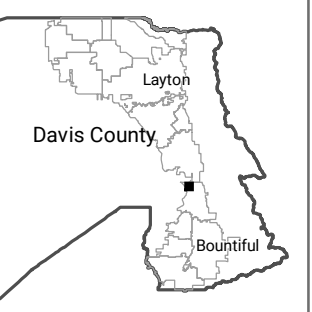
Tax ID Prefix

08 - 085

Sheet 3 of 4



1 inch = 200 feet



NOTE: Distance, bearings and radius values are approximate. User needs to refer to the recorded legal descriptions for exact bearing and distances. For cadastral or technical information see the dedicated plat and/or legal descriptions in recorded documents.



Last update: 4/16/2021

SW Quarter

Section 36

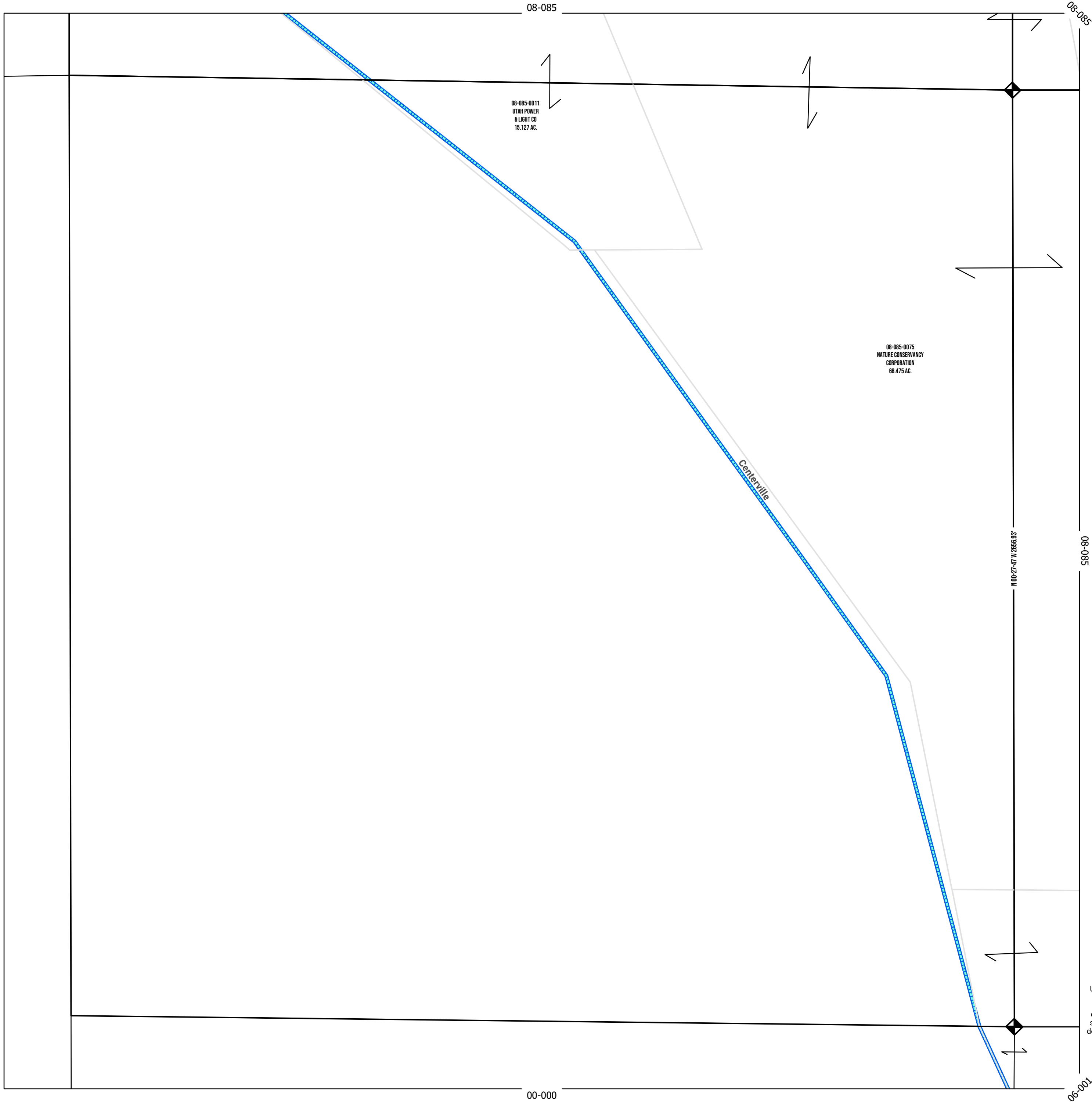
3N 1W

SLB & M

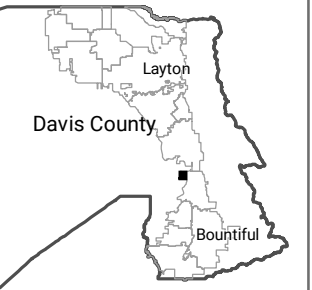
Tax ID Prefix

08 - 085

Sheet 4 of 4



1 inch = 200 feet



NOTE: Distance, bearings and radius values are approximate. User needs to refer to the recorded legal descriptions for exact bearing and distances. For cadastral or technical information see the dedicated plat and/or legal descriptions in recorded documents.



Last update: 4/16/2021