

CAMERON ESTATES PLAT A

KAYSVILLE

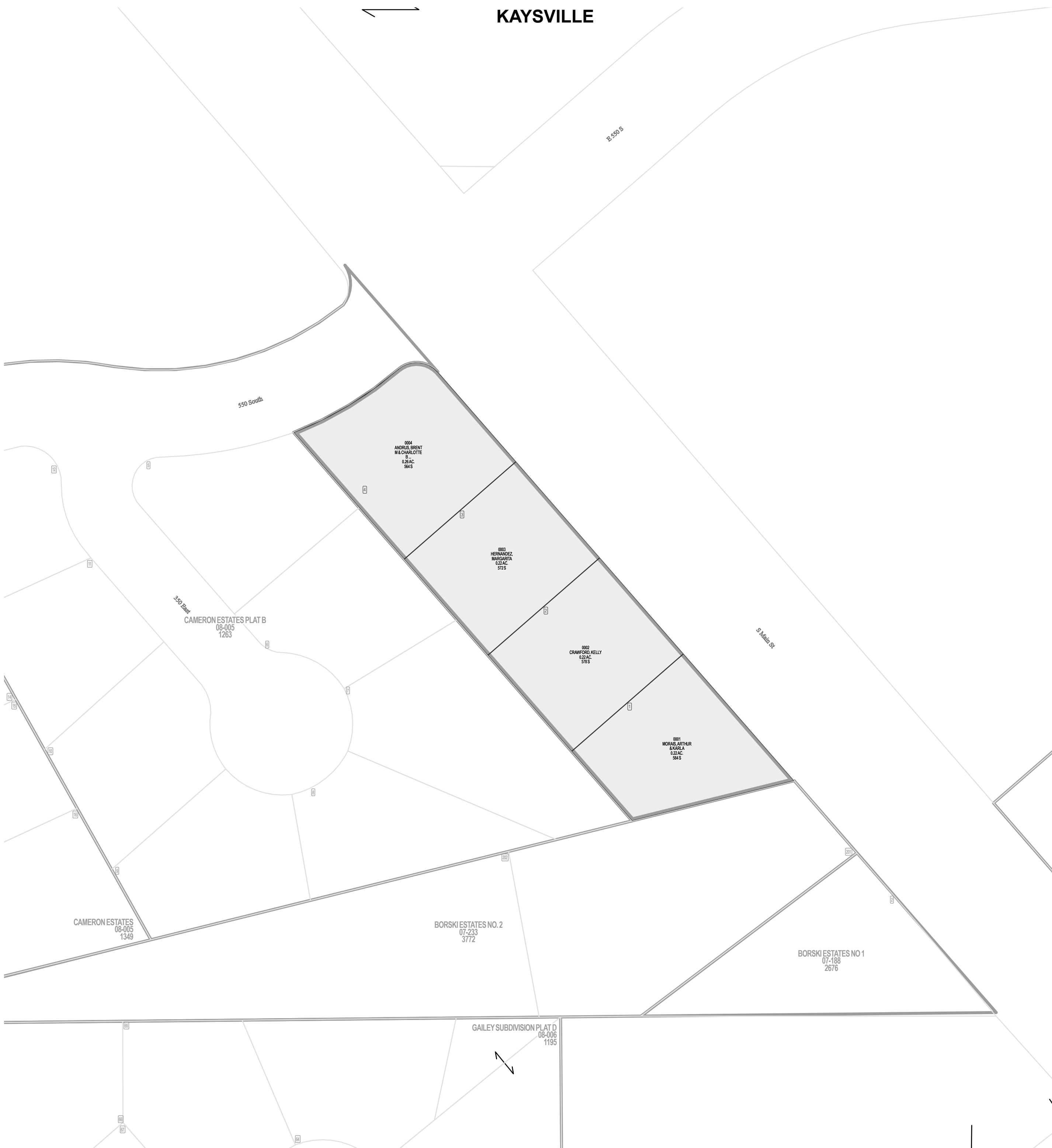
Tax ID Prefix

08-005

Plat ID: 1227

Sheet 1 of 3

Year Recorded: 1978



Parcel ID

Lot Number

1 inch = 50 feet

SE 34 4N 1W 11-104	SW 35 4N 1W 11-115
NE 03 3N 1W 08-002	NW 02 3N 1W 07-094
SE 03 3N 1W 08-004	SW 02 3N 1W 07-096

SLB & M

NOTE: Distance, bearings and radius values are approximate. User needs to refer to the recorded legal descriptions for exact bearing and distances. For cadastral or technical information, see the dedicated plat and or legal descriptions in recorded documents.



CAMERON ESTATES PLAT B

KAYSVILLE

Tax ID Prefix

08-005

Plat ID: 1263

Sheet 2 of 3

Year Recorded: 1979



Parcel ID

Lot Number

1 inch = 50 feet

SE 34 4N 1W 11-104	SW 35 4N 1W 11-115
NE 03 3N 1W 08-002	NW 02 3N 1W 07-094
SE 03 3N 1W 08-004	SW 02 3N 1W 07-096

SLB & M

NOTE: Distance, bearings and radius values are approximate. User needs to refer to the recorded legal descriptions for exact bearing and distances. For cadastral or technical information, see the dedicated plat and or legal descriptions in recorded documents.



CAMERON ESTATES KAYSVILLE

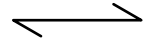
Tax ID Prefix

08-005

Plat ID: 1349

Sheet 3 of 3

Year Recorded: 1983



Parcel ID

Lot Number

1 inch = 60 feet

SE 34 4N 1W 11-104	SW 35 4N 1W 11-115
NE 03 3N 1W 08-002	NW 02 3N 1W 07-094
SE 03 3N 1W 08-004	SW 02 3N 1W 07-096

SLB & M

NOTE: Distance, bearings and radius values are approximate. User needs to refer to the recorded legal descriptions for exact bearing and distances. For cadastral or technical information, see the dedicated plat and or legal descriptions in recorded documents.

