

MOUNTAIN SIDE SUBDIVISION PLAT "F" AMENDED

COMBINING LOTS 313 AND 314 MOUNTAIN SIDE SUBDIVISION PLAT "F"
 LOCATED IN THE NORTHEAST QUARTER OF SECTION 30,
 TOWNSHIP 3 NORTH, RANGE 1 EAST, SALT LAKE BASE AND MERIDIAN
 FARMINGTON CITY, DAVIS COUNTY, UTAH
 JULY 2018

PREFIX

07-332

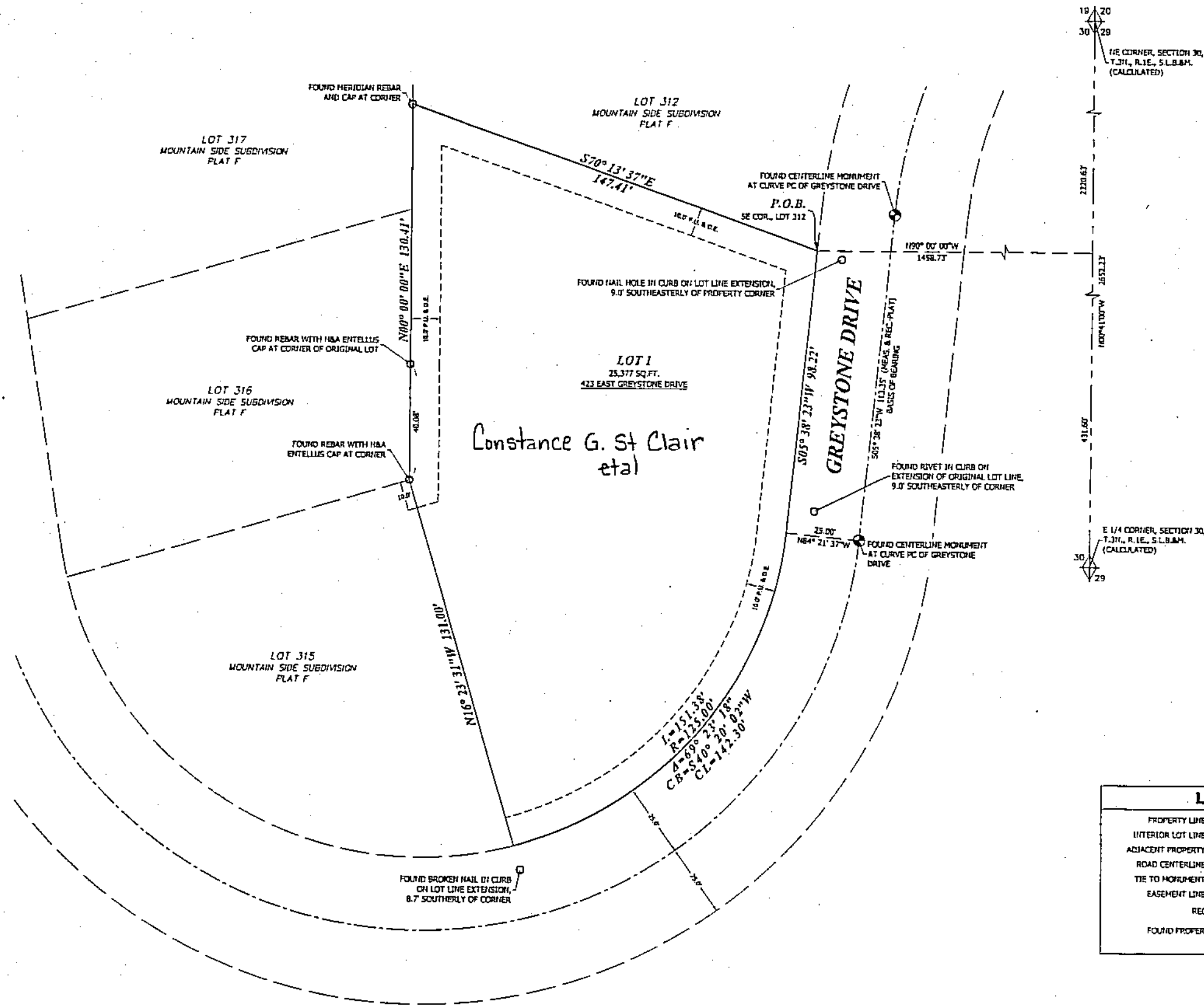
LAST #

0001



SCALE:

1" = 40'




LEGEND	
PROPERTY LINE	—————
INTERIOR LOT LINE	—————
ADJACENT PROPERTY	—————
ROAD CENTERLINE	—————
TIE TO MONUMENT	—————
EASEMENT LINE	—————
RECORD CALLS	()
FOUND PROPERTY MARKER (AS NOTED)	○

07 332

DEVELOPMENT: MOUNTAIN SIDE SUBDIVISION PLAT "F" AMENDED
 CITY: FARMINGTON LOT 1

NE 1/4 OF SEC. 30, T.3N, R.1E,
 S.L.M. DAVIS COUNTY, UTAH
 LOTS 313 & 314
 MOUNTAIN SIDE SUBD.
 PLAT "F"

 181 North 200 West, Suite #4
 Bountiful, UT 84010
 Phone 801.298.2236
 www.Entellus.com
PROPERTY # 000001 07/02/2018 BY 07/12/2018 BY 07/16/2018 BY

FILE #5968
 R-09-14-18