

07 321

LANES END FARM SUBDIVISION PHASE 2 AMENDED

AMENDING LOTS 214R, 215R, AND 216 OF LANES END FARM SUBDIVISION PHASE 2
 LOCATED IN THE NORTHEAST QUARTER OF SECTION 2 TOWNSHIP 3 NORTH, RANGE 1 WEST, SALT LAKE BASE AND MERIDIAN
 FRUIT HEIGHTS CITY, DAVIS COUNTY, UTAH

PREFIX

07-321

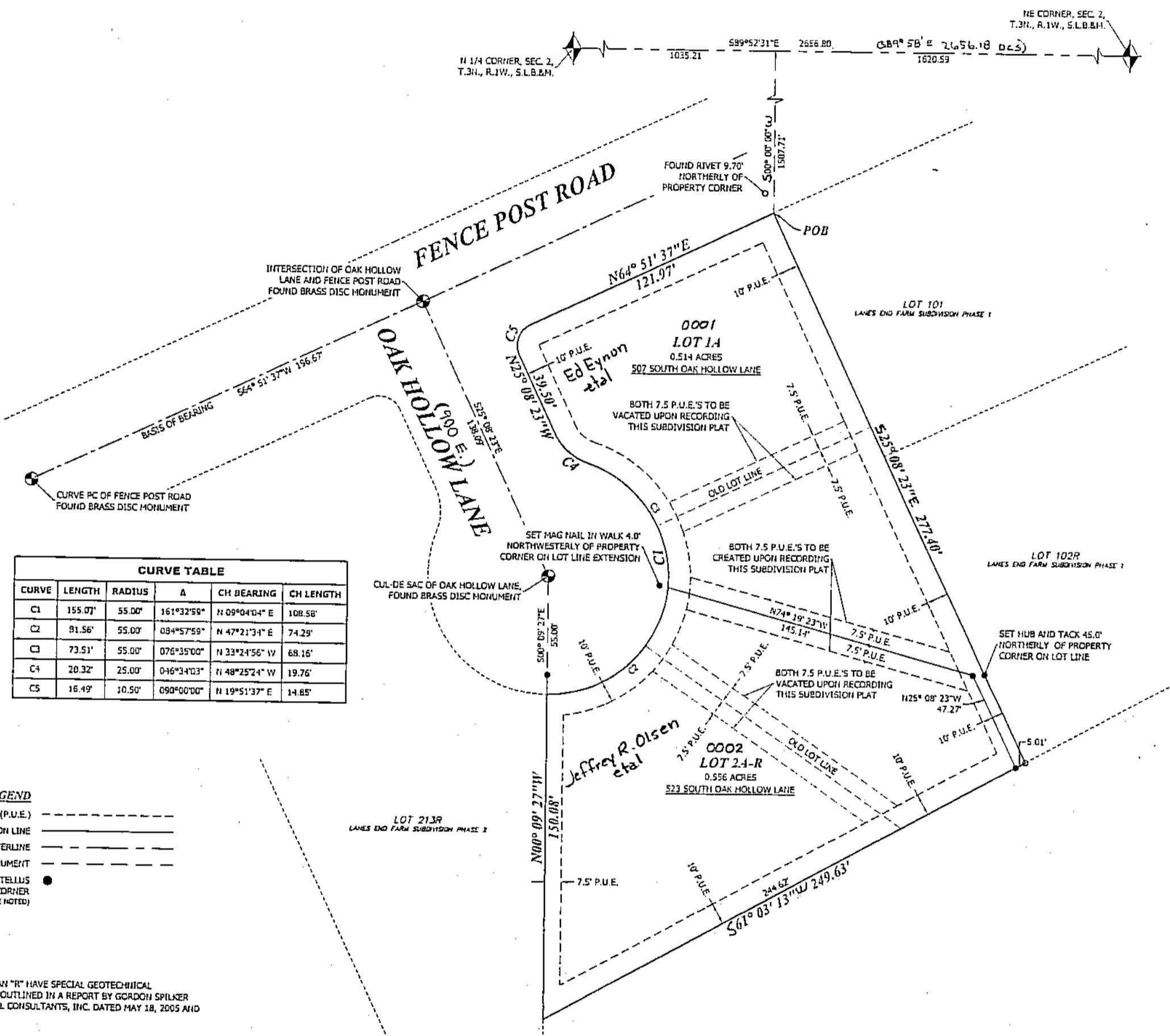
LAST #

002



SCALE:

1" = 50'



CURVE TABLE					
CURVE	LENGTH	RADIUS	A	CH BEARING	CH LENGTH
C1	155.07'	55.00'	161°32'59"	N 09°04'04" E	108.58'
C2	91.56'	55.00'	084°57'59"	N 47°21'31" E	74.29'
C3	73.51'	55.00'	076°35'00"	N 33°24'56" W	68.16'
C4	20.32'	25.00'	046°34'03"	N 48°25'24" W	19.76'
C5	16.49'	10.50'	090°00'00"	N 19°51'37" E	14.85'

LEGEND
 PUBLIC UTILITY EASEMENT (P.U.E.) - Dashed line
 SUBDIVISION LINE - Solid line
 ROAD CENTERLINE - Dashed line
 TIE TO MONUMENT - Dotted line
 SET 5/8" REBAR WITH H&A ENTELLUS CAP, LS #166385, AT CORNER (UNLESS OTHERWISE NOTED) - Circle with dot

NOTE:
 LOTS MARKED WITH AN "R" HAVE SPECIAL GEOTECHNICAL CONSIDERATIONS AS OUTLINED IN A REPORT BY GORDON SPILKER HUBER GEOTECHNICAL CONSULTANTS, INC. DATED MAY 18, 2005 AND MAY 22, 2006.

**DEVELOPMENT: LANES END FARM SUBDIVISION
 PHASE 2 AMENDED
 CITY: FRUIT HEIGHTS LOTS: 1A & 2A-R**

H&A Entellus
 181 North 200 West, Suite #4
 Bountiful, Utah 84010
 Phone 801-298-2236

PROJECT #1354001
 02/22/2017 LP
 03/24/2017 JAC

NE 1/4 OF SEC. 2, T. 3N, R. 1W
 S.L.M. DAVIS COUNTY, UTAH
 AMENDING LOTS 214R, 215R & 216
 LANES END FARM SUBD. PH. 2

FILE #5799
 R-08-15-17