

FARMINGTON EASTRIDGE ESTATES

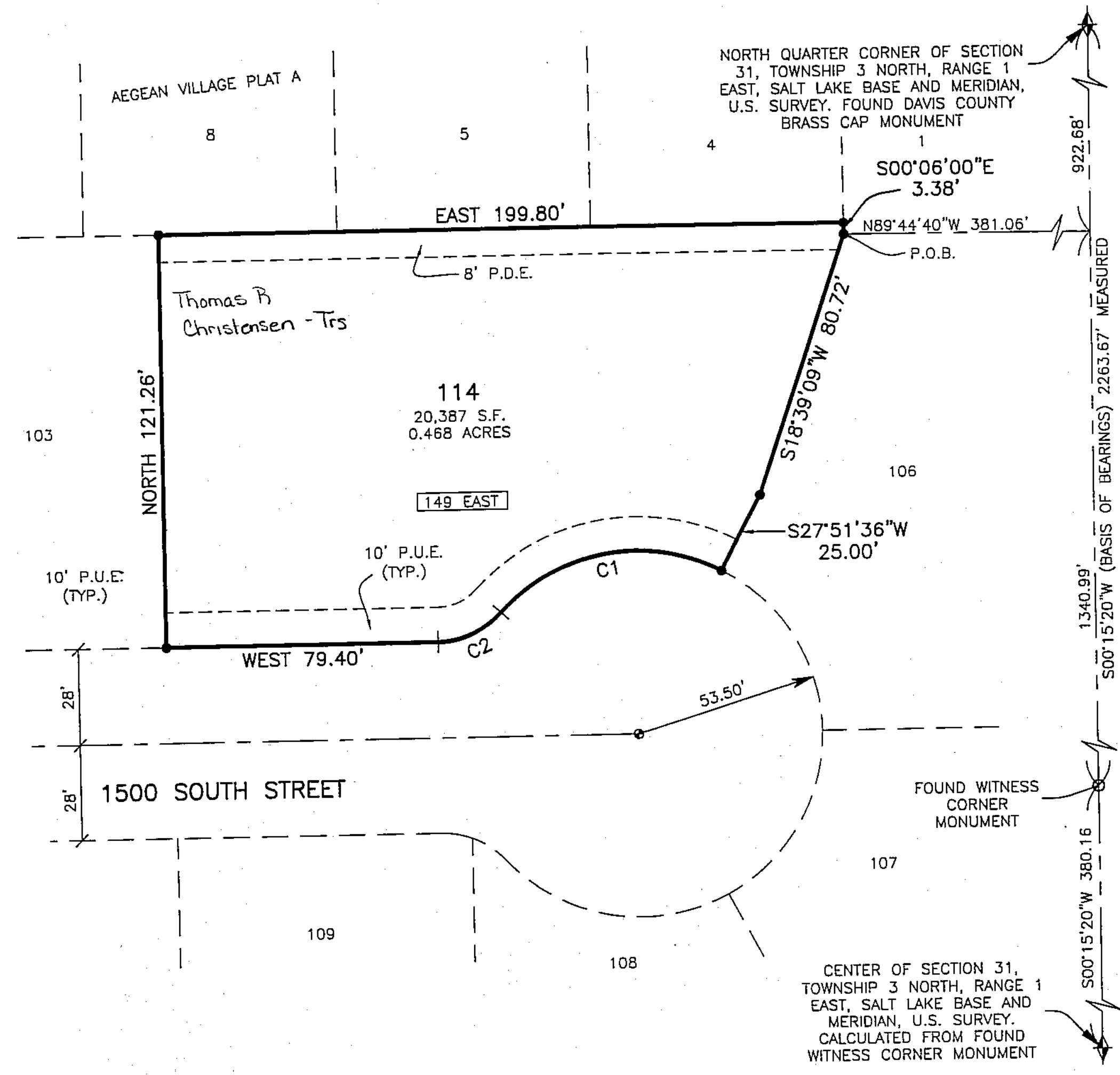
A CONSERVATION SUBDIVISION AMENDED

AMENDING LOTS 104 AND 105 OF FARMINGTON EASTRIDGE ESTATES A CONSERVATION SUBDIVISION
 PART OF THE NORTHWEST QUARTER OF SECTION 31, TOWNSHIP 3 NORTH, RANGE 1 EAST, SALT LAKE BASE AND MERIDIAN, U.S. SURVEY
 FARMINGTON CITY, DAVIS COUNTY, UTAH

PREFIX
 07-316
 LAST #
 0114



SCALE:
 1" = 30'



CURVE TABLE

#	RADIUS	ARC LENGTH	CHD LENGTH	TANGENT	CHD BEARING	DELTA
C1	53.50'	70.40'	65.43'	41.34'	S80°09'48"W	75°23'36"
C2	25.00'	20.74'	20.15'	11.01'	S66°14'00"W	47°32'01"

LEGEND

- = SECTION CORNER
- = FOUND WITNESS MONUMENT
- = FOUND STREET MONUMENT
- = FOUND 5/8" REBAR AND PLASTIC CAP STAMPED "REEVE & ASSOCIATES"
- = FOUND LEAD PLUG
- = P.U.E.
- = BOUNDARY LINE
- = ADJOINING PROPERTY
- = 10' PUBLIC UTILITY EASEMENTS
- = ROAD CENTERLINE/MON. LINE
- = SECTION TIE LINE

SETBACKS

20' FRONT YARD
** 8'-10' SIDE YARD
20' SIDE CORNER YARD
30' REAR YARD
* 15' FRONT YARD

** = 8' MIN W/18' TOTAL SIDE

Reeve & Associates, Inc.
 820 CHANGERS STREET, SUITE 14, OGDEN, UTAH 84403
 TEL: (801) 821-3100 FAX: (801) 821-2886 www.reeve-associates.com
 LAND PLANNERS * CIVIL ENGINEERS * LAND SURVEYORS
 TRAFFIC ENGINEERS * STRUCTURAL ENGINEERS * LANDSCAPE ARCHITECTS

FARMINGTON EASTRIDGE ESTATES
 A CONSERVATION SUBDIVISION AMENDED
 DEVELOPMENT.
 CITY: FARMINGTON LOTS: 114

NW 1/4 SEC. 31, T.3N, R.1E
 S.L.M. DAVIS COUNTY, UTAH
 AMENDING LOTS 104 & 105 OF
 FARMINGTON EASTRIDGE ESTATES
 A CONSERVATION SUBDIVISION

FILE #5688
 R-09-13-16

07 316