

07 308

# Quail Corner Subdivision Phase 2

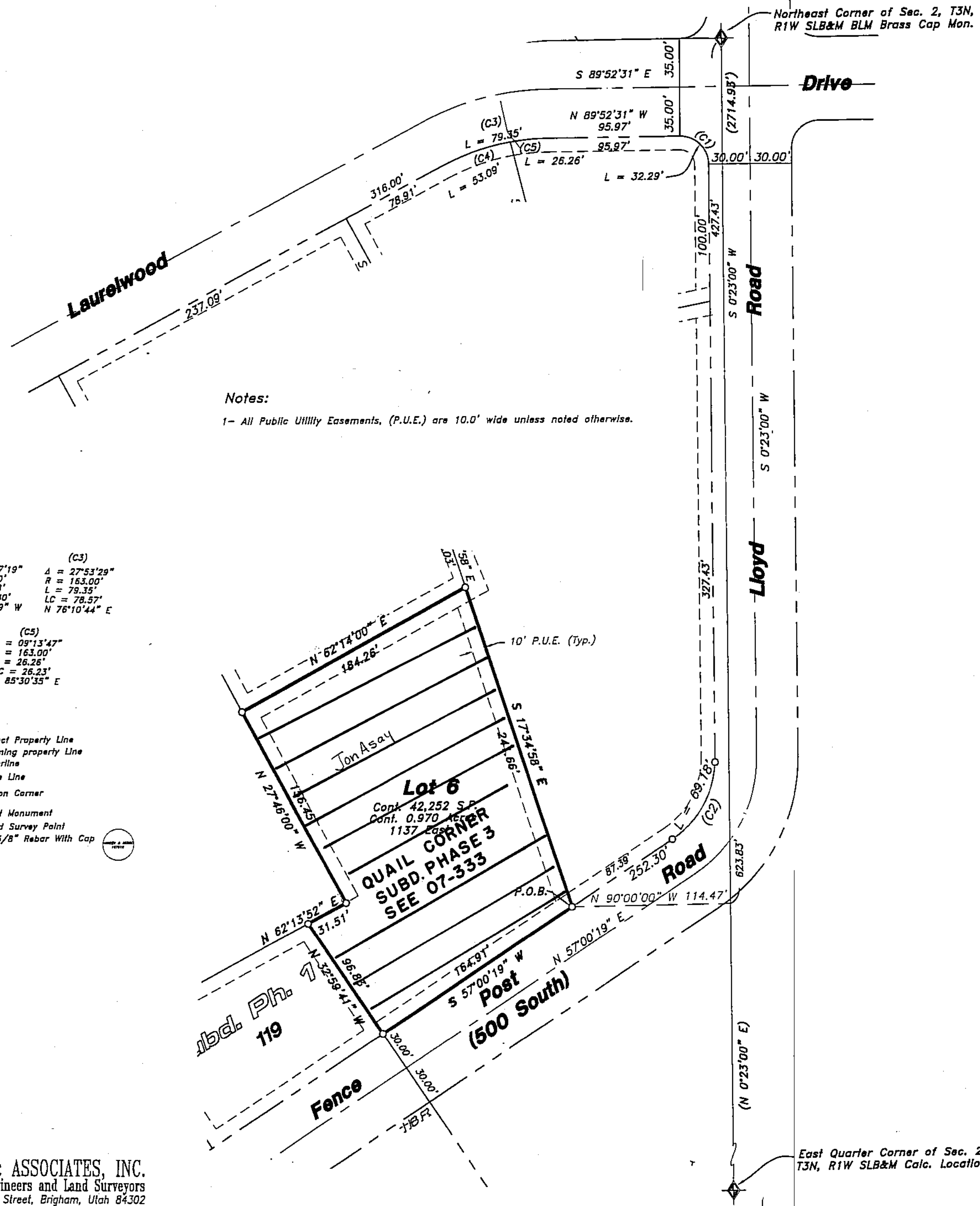
Amending Lot 4, Quail Corner Subdivision and  
 Amending Parcel B, Lanes End Farm Subdivision Ph. 1  
 Fruit Heights, Davis County, Utah  
 A Part of the Northeast Quarter of Section 2,  
 Township 3 North, Range 1 West, Salt Lake Base & Meridian

PREFIX 18  
 07-308  
 LAST #  
 0006



SCALE:  
 1" = 60'

DEVELOPMENT: QUAIL CORNER SUBDIVISION PH. 2  
 CITY: FRUIT HEIGHTS LOTS: 6



Notes:  
 1- All Public Utility Easements, (P.U.E.) are 10.0' wide unless noted otherwise.

(C1) Δ = 90°15'31" R = 20.50' L = 32.29' LC = 29.06' S 44°44'46" E	(C2) Δ = 56°37'19" R = 70.00' L = 69.18' LC = 66.40' S 28°41'39" W	(C3) Δ = 27°53'29" R = 163.00' L = 79.35' LC = 78.57' N 76°10'44" E
(C4) Δ = 18°39'42" R = 163.00' L = 53.09' LC = 52.86' N 71°33'51" E	(C5) Δ = 09°13'47" R = 163.00' L = 26.26' LC = 26.23' N 85°30'35" E	

**LEGEND**

	Subject Property Line
	Adjoining property Line
	Centerline
	Fence Line
	Section Corner
	Street Monument
	Found Survey Point
	Set 5/8" Rebar With Cap



**HANSEN & ASSOCIATES, INC.**  
 Consulting Engineers and Land Surveyors  
 538 North Main Street, Brigham, Utah 84302  
 Visit us at [www.haies.net](http://www.haies.net)  
 Brigham City    Ogden    Logan  
 (435) 723-3491    (801) 399-4905    (435) 752-8272

14-119\_14-119v13.dwg 03/09/15

(BLOCK 1, PLATE 4, KTS)  
 NE 1/4 SEC. 2, T3N, R1W  
 S.L.M. DAVIS COUNTY, UTAH  
 LOT 4, QUAIL CORNER SUBDIVISION  
 PARCEL B, LANES END FARM SUBD. PH. 1

FILE #5549  
 R-07-13-15