

# PARKLAND SUBDIVISION PLAT "A" - FIRST AMENDED

AMENDING LOT 2 PARKLAND SUBDIVISION PLAT A

LOCATED IN THE NORTHWEST QUARTER

OF SECTION 31

TOWNSHIP 3 NORTH RANGE 1 EAST

SALT LAKE BASE & MERIDIAN

FARMINGTON CITY, DAVIS COUNTY, UTAH

PREFIX

07-304

LAST #

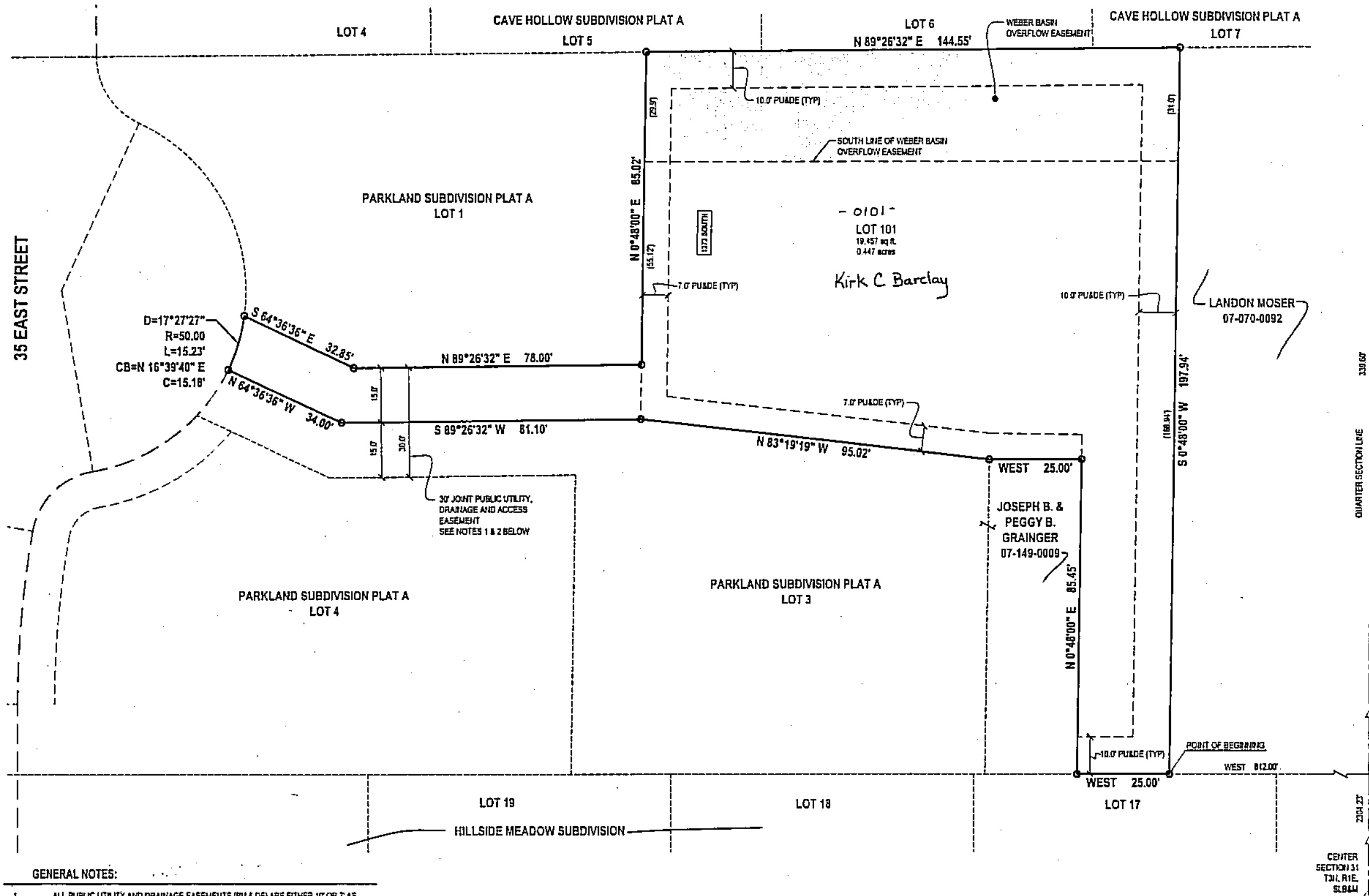
0101



SCALE:

1" = 30'

NOTE:  
UTILITIES SHALL HAVE THE RIGHT TO INSTALL, MAINTAIN, AND OPERATE THEIR EQUIPMENT ABOVE AND BELOW GROUND AND ALL OTHER RELATED FACILITIES WITHIN THE PUBLIC UTILITY EASEMENTS IDENTIFIED ON THIS PLAT MAP AS MAY BE NECESSARY OR DESIRABLE IN PROVIDING UTILITY SERVICES WITHIN AND WITHOUT THE LOTS IDENTIFIED HEREIN, INCLUDING THE RIGHT OF ACCESS TO SUCH FACILITIES AND THE RIGHT TO REQUIRE REMOVAL OF ANY OBSTRUCTIONS INCLUDING STRUCTURES, TREES AND VEGETATION THAT MAY BE PLACED WITHIN THE P.U.E. THE UTILITY MAY REQUIRE THE LOT OWNER TO REMOVE ALL STRUCTURES WITHIN THE P.U.E. AT THE LOT OWNER'S EXPENSE, OR THE UTILITY MAY REMOVE SUCH STRUCTURES AT THE LOT OWNER'S EXPENSE. AT NO TIME MAY ANY PERMANENT STRUCTURES BE PLACED WITHIN THE P.U.E. OR ANY OTHER OBSTRUCTION WHICH INTERFERES WITH THE USE OF THE P.U.E. WITHOUT THE PRIOR WRITTEN APPROVAL OF THE UTILITIES WITH FACILITIES IN THE P.U.E.



GENERAL NOTES:

1. ALL PUBLIC UTILITY AND DRAINAGE EASEMENTS (PU & DE) ARE EITHER 10' OR 7' AS SHOWN. THE STEM OF THE LOT IS ALSO A PUBLIC UTILITY AND DRAINAGE EASEMENT.
2. THE 15 FOOT STEM OF THIS THE LOT (AS WELL AS THE STEM OF LOT 3 PARKLAND SUBDIVISION PLAT A) IS A SHARED PUBLIC UTILITY AND ACCESS EASEMENT WITH LOT 3, PARKLAND SUBDIVISION PLAT A FOR INGRESS, EGRESS AND PUBLIC UTILITIES AND DRAINAGE.

LEGEND

- SECTION CORNER
- PUBLIC UTILITY & DRAINAGE EASEMENT
- EASEMENTS
- SET REBAR AND CAP AT ALL PROPERTY CORNERS

**ENSIGN**

SALT LAKE CITY  
45 W. 10000 S., SUITE 500  
SANDY, UT 84070  
Phone: 801.255.3229  
Fax: 801.255.4442  
WWW.ENSIGN.COM

LAYTON Phone: 801.471.1100  
TODDLE Phone: 326.4433  
CEDAR CITY Phone: 326.4433  
RICHFIELD Phone: 326.4433  
COLUMBIAN SPRINGS Phone: 724.67474

304  
07

DEVELOPMENT: PARKLAND SUBDIVISION PLAT "A" - FIRST AMENDED  
CITY: FARMINGTON LOTS: 101

NW 1/4 SEC. 31, T. 3N, R. 1E  
S.L.M. DAVIS COUNTY, UTAH  
AMENDING LOT 2, PARKLAND  
SUBDIVISION PLAT A

FILE #5525  
R-05-15-15