

# Park Hills Subdivision Phase 3

Being a Part of the South Half of Section 31, T.3N., R.1E., S.L.B. & M.  
Centerville City, Davis County, Utah

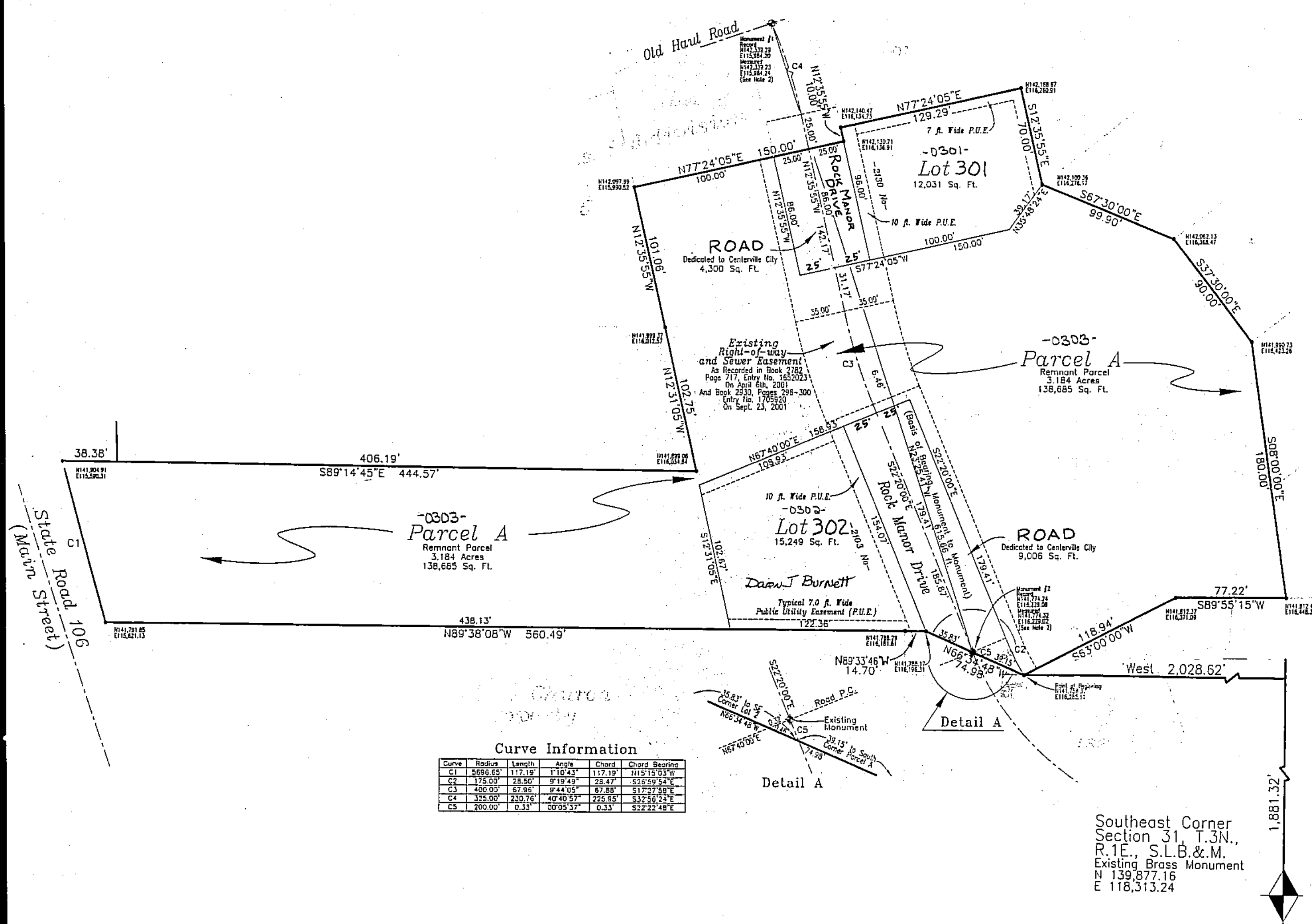
Kia Lyn Fadel Hodgson - et al - Trustees of the Rock Manor Trust  
owns all lots not marked

PREFIX  
07-302  
LAST #



SCALE:  
1" = 60'

07 302



Curve Information

Curve	Radius	Length	Angle	Chord	Chord Bearing
C1	989.63	117.19'	11°04'31"	117.19'	N15°15'03"W
C2	175.00'	28.90'	9°19'49"	28.47'	S29°59'54"E
C3	400.00'	67.86'	8°44'05"	67.88'	S17°27'59"E
C4	325.00'	230.76'	40°40'57"	225.95'	S37°56'24"E
C5	200.00'	0.33'	00°05'37"	0.33'	S22°22'48"E

DEVELOPMENT: PARK HILLS SUBDIVISION PHASE 3  
CITY: CENTERVILLE LOTS: 301 - 302 & PARCELA

**BEER** Balling  
Engineering  
323 East Pages Lane  
P.O. Box 805  
Centerville, Utah 84014  
Phone: (801) 295-7237  
Fax: (801) 299-0419

S 1/2 SEC. 31, T.3N., R.1E  
S.L.M. DAVIS COUNTY, UTAH

FILE #5518  
R-05-07-15