

ORCHARD FARMS CONDOMINIUM

LOCATED IN THE SOUTHWEST QUARTER OF SECTION 2, TOWNSHIP 3 NORTH, RANGE 1 WEST,
SALT LAKE BASE AND MERIDIAN
FRUIT HEIGHTS CITY, DAVIS COUNTY, UTAH

PREFIX

07-282

LAST #
PAGE 1 of 2

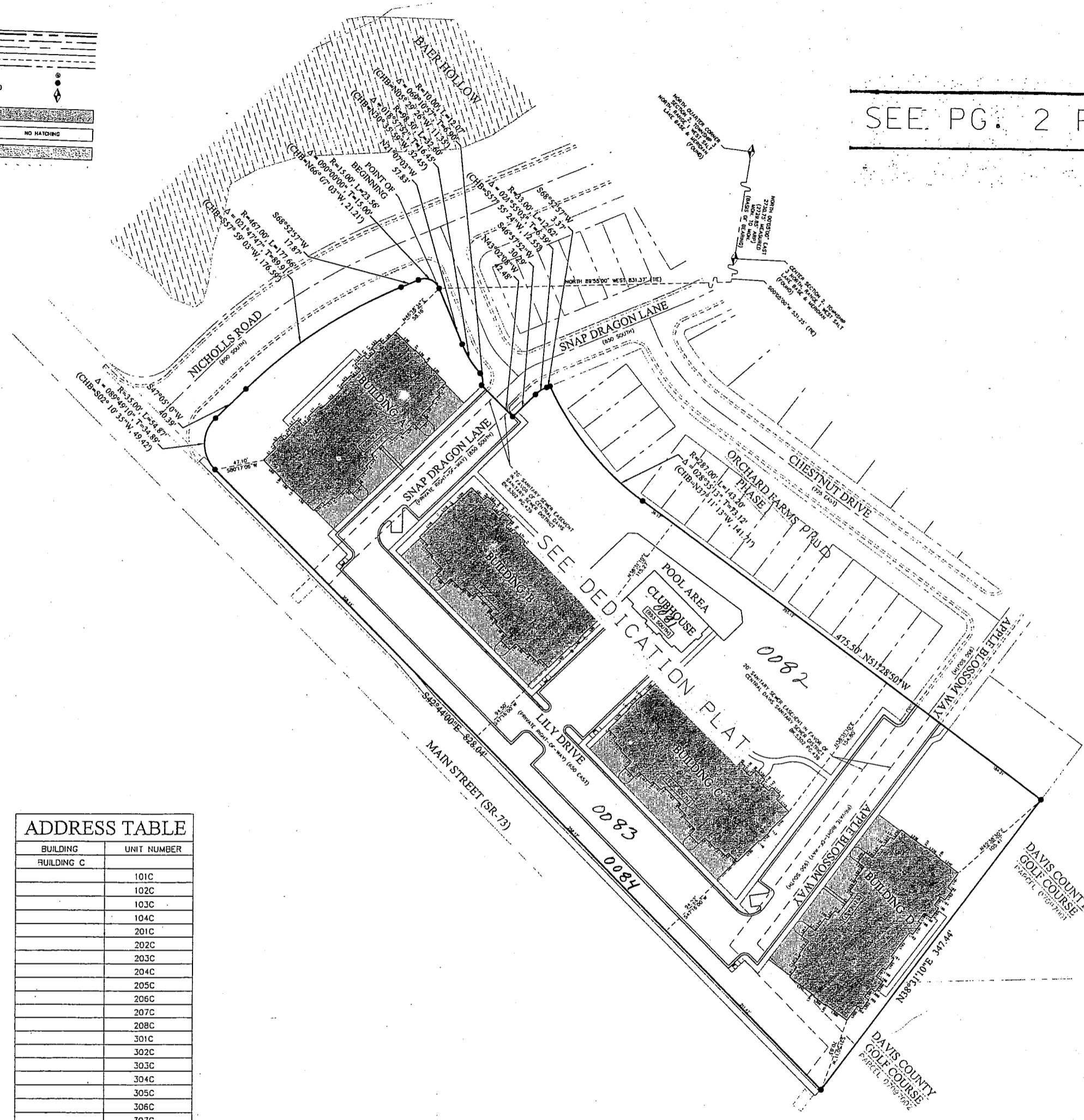


SCALE:
1" = 100'

SEE PG. 2 FOR NAMES

LEGEND

BOUNDARY	(Symbol: Dashed line)
ROW	(Symbol: Solid line)
CENTERLINE	(Symbol: Dashed line with dots)
LOT LINE	(Symbol: Solid line)
EASEMENT	(Symbol: Dashed line)
SECTION LINES	(Symbol: Dashed line)
PROPOSED STREET MONUMENT	(Symbol: Circle with crosshair)
BOUNDARY CORNER	(Symbol: Circle with crosshair)
SECTION MONUMENT	(Symbol: Circle with crosshair)
LIMITED COMMON OWNERSHIP	(Symbol: Stippled pattern)
COMMON OWNERSHIP	(Symbol: No shading)
PRIVATE OWNERSHIP	(Symbol: Cross-hatched pattern)

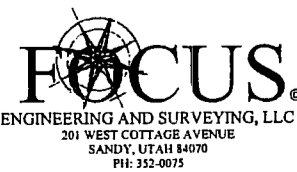


ADDRESS TABLE

BUILDING	UNIT NUMBER
BUILDING A	
	101A
	102A
	103A
	104A
	201A
	202A
	203A
	204A
	205A
	206A
	207A
	208A
	301A
	302A
	303A
	304A
	305A
	306A
	307A
	308A
BUILDING B	
	101B
	102B
	103B
	104B
	201B
	202B
	203B
	204B
	205B
	206B
	207B
	208B
	301B
	302B
	303B
	304B
	305B
	306B
	307B
	308B

ADDRESS TABLE

BUILDING	UNIT NUMBER
BUILDING C	
	101C
	102C
	103C
	104C
	201C
	202C
	203C
	204C
	205C
	206C
	207C
	208C
	301C
	302C
	303C
	304C
	305C
	306C
	307C
	308C
BUILDING D	
	101D
	102D
	103D
	104D
	201D
	202D
	203D
	204D
	205D
	206D
	207D
	208D
	301D
	302D
	303D
	304D
	305D
	306D
	307D
	308D



DEVELOPMENT: ORCHARD FARMS CONDOMINIUM
CITY: FRUIT HEIGHTS
BLDG: A THRU D - 20 UNITS EACH & COMMON AREA

SW 1/4 OF SEC. 2, T 3N R 1W
S.L.M. DAVIS COUNTY, UTAH

FILE #5153
R-05-29-12

07 282 1 of 2

