

OxFord Estates Subdivision

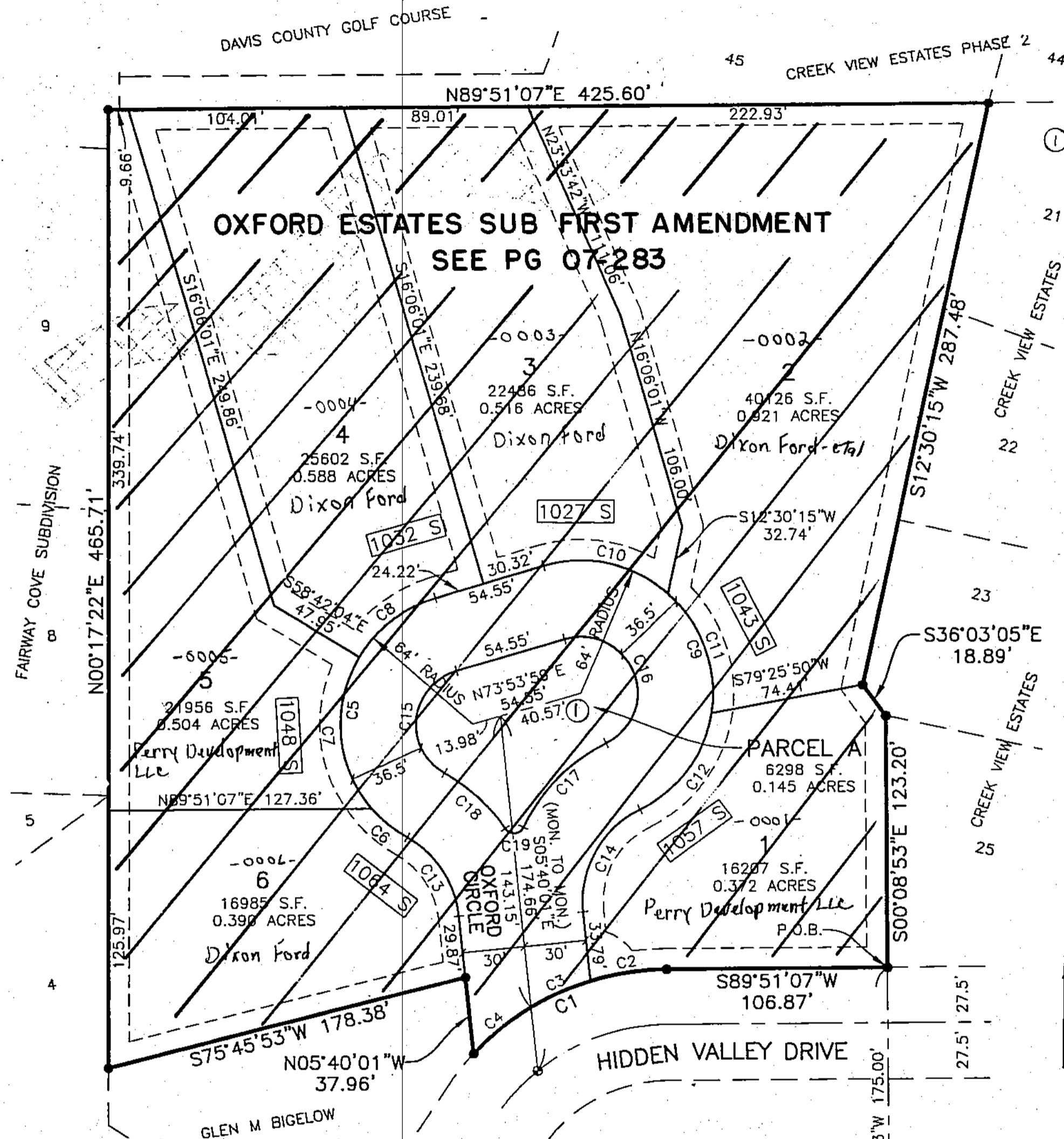
PART OF THE SOUTHEAST QUARTER OF SECTION 2, T.3N., R.1W., S.L.B.&M., U.S. SURVEY
 FRUIT HEIGHTS CITY, DAVIS COUNTY, UTAH
 AUGUST, 2011
 ALL OF LOT 24, CREEK VIEW ESTATES SUBD.

PREFIX 12
 07-280
 LAST #
 0007



SCALE:
 1" = 50'

07 280



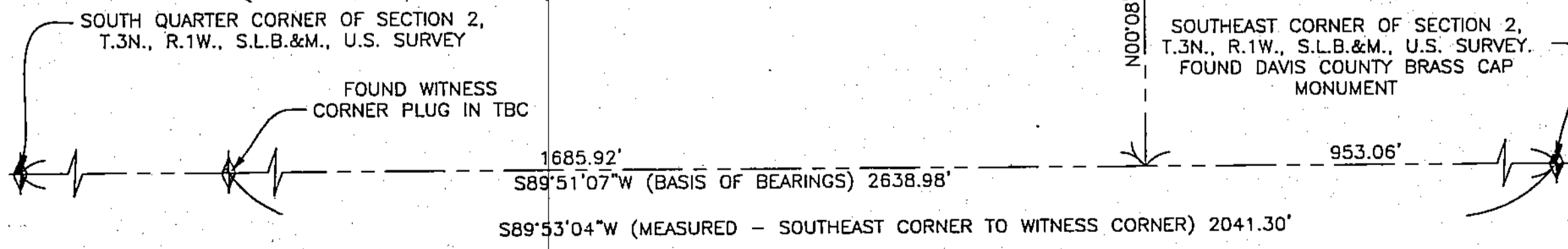
① Dixon Ford Parcel A (0007)

LEGEND

- = SECTION CORNER
- = SET STREET MONUMENT
-
- = BOUNDARY LINE
- = LOT LINE
- = ADJOINING PROPERTY
- = EASEMENTS
- = SECTION TIE LINE
- = ROAD CENTERLINE
- = FEMA FLOOD PLANE LOCATION
- = PUBLIC UTILITY EASEMENT

CURVE TABLE

CURVE	RADIUS	LENGTH	CHD LTH	CHORD DIR	DELTA
C1	127.50'	105.30'	102.33'	S66°11'33\"/>	47°19'08\"/>
C2	127.50'	37.43'	37.29'	S81°26'33\"/>	16°49'08\"/>
C3	127.50'	31.70'	31.62'	S65°54'36\"/>	14°14'47\"/>
C4	127.50'	36.17'	36.05'	S50°39'36\"/>	16°15'14\"/>
C5	64.00'	149.72'	117.84'	N06°52'55\"/>	134°02'08\"/>
C6	64.00'	22.39'	22.28'	N50°08'45\"/>	20°02'47\"/>
C7	64.00'	79.74'	74.68'	N04°23'43\"/>	71°23'18\"/>
C8	64.00'	47.59'	46.50'	N52°35'57\"/>	42°36'03\"/>
C9	64.00'	189.71'	127.50'	S21°10'57\"/>	169°50'08\"/>
C10	64.00'	64.28'	61.61'	S77°19'43\"/>	57°32'37\"/>
C11	64.00'	64.43'	61.74'	S19°43'04\"/>	57°40'40\"/>
C12	64.00'	61.00'	58.72'	S36°25'41\"/>	54°36'51\"/>
C13	50.00'	47.53'	45.76'	N32°54'05\"/>	54°28'08\"/>
C14	50.00'	60.56'	56.93'	S29°02'03\"/>	69°24'08\"/>
C15	27.50'	64.33'	50.63'	N06°52'57\"/>	134°02'03\"/>
C16	27.50'	81.52'	54.78'	N21°10'57\"/>	169°50'08\"/>
C17	86.50'	58.80'	57.67'	S44°15'43\"/>	38°56'47\"/>
C18	86.50'	40.64'	40.27'	S48°40'27\"/>	26°55'15\"/>
C19	5.00'	10.65'	8.75'	S85°47'15\"/>	121°59'51\"/>



Reeve & Associates, Inc.
 4155 S. HARRISON BLVD., SUITE 310, OGDEN, UTAH 84403
 TEL: (801) 821-3100 FAX: (801) 821-2884 WWW.REEVE-ASSOCIATES.COM
 LAND PLANNERS • CIVIL ENGINEERS • LAND SURVEYORS
 TRAFFIC ENGINEERS • STRUCTURAL ENGINEERS • LANDSCAPE ARCHITECTS

DEVELOPMENT: OXFORD ESTATES SUBDIVISION
 CITY: FRUIT HEIGHTS LOTS: 1 THRU 6 & PARCELA

SE 1/4 SEC. 2, T.3N., R.1W.
 S.L.M. DAVIS COUNTY, UTAH
 ALL OF LOT 24, CREEKVIEW ESTATES
 FILE #5110
 R 11-23-11