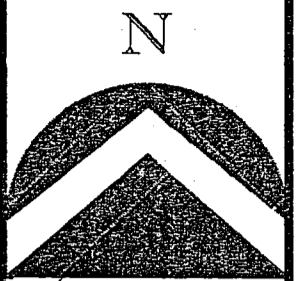


CUTLER SUBDIVISION PHASE 4

LOCATED IN THE SOUTHWEST QUARTER OF SECTION 31
TOWNSHIP 3 NORTH, RANGE 1 EAST, SLB&M
CENTERVILLE CITY, DAVIS COUNTY, UTAH

PREFIX
07-271

LAST #
0401



SCALE:
1" = 40'

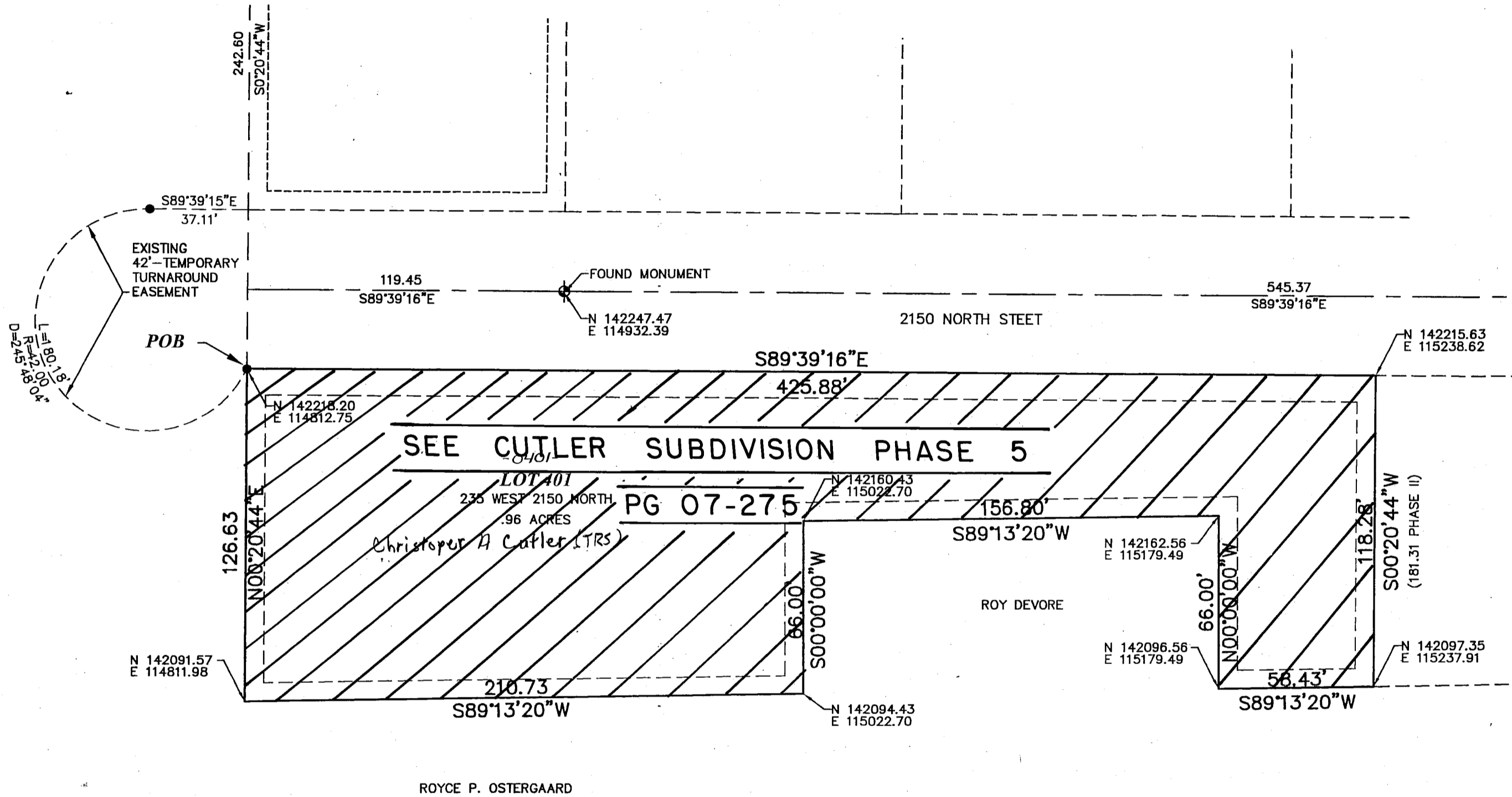
DEVELOPMENT: CUTLER SUBDIVISION PH. 4

CITY: CENTERVILLE LOT: 401

SW 1/4 SEC. 31, T.3N, R.1E

S.L.M. DAVIS COUNTY, UTAH

FILE# 4805
R 03-26-08



GENERAL NOTES:

1. ALL EASEMENTS SHOWN ARE TYPICAL 7' WIDE PUBLIC UTILITY EASEMENTS (P.U.E.) UNLESS OTHERWISE NOTED. ALL EASEMENTS FRONTING ROADS ARE 10' WIDE.
2. ALL COORDINATES SHOWN ARE BASED ON DAVIS COUNTY SURVEYOR'S OFFICE DATUM.
3. APPROVAL OF THIS DEVELOPMENT PLAT BY CENTERVILLE CITY DOES NOT CONSTITUTE ANY REPRESENTATION AS TO THE ADEQUACY OF SUBSURFACE SOIL CONDITIONS NOR THE LOCATION OR DEPTH OF GROUND WATER TABLES.
4. P.U.E. DENOTES A PUBLIC UTILITY EASEMENT AND A DRAINAGE EASEMENT.

H & A HILL & ARGYLE, Inc.
Engineering and Surveying
181 North 200 West, Suite #4, Bountiful, Utah 84010
(801) 298-2236 Phone, (801) 298-5853 Fax

271

07