

# MOUNTAIN SIDE SUBDIVISION PLAT "G" ONE LOT CONSERVATION EASEMENT MODIFICATION

~~A RE SUBDIVISION OF LOT 307 OF MOUNTAIN SIDE SUBDIVISION PLAT "G"  
ENTRY NO. 1600575 IN BOOK 2664 AT PAGE 459 CONSERVATION EASEMENT MODIFICATION~~

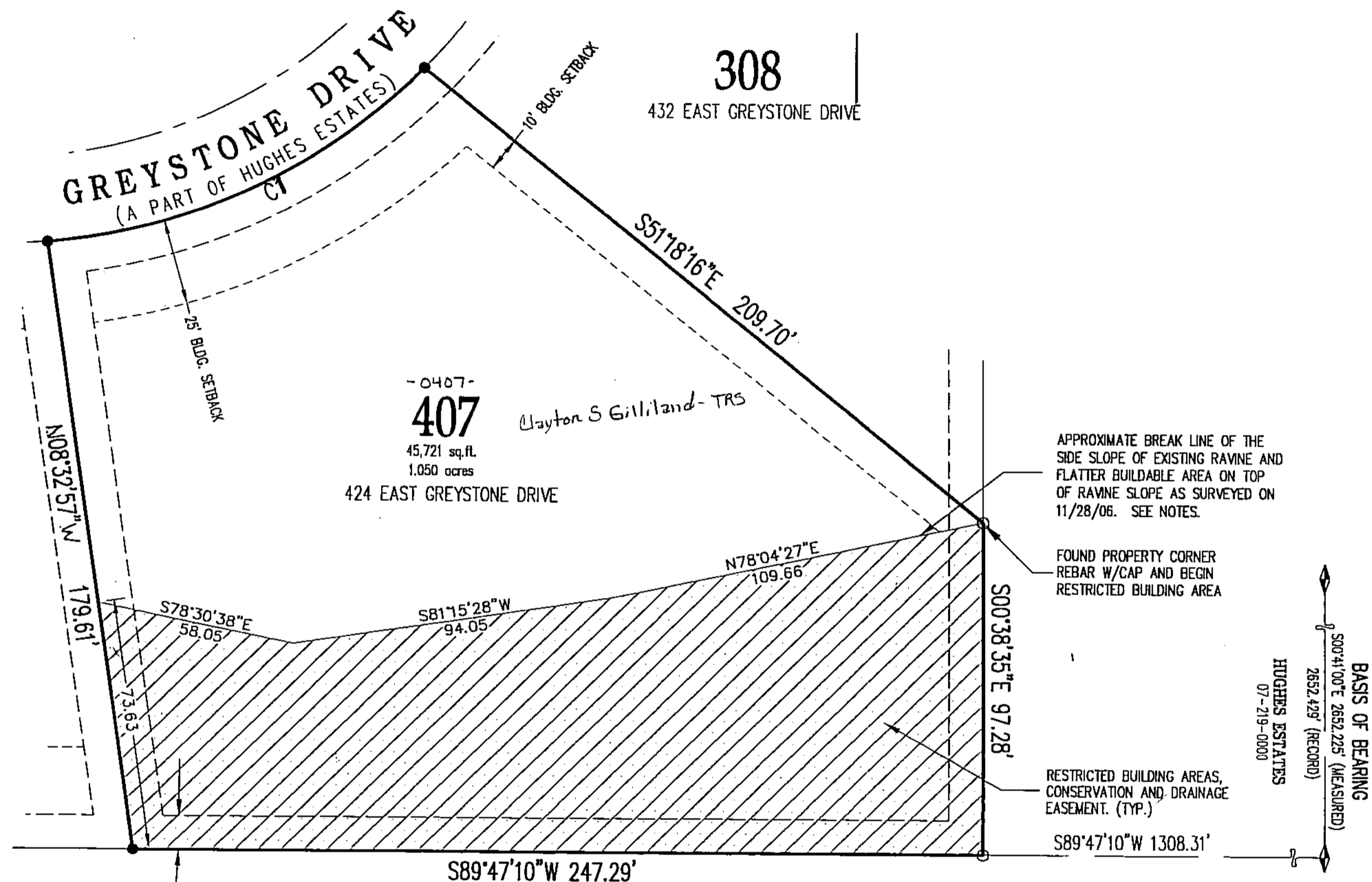
A PART OF THE NORTHEAST QUARTER OF SECTION 30,  
TOWNSHIP 3 NORTH, RANGE 1 EAST, SLB&M  
FARMINGTON CITY, DAVIS COUNTY, UTAH

PREFIX  
07-266

LAST #



SCALE:  
1" = 30'



10.00' PUBLIC UTILITY AND  
DRAINAGE EASEMENT  
ALONG REAR & FRONT  
LOT LINES TYP.

EAST QUARTER SECTION 30  
TWN.3 NO., RNG.1 EAST  
SLB&M FOUND: BRASS CAP  
N 147822.3536  
E 118232.2476

CURVE TABLE						
CURVE	DELTA	RADIUS	LENGTH	TANGENT	CHORD	CH BEARING
C1	40°23'44"	175.00	123.38	64.38	120.84	N64°40'38"E

### LEGEND & NOTES:

- SET 5/8 INCH BY 24 INCH STEEL BAR WITH SURVEYORS IDENTIFICATION CAP STAMPED: "MERIDIAN PLS 4938744 ON ALL BACK PROPERTY CORNERS. SET 1/2 INCH COPPER RIVET IN SIDEWALK AS WITNESS TO FRONT PROPERTY CORNERS. PROPERTY CORNERS SET ON, OR ABOUT THE DATE OF THIS CERTIFICATION.
- FOUND REBAR AND CAP STAMPED "MERIDIAN PLS 172851".

### NOTE:

- THE INTENT OF THE CONSERVATION EASEMENT IS TO PROTECT THE SENSITIVE SLOPE OF THE EXISTING RAVINE FOR DAMS CREEK. THIS MAP IS INTENDED TO MODIFY THE AREAS SHOWN ON THE ORIGINAL PLAT BASED ON THE CURRENT CONDITIONS IN THE FIELD. THE SURVEY WAS CONDUCTED ON 11/28/06. THE POINTS SURVEYED IN THE FIELD WERE APPROXIMATED BY STRAIGHT LINES WITH TWO INTERVAL INFLECTION POINTS WITHIN LOT 407 AS SHOWN.

RESTRICTED BUILDING AREA  
CONSERVATION AND  
DRAINAGE EASEMENT

NO STRUCTURE OR ACCESSORY STRUCTURE AS DEFINED BY THE FARMINGTON CITY ZONING ORDINANCE SHALL BE ALLOWED WITHIN RESTRICTED BUILDING AREAS. THE CONSERVATION EASEMENT SHALL DISALLOW FENCES, GRADING, LEVELING, EXCAVATION, CLEANING OF VEGETATION OR DUMPING OF ANY KIND.

- A GEOTECHNICAL REPORT WAS PREPARED FOR THIS PROJECT BY "EARTHTEC ENGINEERING, P.C.", DATED SEPT. 8, 1997.

- PUBLIC UTILITY EASEMENTS (P.U.E.'S) SHOWN ON THIS PLAT ARE 10' WIDE ALONG THE FRONT, REAR AND SIDE LOT LINES, UNLESS OTHERWISE NOTED.

PREPARED BY:



DEVELOPMENT: MOUNTAIN SIDE SUBD. PLAT G  
ONE LOT CONSERVATION EASEMENT MODIFICATION  
CITY: FARMINGTON LOT: 407

NE 1/4 SEC. 30, T.3N, R.1E  
S.L.M. DAVIS COUNTY, UTAH

FILE# 4649  
R 06-20-07

2666

07