

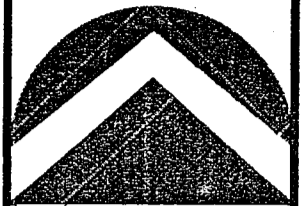
TEMPLETON SUBDIVISION

PART OF THE SOUTHEAST 1/4 OF THE NORTHWEST 1/4 OF SECTION 1,
TOWNSHIP 3 NORTH, RANGE 1 WEST, SALT LAKE BASE AND MERIDIAN
FRUIT HEIGHTS CITY, DAVIS COUNTY, UTAH

PREFIX
07-256

LAST #
0001

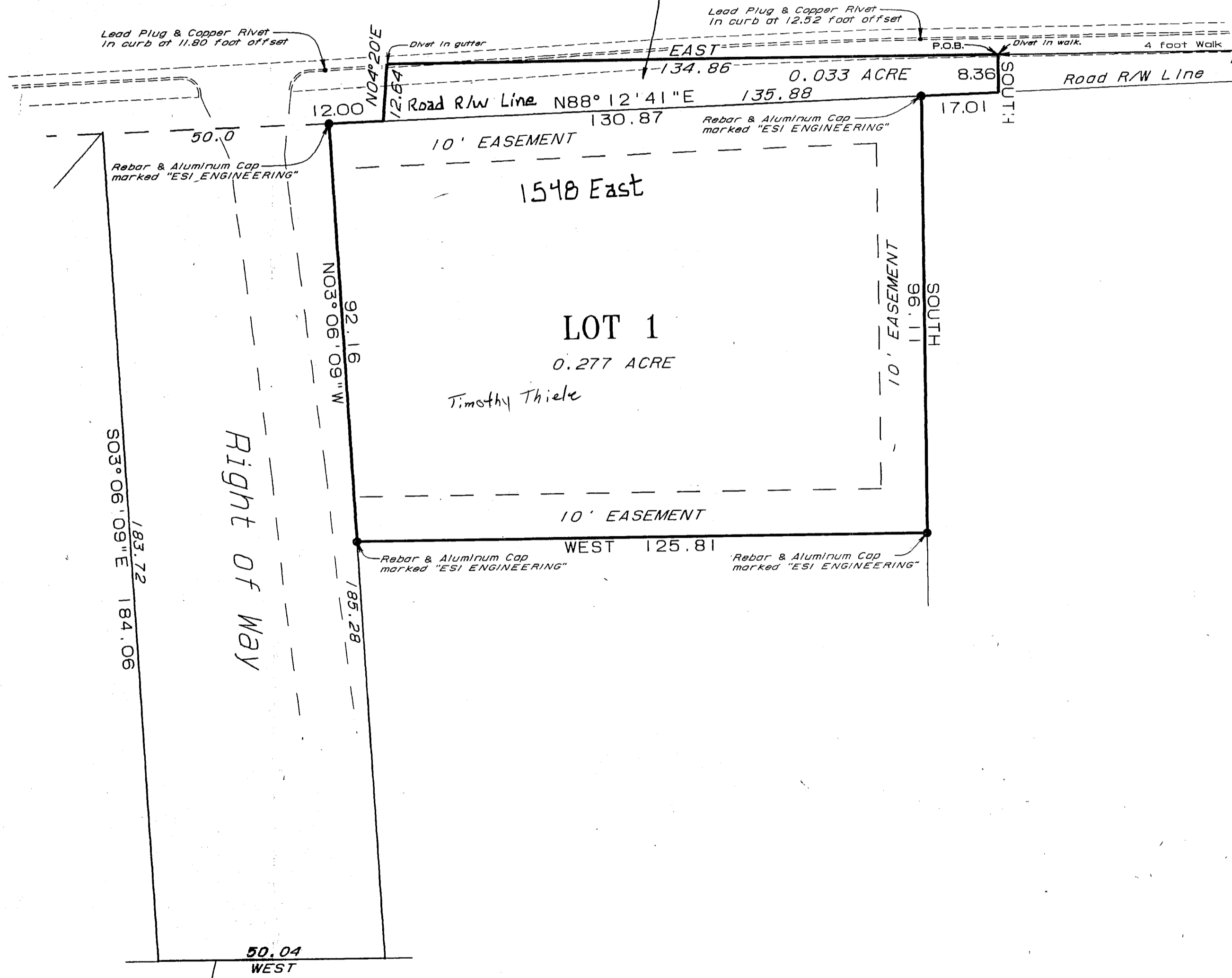
N



SCALE:
1" = 20'

NOTE: THE RECORDATION OF THIS PLAT DEDICATES
Road R/W ~~LOT 2~~ TO BE A PART OF NICHOLS ROAD

NICHOLS ROAD



DEVELOPMENT: TEMPLETON SUBDIVISION

CITY: FRUIT HEIGHTS LOTS: 1

SE 1/4 OF THE NW 1/4 SEC. 1, T.3N, R.1W

S.L.M. DAVIS COUNTY, UTAH

PREPARED BY

ESI ENGINEERING, INC.
3500 SOUTH MAIN STREET
SUITE 206
SALT LAKE CITY, UTAH 84115
(801) 263-1752

FILE# 4486
R 07-10-06

927

10