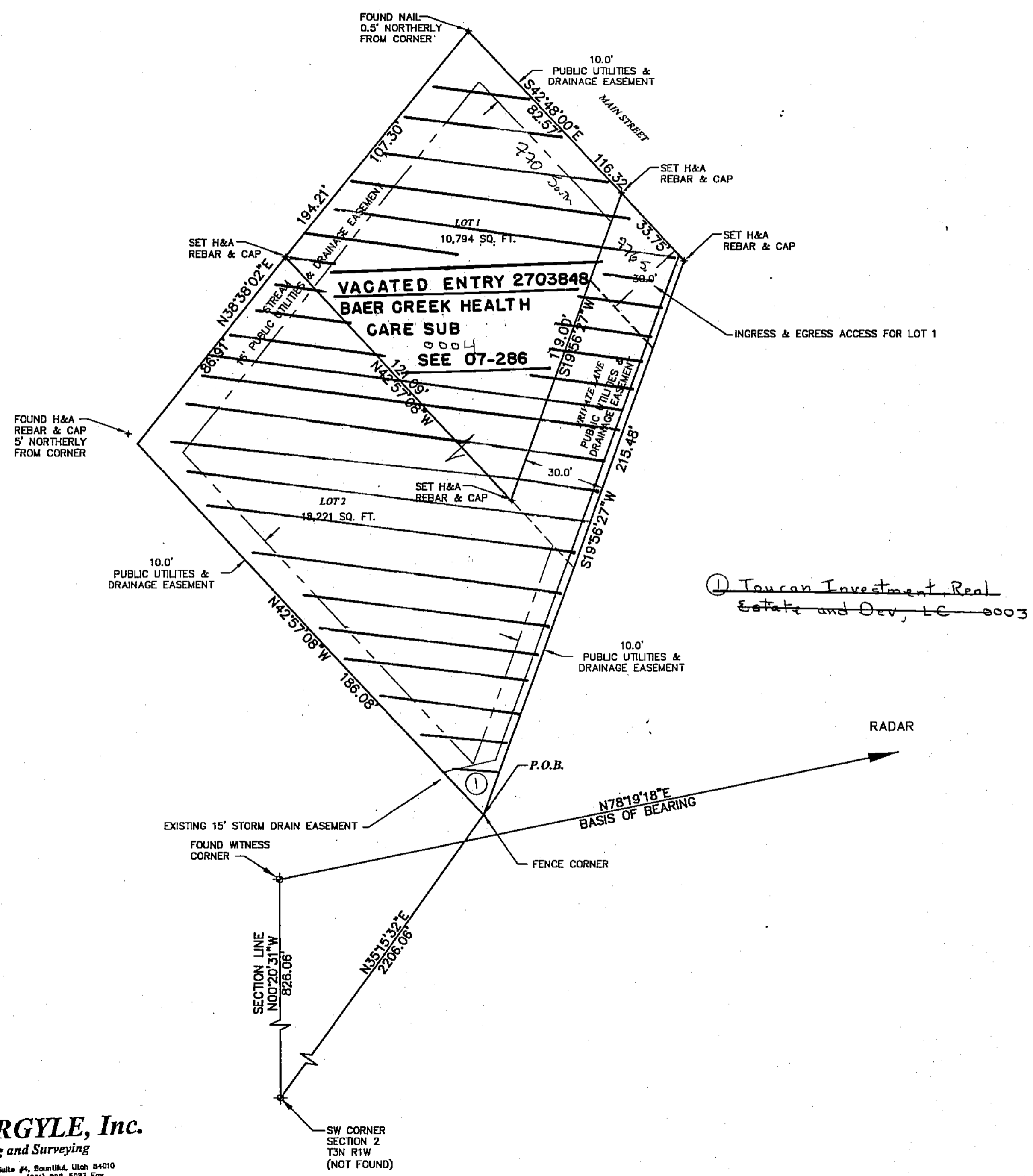


APPLE HOLLOW SUBDIVISION

LOCATED IN THE SOUTHWEST QUARTER OF SECTION 2, TOWNSHIP 3 NORTH, RANGE 1 WEST
SALT LAKE BASE AND MERIDIAN
KAYSVILLE CITY, DAVIS COUNTY, UTAH

PREFIX 12
07-253
LAST #
0004
N
SCALE:
1" = 30'



DEVELOPMENT: APPLE HOLLOW SUBD.
CITY: KAYSVILLE LOTS: 1 THRU 2

SW 1/4 OF SEC. 2, T.3N, R.1W
S.L.M. DAVIS COUNTY, UTAH
FILE# 4465
R 06-09-06

H HILL & ARGYLE, Inc.
A Engineering and Surveying
181 North 200 West, Suite #4, Bountiful, Utah 84010
(801) 298-2238 Phone, (801) 298-5983 Fax

253

07