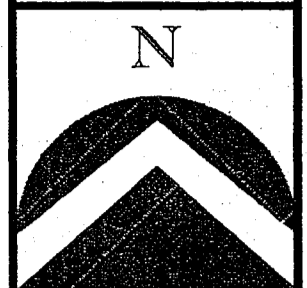


# CUTLER SUBDIVISION PHASE 3

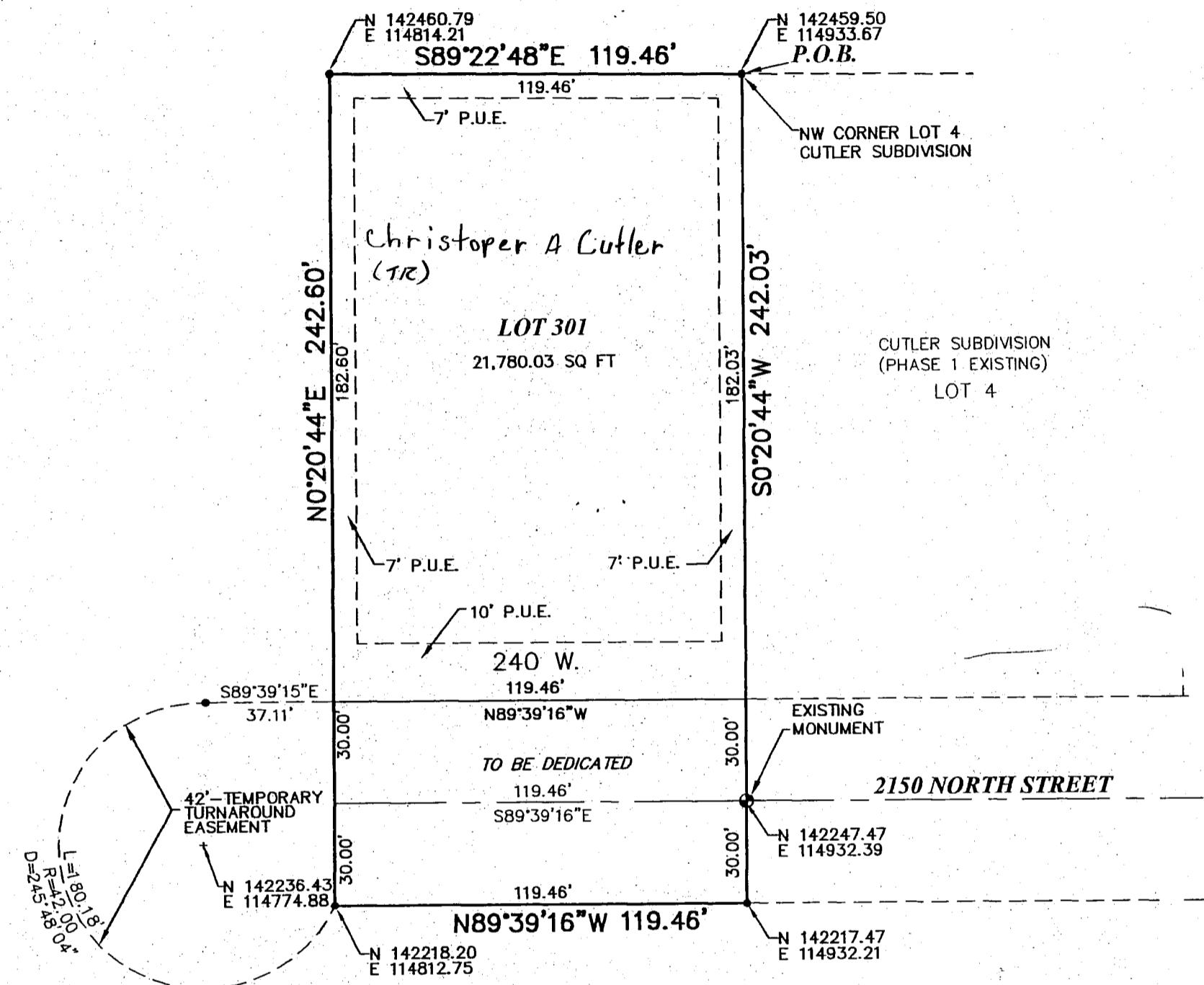
LOCATED IN THE SOUTHWEST QUARTER OF SECTION 31  
TOWNSHIP 3 NORTH, RANGE 1 EAST, SLB&M  
CENTERVILLE CITY, DAVIS COUNTY, UTAH

PREFIX  
07-250

LAST #  
0301



SCALE:  
1" = 40'



TEMPORARY TURN AROUND TO BE CONSTRUCTED  
BY DEVELOPER AND DEDICATED TO CENTERVILLE CITY  
BY SEPARATE RECORDED EASEMENT FOR PUBLIC USE AND  
AND EMERGENCY VEHICLE  
TURN AROUND.

GENERAL NOTES:

1. ALL EASEMENTS SHOWN ARE TYPICAL 7' WIDE PUBLIC UTILITY EASEMENTS (P.U.E.) UNLESS OTHERWISE NOTED. ALL EASEMENTS FRONTING ROADS ARE 10' WIDE.
2. ALL COORDINATES SHOWN ARE BASED ON DAVIS COUNTY SURVEYOR'S OFFICE DATUM.
3. APPROVAL OF THIS DEVELOPMENT PLAT BY CENTERVILLE CITY DOES NOT CONSTITUTE ANY REPRESENTATION AS TO THE ADEQUACY OF SUBSURFACE SOIL CONDITIONS NOR THE LOCATION OR DEPTH OF GROUND WATER TABLES.
4. P.U.E. DENOTES A PUBLIC UTILITY EASEMENT AND A DRAINAGE EASEMENT.

DEVELOPMENT: CUTLER SUBD. PH. 3  
CITY: CENTERVILLE LOTS: 301

SW 1/4 OF SEC. 31, T.3N, R.1E  
S.L.M. DAVIS COUNTY, UTAH

FILE# 4336  
R 10-07-05