

# MONTE VISTA SCHOOL SUBDIVISION

BEING PART OF THE NORTHWEST QUARTER OF THE SOUTHEAST QUARTER  
 OF SECTION 19, TOWNSHIP 3 NORTH, RANGE 1 EAST,  
 SALT LAKE BASE AND MERIDIAN,  
 FARMINGTON CITY, DAVIS COUNTY, UTAH

PREFIX 16  
 07-241

LAST #  
 0005

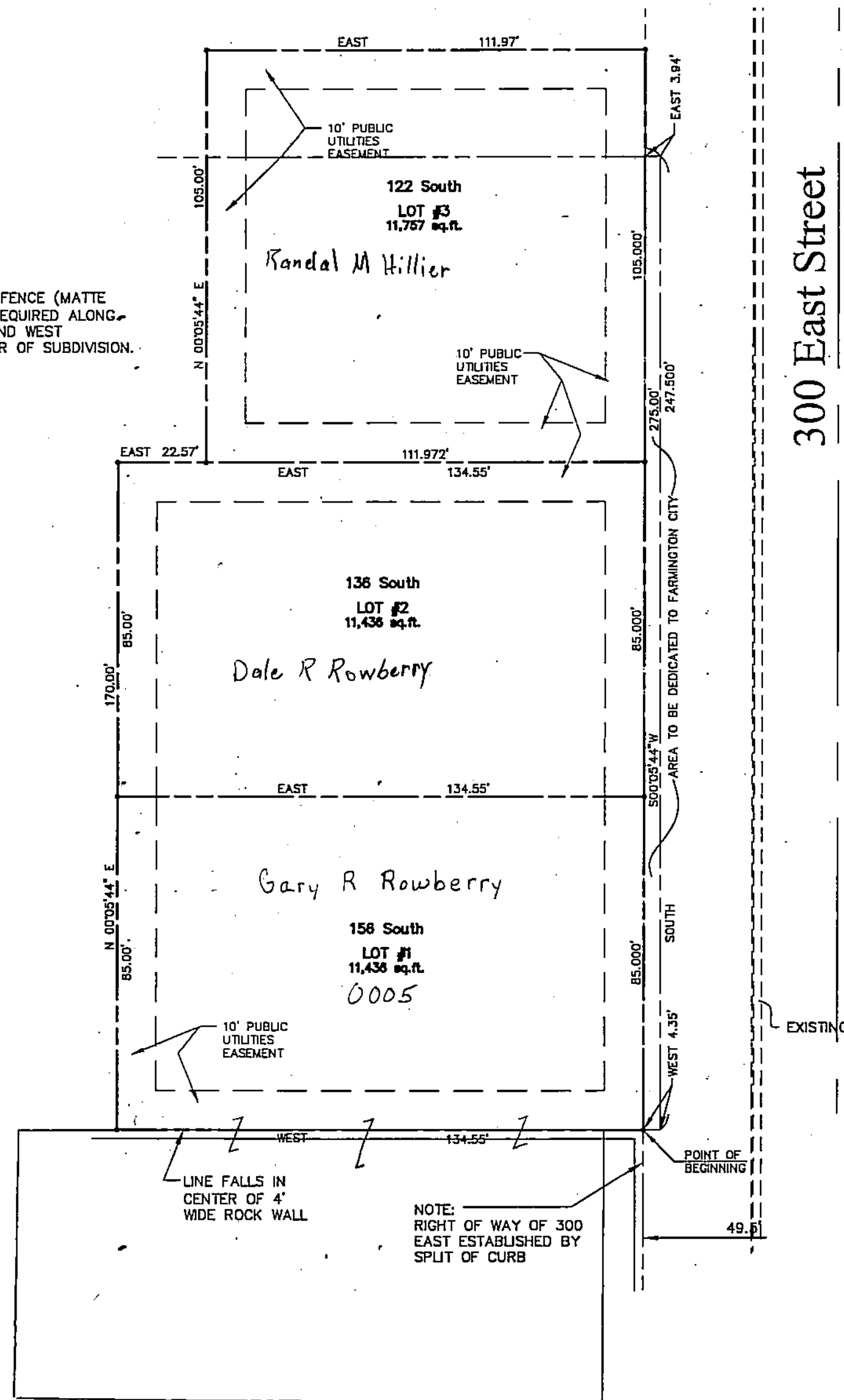
N

SCALE:  
 1" = 30'

241

07

NOTE:  
 6' VINYL FENCE (MATTE  
 FINISH) REQUIRED ALONG  
 NORTH AND WEST  
 PERIMETER OF SUBDIVISION.




300 East Street

### LEGEND

- SET REBAR AND CAP
- - - - - PUBLIC UTILITIES EASEMENT LINE
- \_\_\_\_\_ LOT LINE / BOUNDARY LINE

**CALDWELL RICHARDS SORENSEN**  
 ANSWERS TO INFRASTRUCTURE™



2060 East 2100 South  
 Salt Lake City, UT 84109  
 Phone: (801) 359-5565  
 Fax: (801) 359-4272  
 www.crsengineers.com

DEVELOPMENT: MONTE VISTA SCHOOL SUBD.

CITY: FARMINGTON      LOTS: 1 THRU 3

NW 1/4 OF SEC. 19, T.3N, R.1E  
 SE 1/4 OF SEC 19, T.3N, R.1E  
 S.L.M. DAVIS COUNTY, UTAH

FILE# 4109  
 R 09-24-04