

STEINER ESTATES AMENDED SUBDIVISION

PART OF THE NORTHWEST 1/4 AND THE NORTHEAST 1/4 OF SECTION 1, TOWNSHIP 3 NORTH, RANGE 1 WEST
SALT LAKE BASE AND MERIDIAN

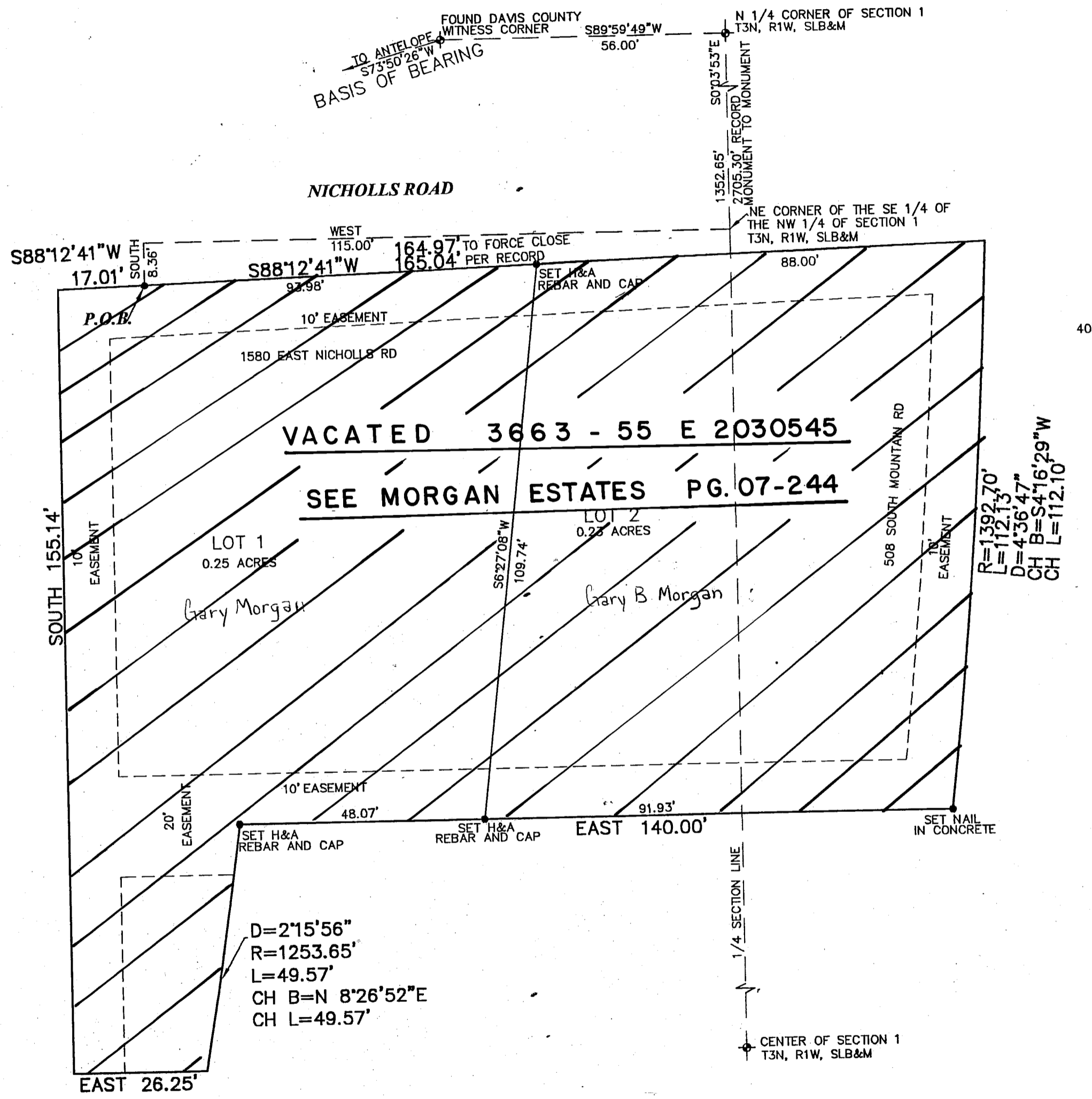
FRUIT HEIGHTS CITY, DAVIS COUNTY, UTAH

ALL OF LOTS 1 & 2 STEINER ESTATES

PREFIX
07-240
LAST #
0002



SCALE:
1" = 20'



DEVELOPMENT: STEINER ESTATES AMENDED

CITY: FRUIT HEIGHTS LOTS: 1 THRU 2

NW 1/4 OF SEC. 1, T.3N, R.1W
NE 1/4 OF SEC. 1, T.3N, R.1W
S.L.M. DAVIS COUNTY, UTAH

FILE# 4096
R 09-01-04

07 240