

POTTER SUBDIVISION

PART OF THE NORTHEAST QUARTER OF SECTION 2, T.3N., R.1W., S.L.B.& M., U.S. SURVEY
 ALSO PART OF BLOCK 2 PLAT E KAYSVILLE TOWNSITE SURVEY
 KAYSVILLE CITY, DAVIS COUNTY, UTAH

PREFIX
07-229

LAST #

N



SCALE:
1" = 40'

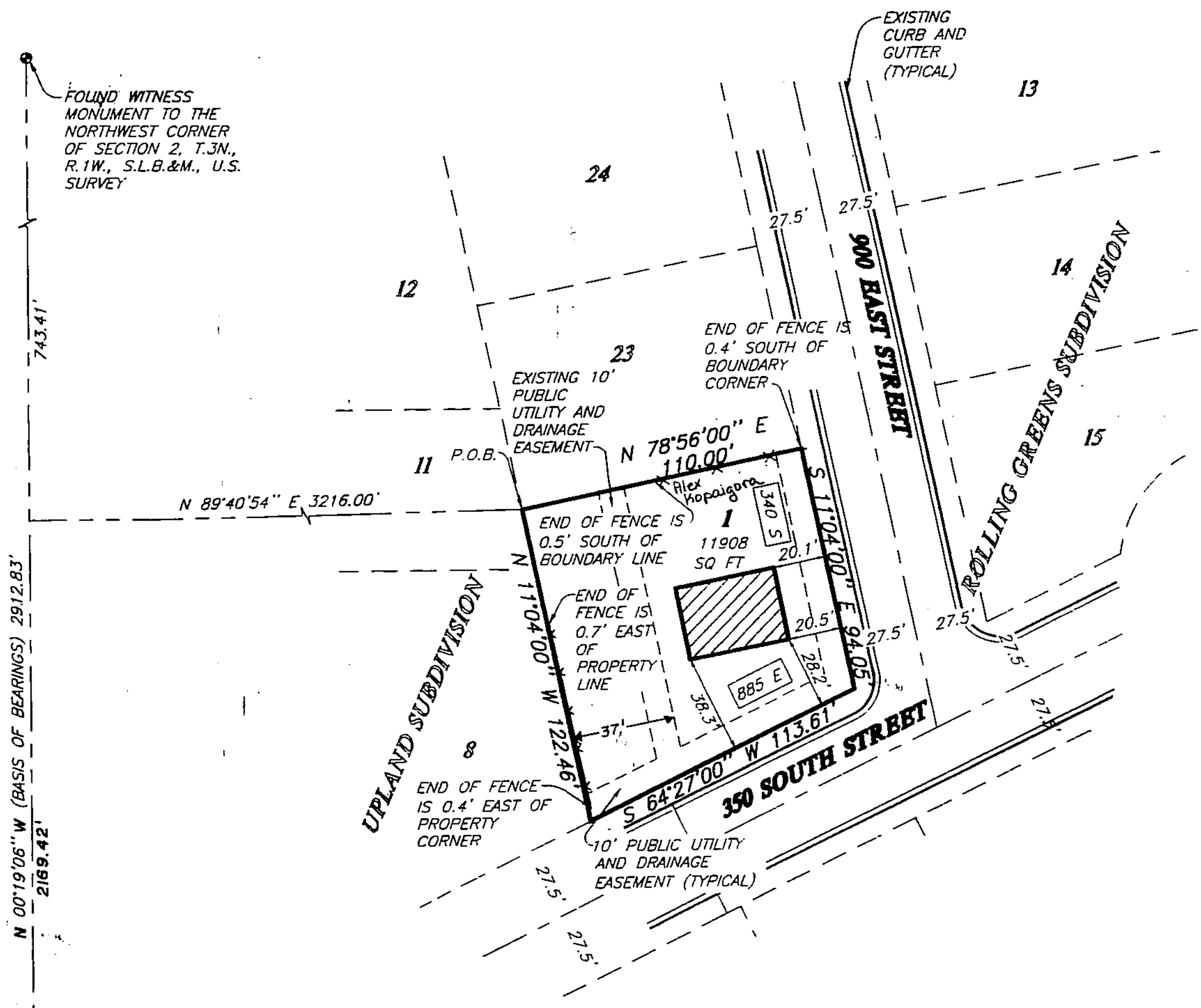
DEVELOPMENT: POTTER SUBDIVISION

CITY: KAYSVILLE LOTS: 1

NE 1/4 SEC. 2, T.3N., R. 1W

S.L.M. DAVIS COUNTY, UTAH

FILE# 3594
R 10-12-01



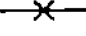


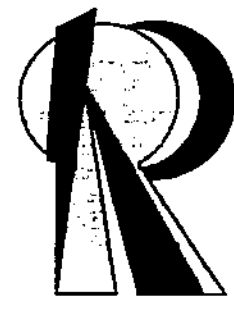
FOUND WITNESS MONUMENT TO THE NORTHWEST CORNER OF SECTION 2, T.3N., R.1W., S.L.B.&M., U.S. SURVEY

N 00°19'06\" W (BASIS OF BEARINGS) 2912.83'
2169.42'

WEST QUARTER CORNER OF SECTION 2, T.3N., R.1W., S.L.B.&M., U.S. SURVEY.

Legend

-  = SECTION CORNER
-  = WITNESS MONUMENT
-  = EXISTING FENCE



REEVE & ASSOCIATES, INC.

Civil Engineering * Structural Engineering
 Surveying * Land Planning * Landscape Architecture
 4155 S. HARRISON BLVD. STE. #310 OGDEN, UTAH 84403 (801) 621-3100 FAX (801) 621-2666
 95 W. 100 So. STE. #310 LOGAN, UTAH 84321 (435) 752-3303 FAX (435) 752-2266

07 229