

-Cutler Subdivision Phase II-

Located In The Southwest Quarter Of Section 31
T3N, R1E, SLB&M, Centerville City, Davis County, Utah

PREFIX
07-216

LAST #

N



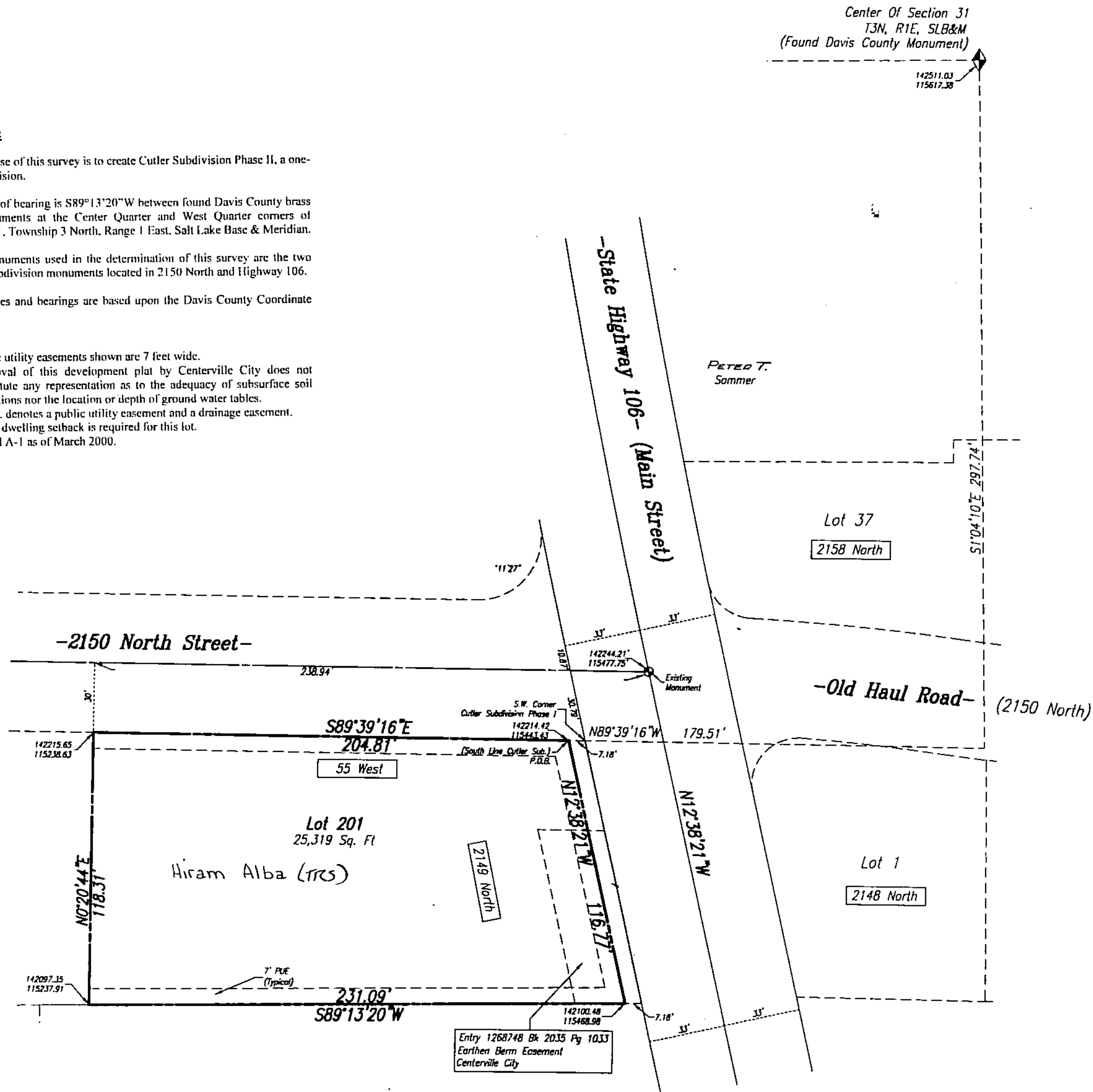
SCALE:
1" = 40'

Comments:

1. The purpose of this survey is to create Cutler Subdivision Phase II, a one-lot subdivision.
2. The basis of bearing is S89°13'20"W between found Davis County brass cap monuments at the Center Quarter and West Quarter corners of Section 31, Township 3 North, Range 1 East, Salt Lake Base & Meridian.
3. Other monuments used in the determination of this survey are the two Cutler Subdivision monuments located in 2150 North and Highway 106.
4. Coordinates and bearings are based upon the Davis County Coordinate System.

Notes:

1. Public utility easements shown are 7 feet wide.
2. Approval of this development plat by Centerville City does not constitute any representation as to the adequacy of subsurface soil conditions nor the location or depth of ground water tables.
3. P.U.E. denotes a public utility easement and a drainage easement.
4. A 30' dwelling setback is required for this lot.
5. Zoned A-1 as of March 2000.



07-216

DEVELOPMENT: CUTLER SUBDIVISION PHASE II
CITY: CENTERVILLE LOTS: 201

SW 1/4 SECTION 31, T. 3N, R. 1E
S.L.M. DAVIS COUNTY, UTAH
R 04-10-00