

AMENDED SUBDIVISION OF LOTS 15 & 16

BAYVIEW HEIGHTS PLAT B

A SUBDIVISION OF PART OF SECTION 18,
TOWNSHIP 3 NORTH, RANGE 1 EAST,
SALT LAKE BASE AND MERIDIAN
FARMINGTON CITY, DAVIS COUNTY, UTAH

PREFIX 17
07-204

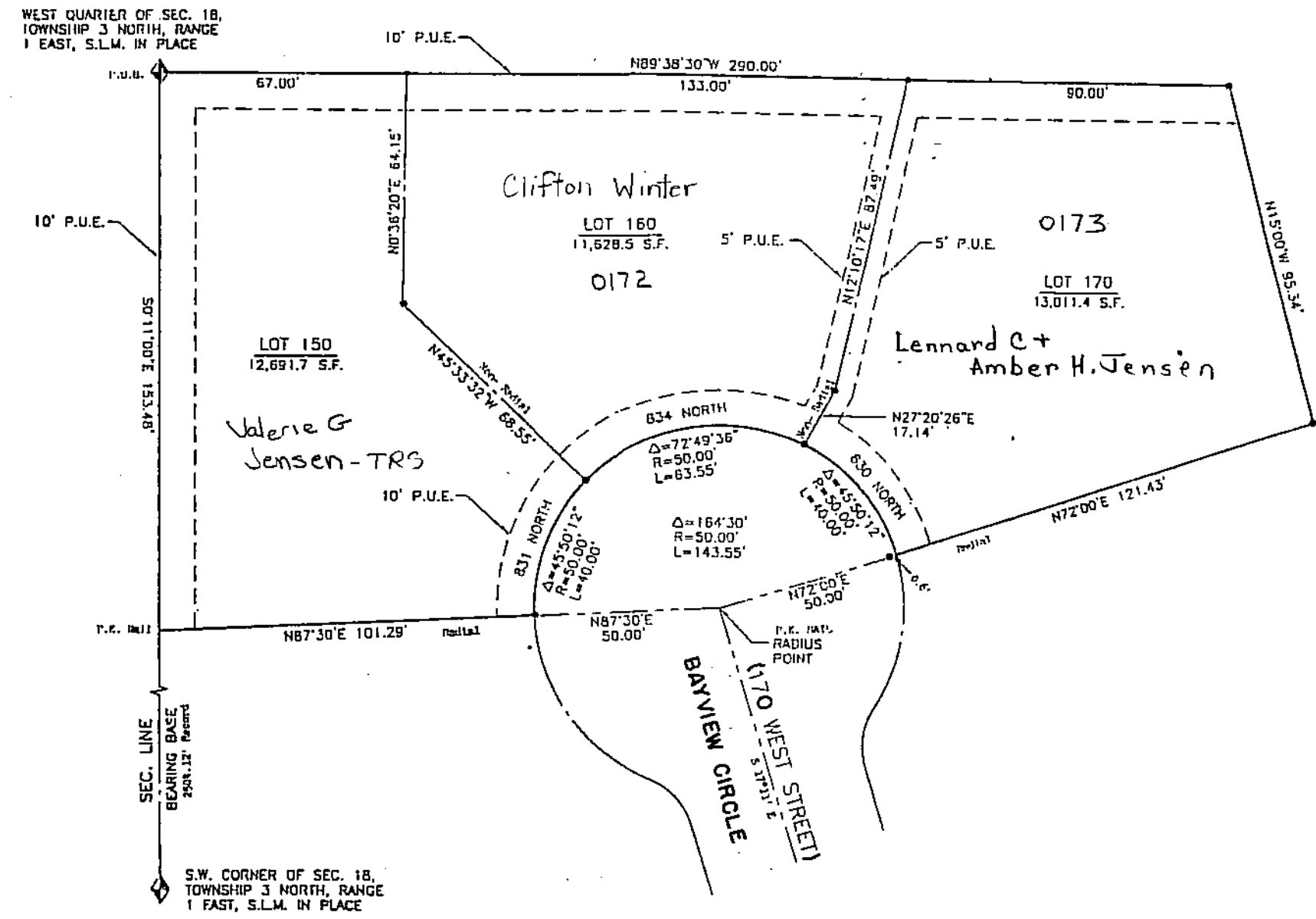
LAST #
0173



SCALE:
1"=40'

SUBDIVISION: AMENDED SUB. OF LOTS 15 & 16 BAYVIEW HEIGHTS PLAT B
CITY: FARMINGTON LOTS: 150, 160, 170

A PART OF SECTION 18 T3N R1E
SALT LAKE MERIDIAN
DAVIS COUNTY UTAH



204

07