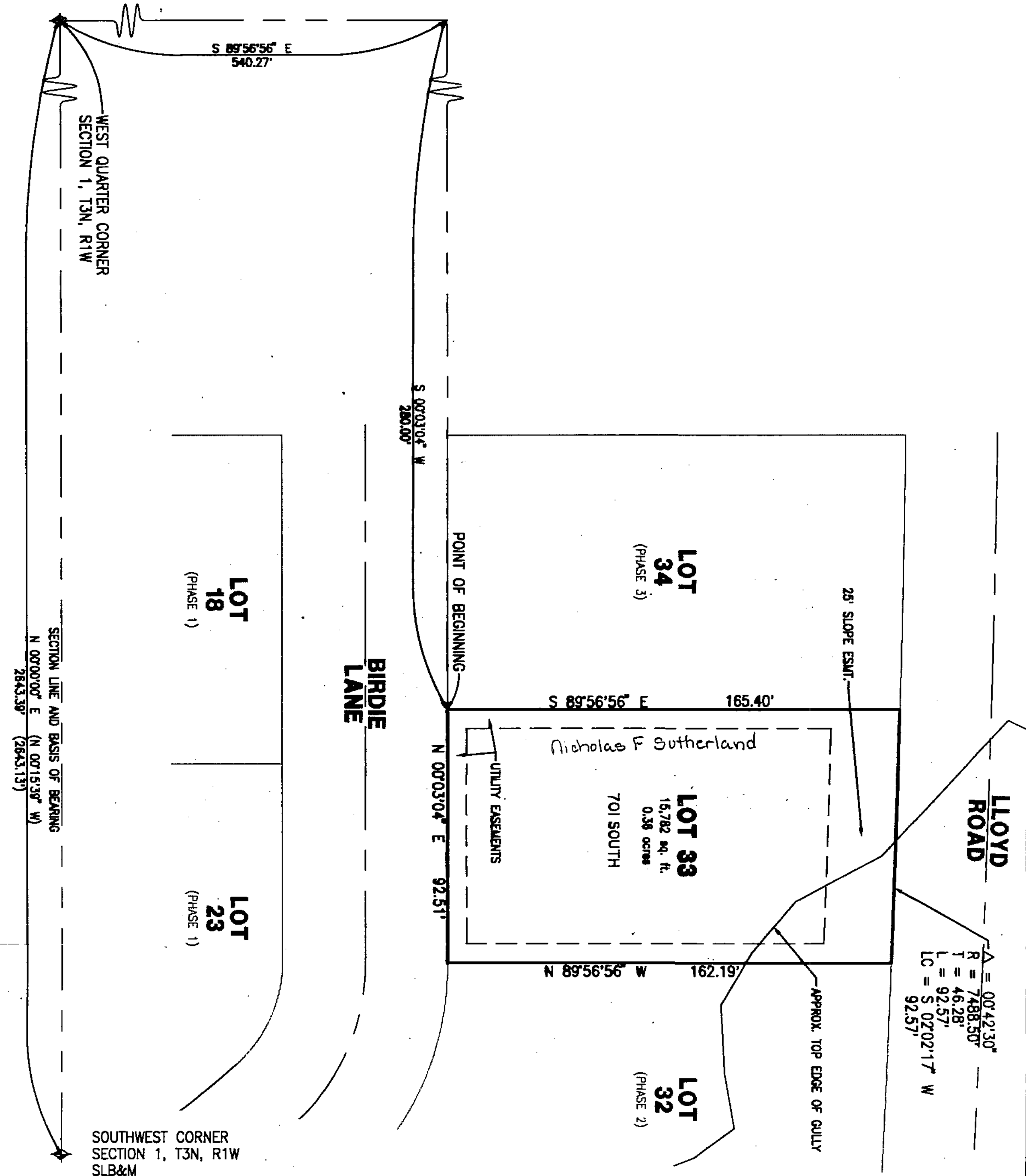


BACK NINE - PHASE 4

PART OF THE SOUTHWEST 1/4 OF SECTION 1, T3N, R1W, SLB&M, U.S. SURVEY
FRUIT HEIGHTS CITY, DAVIS COUNTY, UTAH



PREPARED BY

CS
CONSULTING ENGINEERS, INC.
2004 WASHINGTON BLVD, SUITE 200 - OGDEN, UTAH 84401
PHONE 801/241-4444 - FAX 801/241-4444
CIVIL ENGINEERING • SURVEYING

PREFIX
07-171
LAST-

NORTH

SCALE
1" = 30'

SUBDIVISION BACK NINE - PHASE 4
CITY FRUIT HEIGHTS LOTS 33 TO -
DAVIS COUNTY GEO-GRAPHIC INFORMATION DIVISION

SW SECTION 1 T3N R1W
Salt Lake Meridian
Davis County, Utah
R 8-31-94

171

20