

**ROLLING HILLS ESTATES SUB PLAT H AMD**  
**CENTERVILLE**

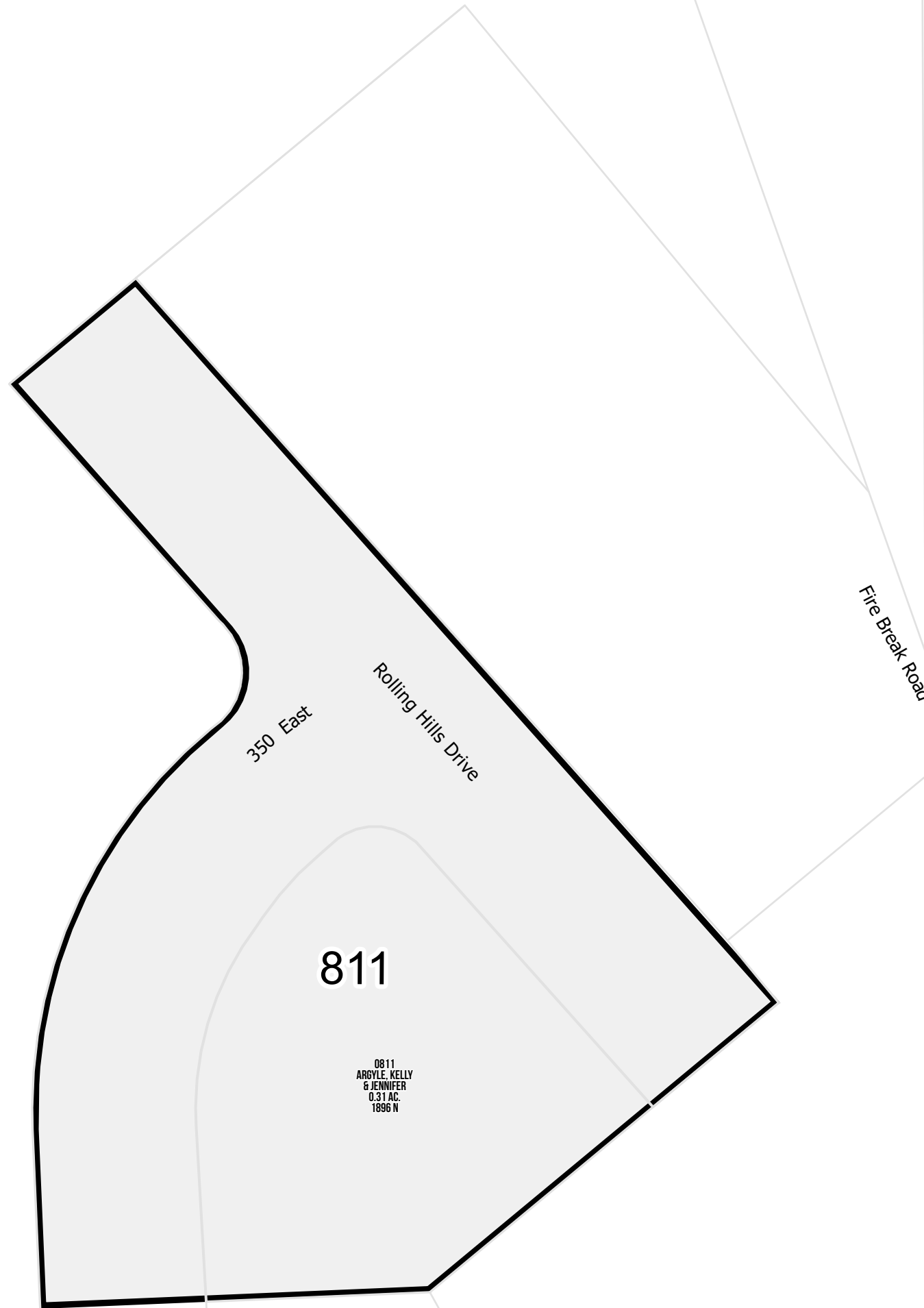
Tax ID Prefix

**07-146**

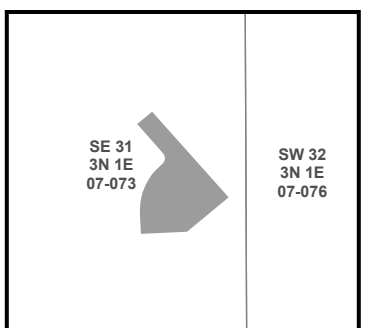
Plat ID: 1991

Sheet 1 of 1

Year Recorded: 1991



1 inch = 40 feet



S L B & M

NOTE: Distance, bearings and radius values are approximate. User needs to refer to the recorded legal descriptions for exact bearing and distances. For cadastral or technical information, see the dedicated plat and or legal descriptions in recorded documents.

