

FARMINGTON HILLS EAST

LOCATED IN THE NORTHWEST QUARTER OF SECTION 18, T.3N., R.1E., S.L.B. & M.

PLAT B

07-145

LAST

0206

NORTH

SCALE

1" = 60'

SUBDIVISION FARMINGTON HILLS EAST PLAT B
 CITY FARMINGTON LOTS 201 TO 204
 DAVIS COUNTY GEO-GRAPHIC INFORMATION DIVISION

NW1/4 SECTION 18 T3N R1E
 Salt Lake Meridian
 Davis County, Utah

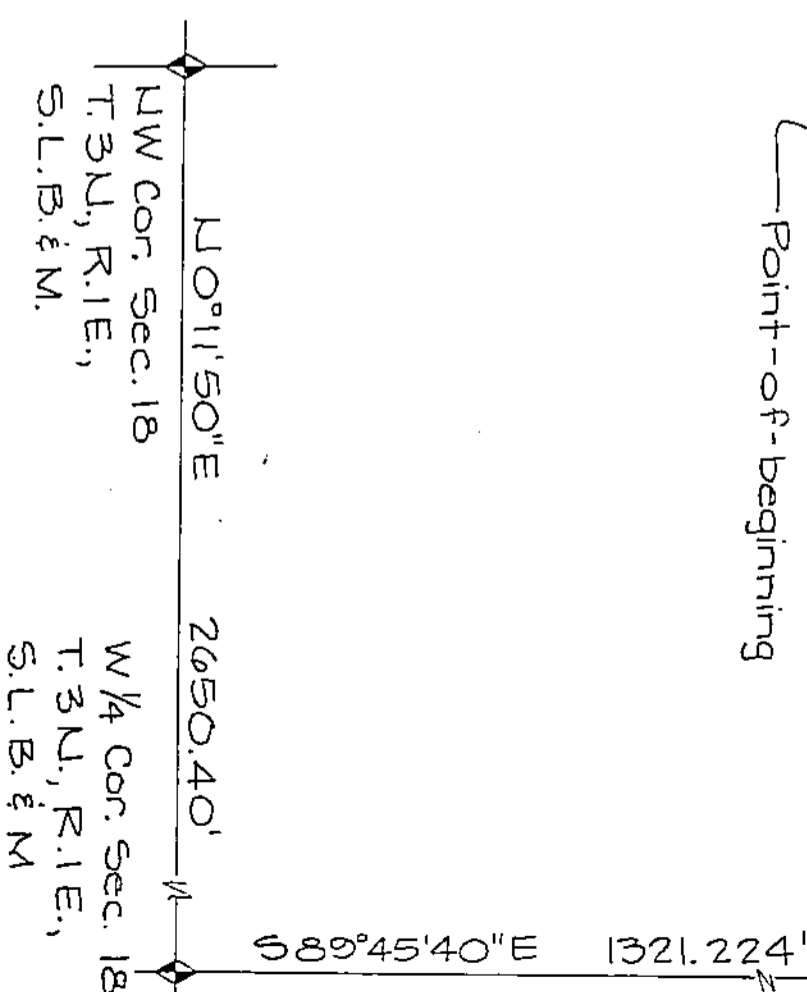
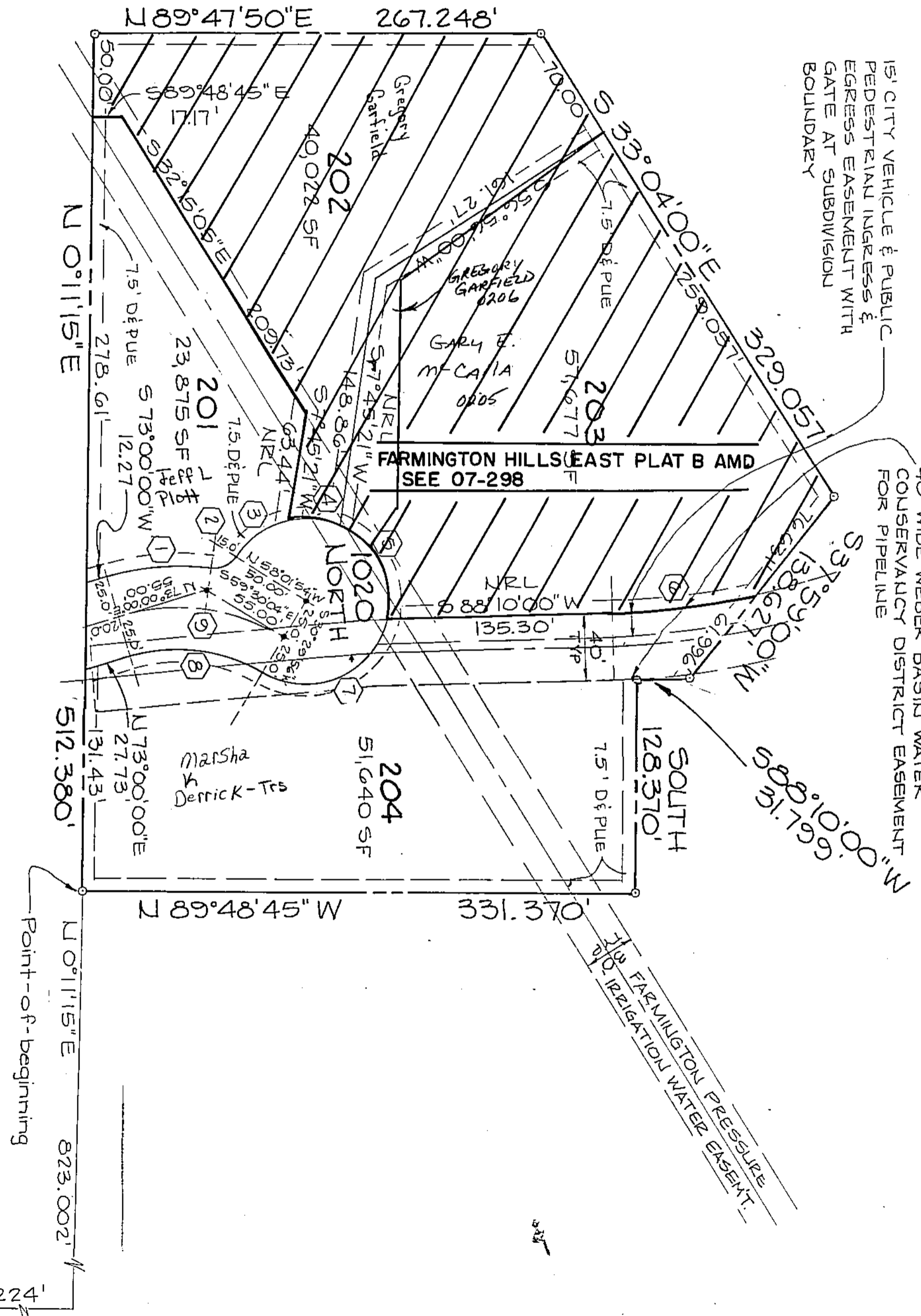
R-2-7-90

LEGEND

- MONUMENT TO BE SET
- 7.5' D.E.P.U.E 7.5' DRAINAGE & PUBLIC UTILITIES EASEMENT (REQ'D. ON ALL LOT LINES)
- RL RADIAL LINE
- NRL NON-RADIAL LINE

LOT	ADDRESS
201	21 EAST 1020 NORTH
202	37 EAST 1020 NORTH
203	49 EAST 1020 NORTH
204	36 EAST 1020 NORTH

#	Δ	R	L	C	T
1	24°18'26"	150.00'	63.64'	63.16'	32.30'
2	65°20'20"	15.00'	17.11'	16.19'	9.62'
3	46°10'17"	50.00'	40.29'	39.21'	21.31'
4	34°53'17"	50.00'	30.45'	29.98'	15.71'
5	79°16'52"	50.00'	69.19'	63.80'	41.42'
6	10°20'59"	480.00'	86.71'	86.59'	43.47'
7	108°11'24"	50.00'	94.41'	81.00'	69.06'
8	47°29'56"	100.00'	82.90'	80.55'	44.00'
9	47°29'56"	125.00'	103.63'	100.68'	55.00'



545

LO