

ROLLING HILLS ESTATES SUB PLAT G

CENTERVILLE

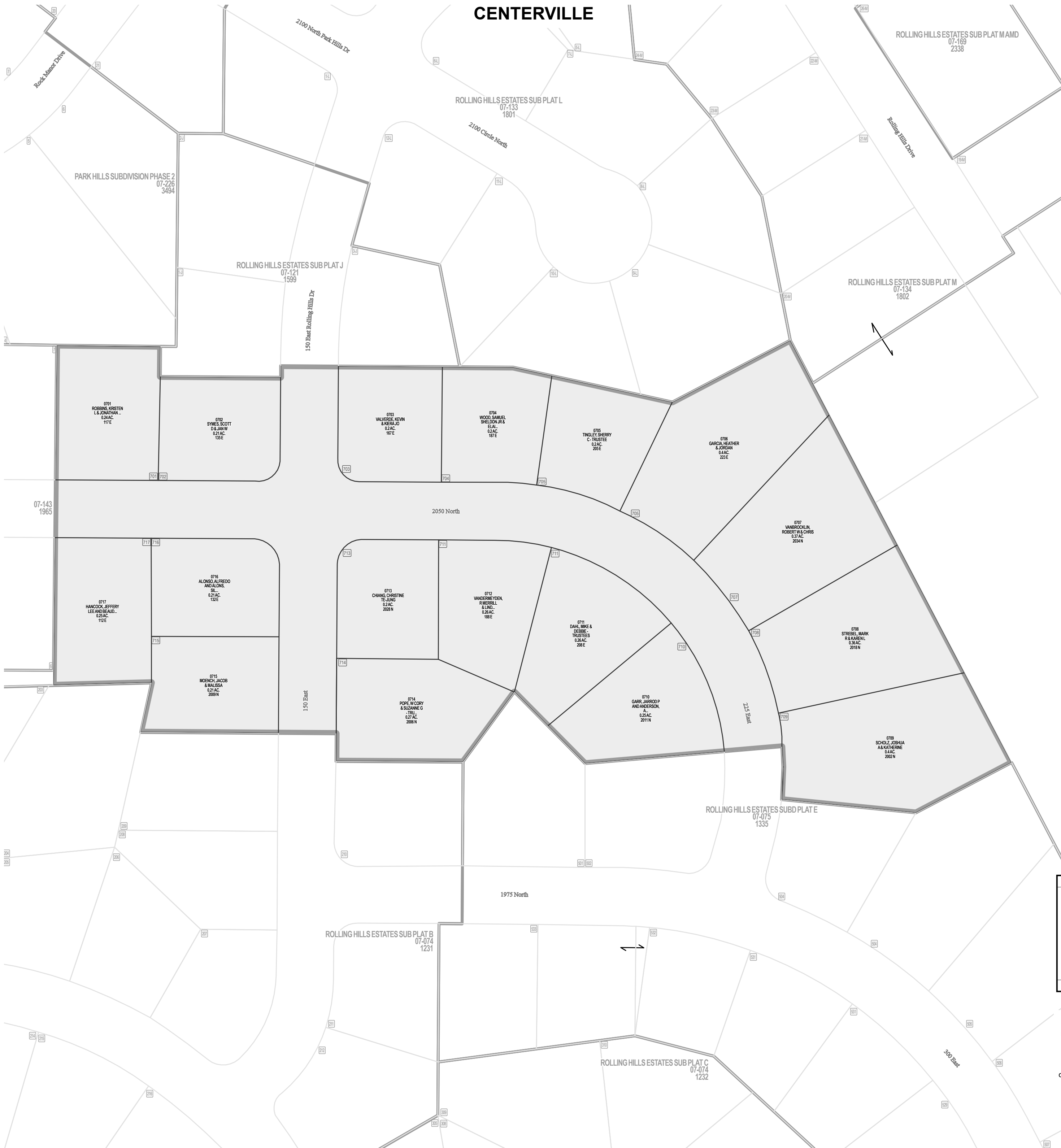
Tax ID Prefix

07-115

Plat ID: 1436

Sheet 1 of 1

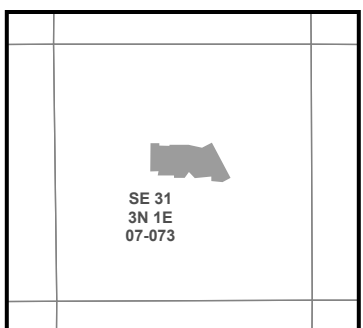
Year Recorded: 1982



Parcel ID

Lot Number

1 inch = 60 feet



SLB & M

NOTE: Distance, bearings and radius values are approximate. User needs to refer to the recorded legal descriptions for exact bearing and distances. For cadastral or technical information, see the dedicated plat and or legal descriptions in recorded documents.

