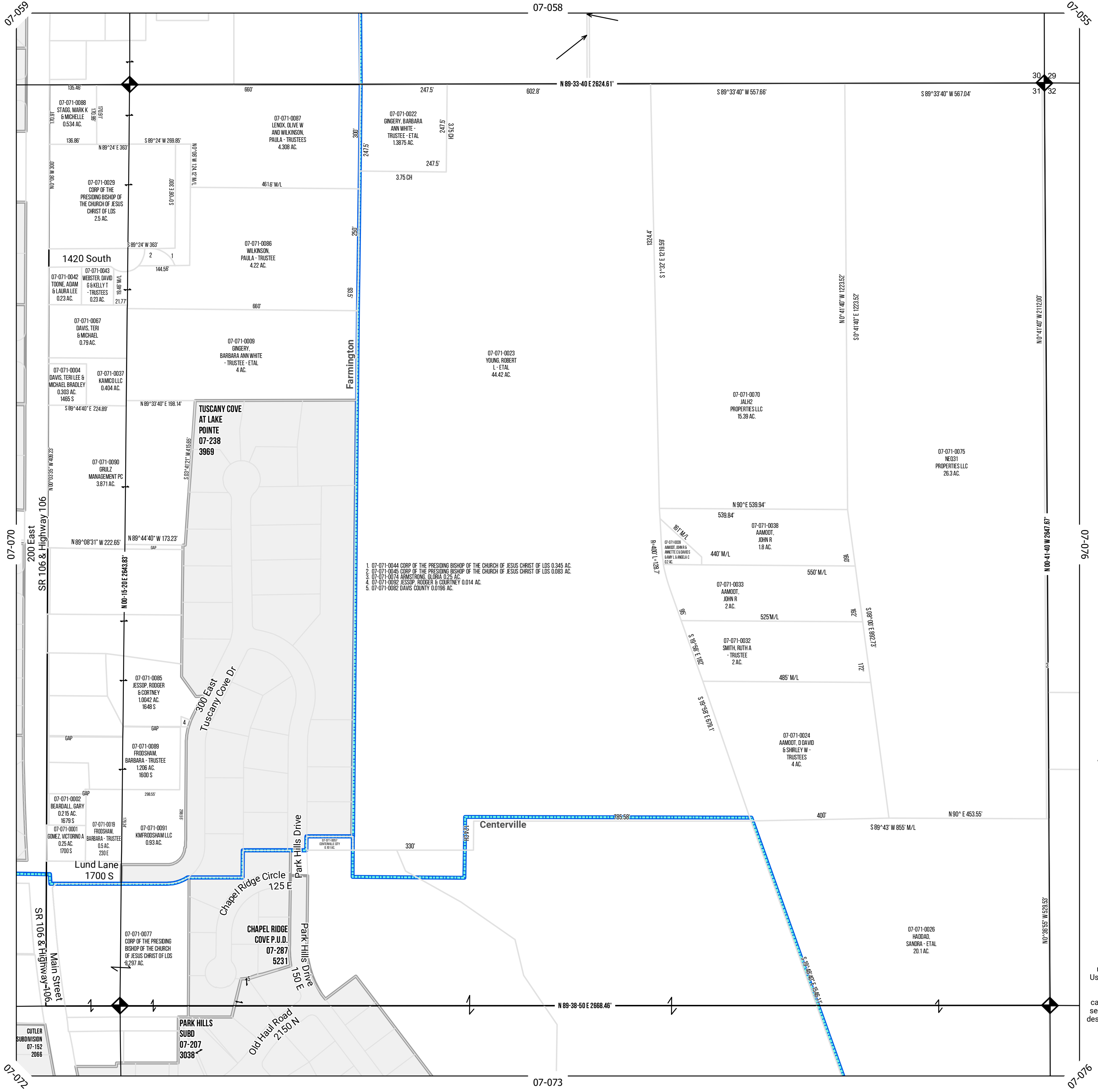


NE Quarter  
Section 31  
3N 1E  
SLB & M

Tax ID Prefix

07 - 071

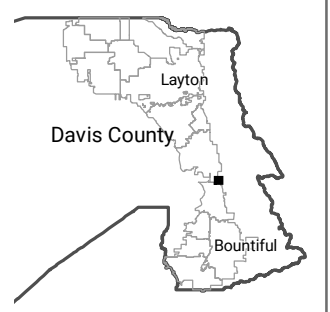
Sheet 1 of 1



- 1. 07-071-0044 CORP OF THE PRESIDING BISHOP OF THE CHURCH OF JESUS CHRIST OF LDS 0.345 AC.
- 2. 07-071-0045 CORP OF THE PRESIDING BISHOP OF THE CHURCH OF JESUS CHRIST OF LDS 0.063 AC.
- 3. 07-071-0074 ARMSTRONG, GLOBA 0.25 AC.
- 4. 07-071-0092 JESSOP, RODGER & COURTNEY 0.014 AC.
- 5. 07-071-0082 DAVIS COUNTY 0.0196 AC.



1 inch = 200 feet



NOTE: Distance, bearings and radius values are approximate. User needs to refer to the recorded legal descriptions for exact bearing and distances. For cadastral or technical information see the dedicated plat and/or legal descriptions in recorded documents.



Last update: 6/4/2021