

NW Quarter

Section 29

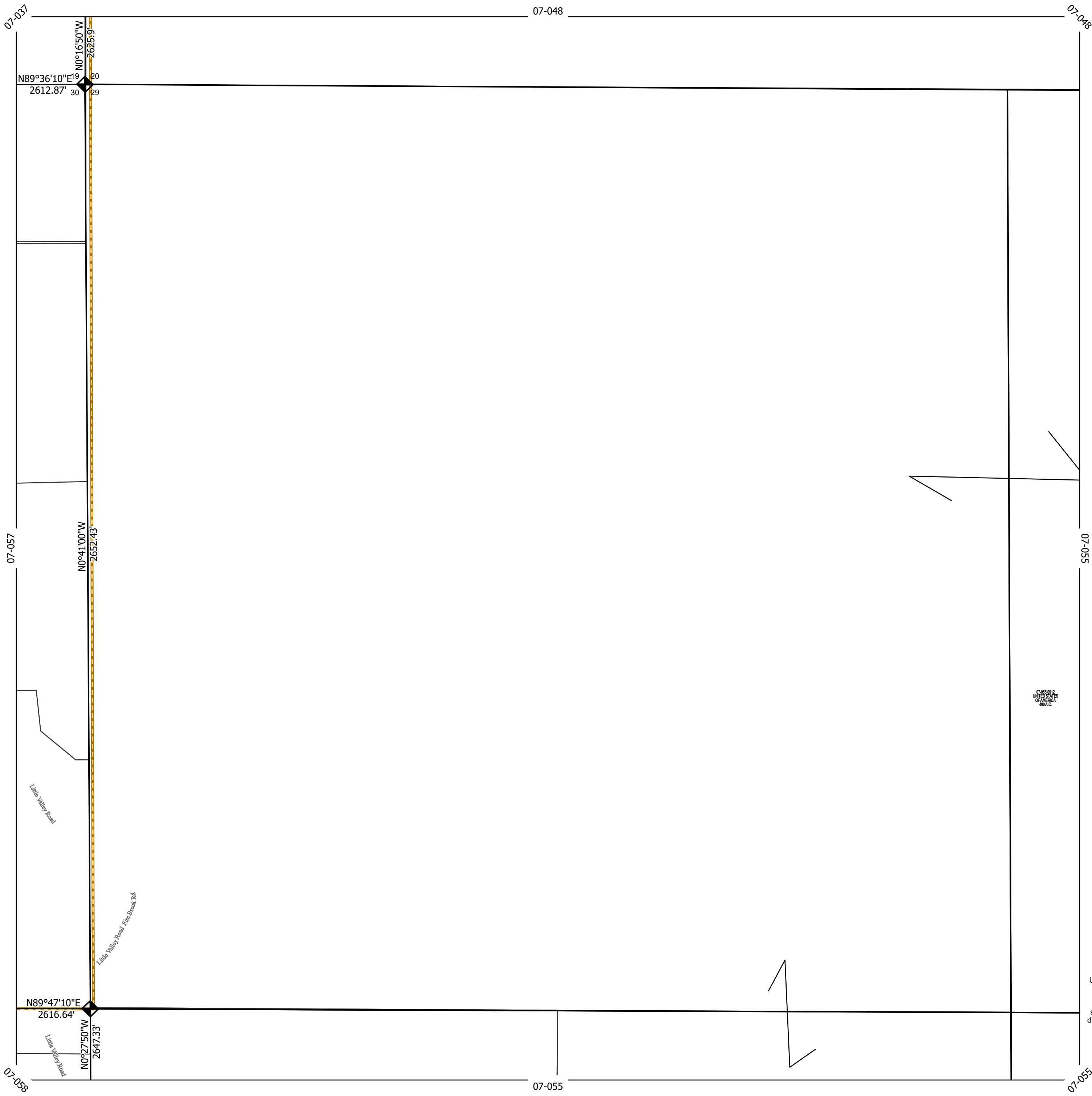
3N 1E

S L B & M

Tax ID Prefix

07 - 055

Sheet 1 of 4

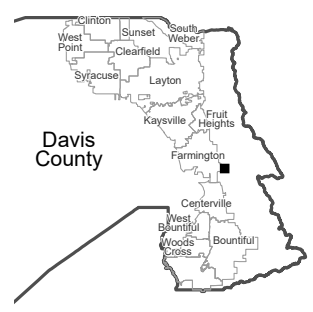


07-055-0012
UNITED STATES
OF AMERICA
400 A.C.



BOOK - PAGE
PLAT NUMBER

1 inch = 200 feet



NOTE: Distance, bearings and radius values are approximate. User needs to refer to the recorded legal descriptions for exact bearing and distances. For cadastral or technical information see the dedicated plat and/or legal descriptions in recorded documents.



Last update: 2/2/2023

NE Quarter

Section 29

3N 1E

S L B & M

Tax ID Prefix

07 - 055

Sheet 2 of 4

07-048

07-048

07-049

07-055

07-054

07-055

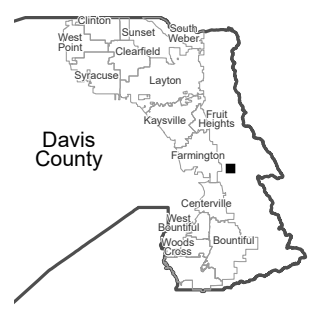
07-055

07-054



BOOK - PAGE
PLAT NUMBER

1 inch = 200 feet



NOTE: Distance, bearings and radius values are approximate. User needs to refer to the recorded legal descriptions for exact bearing and distances. For cadastral or technical information see the dedicated plat and/or legal descriptions in recorded documents.



Last update: 2/2/2023

SE Quarter

Section 29

3N 1E

S L B & M

Tax ID Prefix

07 - 055

Sheet 3 of 4

07-055

07-055

07-054

07-055

07-054

07-076

07-076

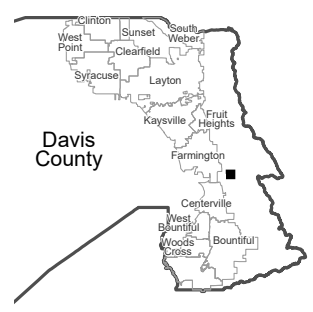
07-071

07-055-010
UNITED STATES
OF AMERICA
1414.C



BOOK - PAGE
PLAT NUMBER

1 inch = 200 feet



NOTE: Distance, bearings and radius values are approximate. User needs to refer to the recorded legal descriptions for exact bearing and distances. For cadastral or technical information see the dedicated plat and/or legal descriptions in recorded documents.



Last update: 2/2/2023

SW Quarter
Section 29
3N 1E

S L B & M

Tax ID Prefix

07 - 055

Sheet 4 of 4

07-057

07-055

07-055

N89°47'10"E
2616.64'

N0°41'00"W
2652.43'

N0°27'50"W
2647.33'

07-058

07-055

07-071

07-076

07-076

N89°33'40"E
2624.61'

N0°41'40"W
2647.67'

Little Valley Road

Little Valley Road

07-055-0036
SOP
ROCK PROPS LLC
0.36 A.C.

07-055-0041
SOP
ROCK PROPS LLC
0.34 A.C.

07-055-0034
SOP
ROCK PROPS LLC
1.16 A.C.

07-055-0035
WELCH, TERRY
E.S. O'DONOHUE
1.16 A.C.
1122 S

07-055-0044
BAKER, JONATHAN
ALLEN & WELLS
1.12 A.C.
1126 S

1. 07-055-0042-ARMSTRONG, GLORIA 1.345 A.C.

07-055-0029
DAVEYSON, RICHARD
S. DONALD
2.014 A.C.

07-055-0018
ARMSTRONG, GLORIA
1.21 A.C.
1150 S

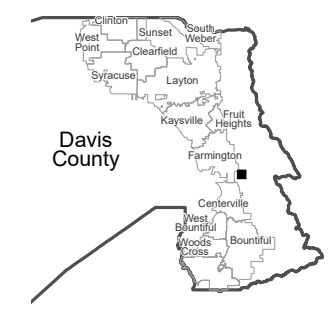
07-055-0045
ARMSTRONG, GLORIA
2.014 A.C.

07-055-0009
ARMSTRONG, GLORIA
2.0 A.C.



BOOK - PAGE
PLAT NUMBER

1 inch = 200 feet



NOTE: Distance, bearings and radius values are approximate. User needs to refer to the recorded legal descriptions for exact bearing and distances. For cadastral or technical information see the dedicated plat and/or legal descriptions in recorded documents.



Last update: 2/2/2023