

Block 15

Block 22

Block 21

Block 16

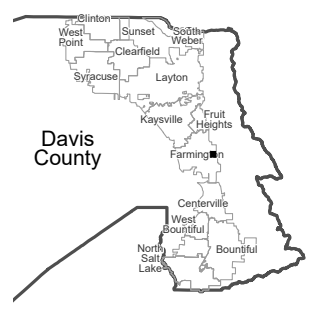
Tax ID Prefix  
**07-023**

**Part of Farmington Townsite**  
**Pt Section 18 & 19 T 3N R 1E Salt Lake Meridian**  
**Blocks 14 & 15 Plat "B"**  
**Farmington Townsite Svy**

BOOK - PAGE  
PLAT NUMBER



1 inch = 100 feet



NOTE: Distance, bearings and radius values are approximate. User needs to refer to the recorded legal descriptions for exact bearing and distances. For cadastral or technical information see the dedicated plat and/or legal descriptions in recorded documents.



Last update: 7/21/2023

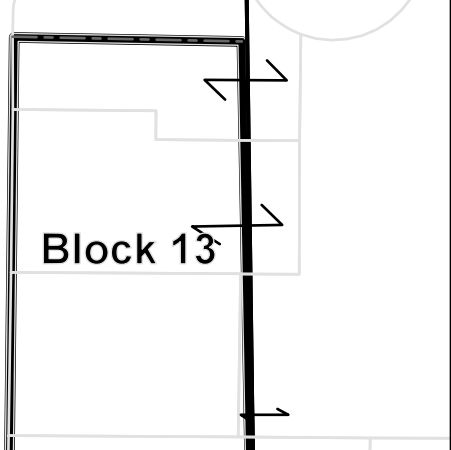
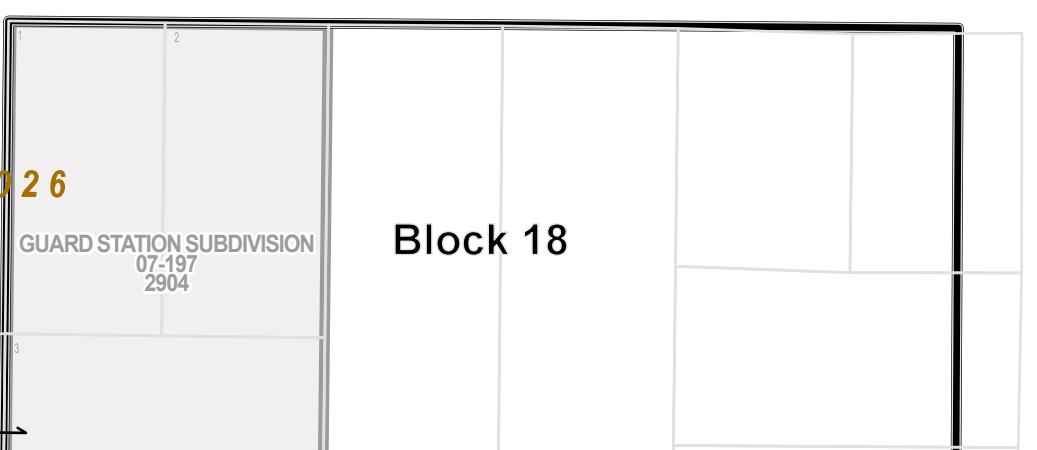
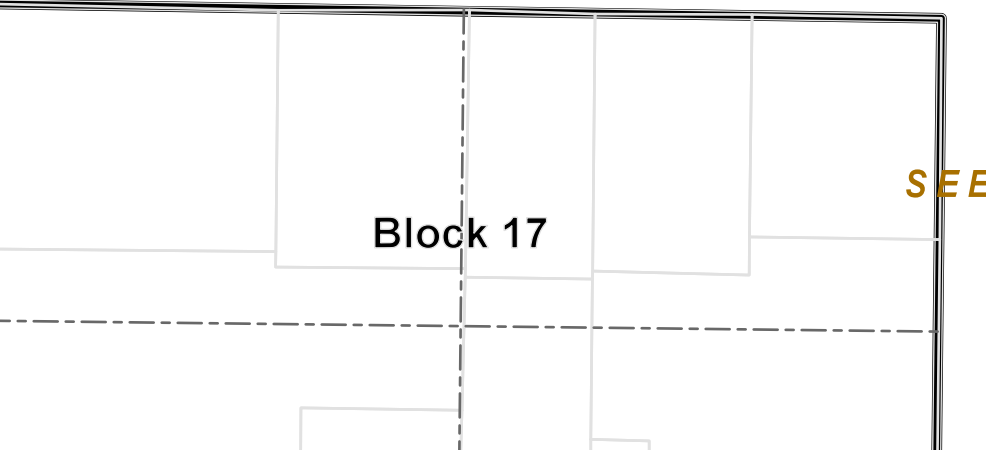
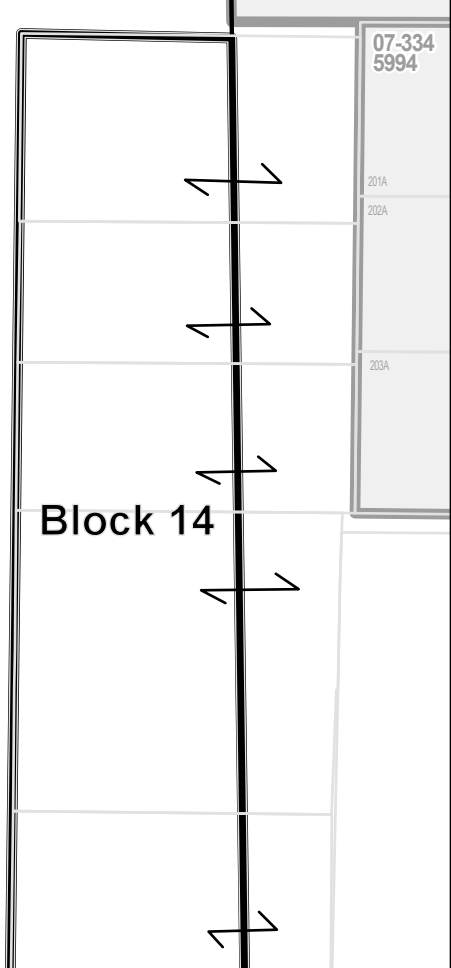
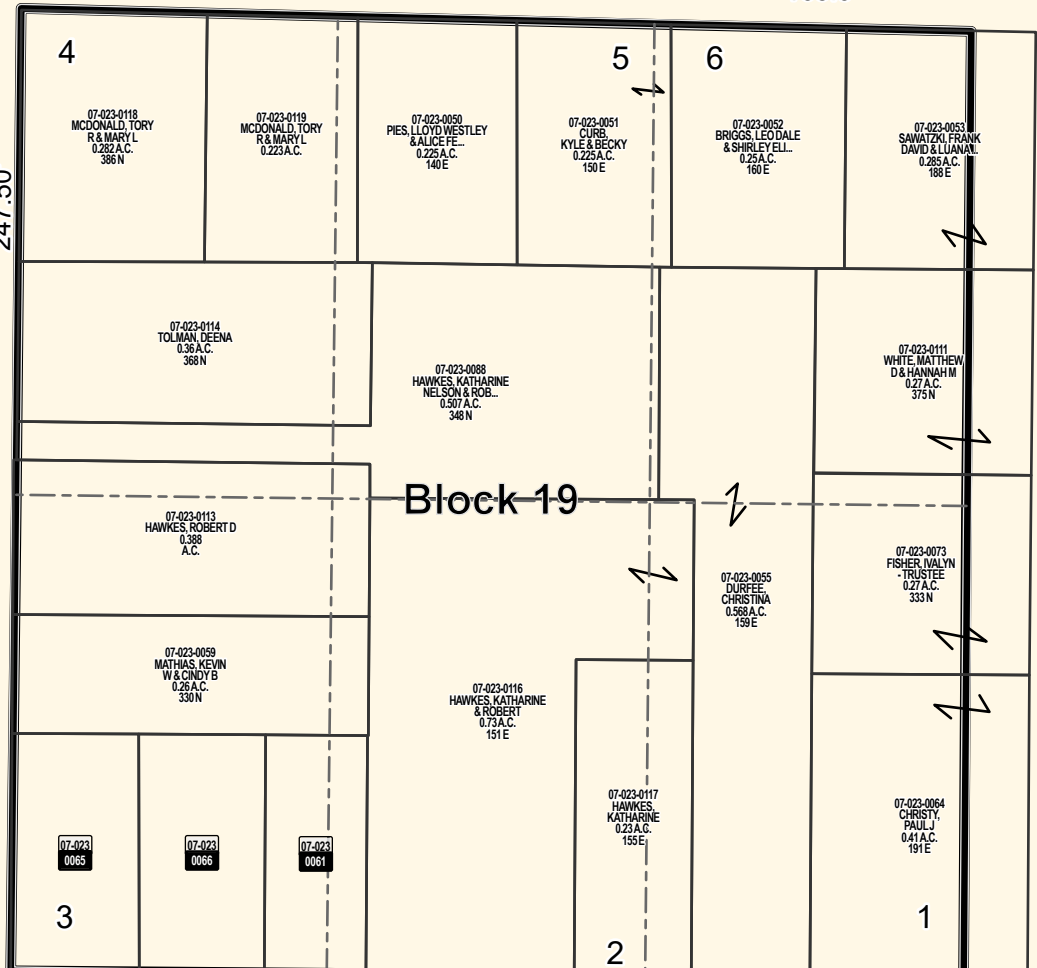
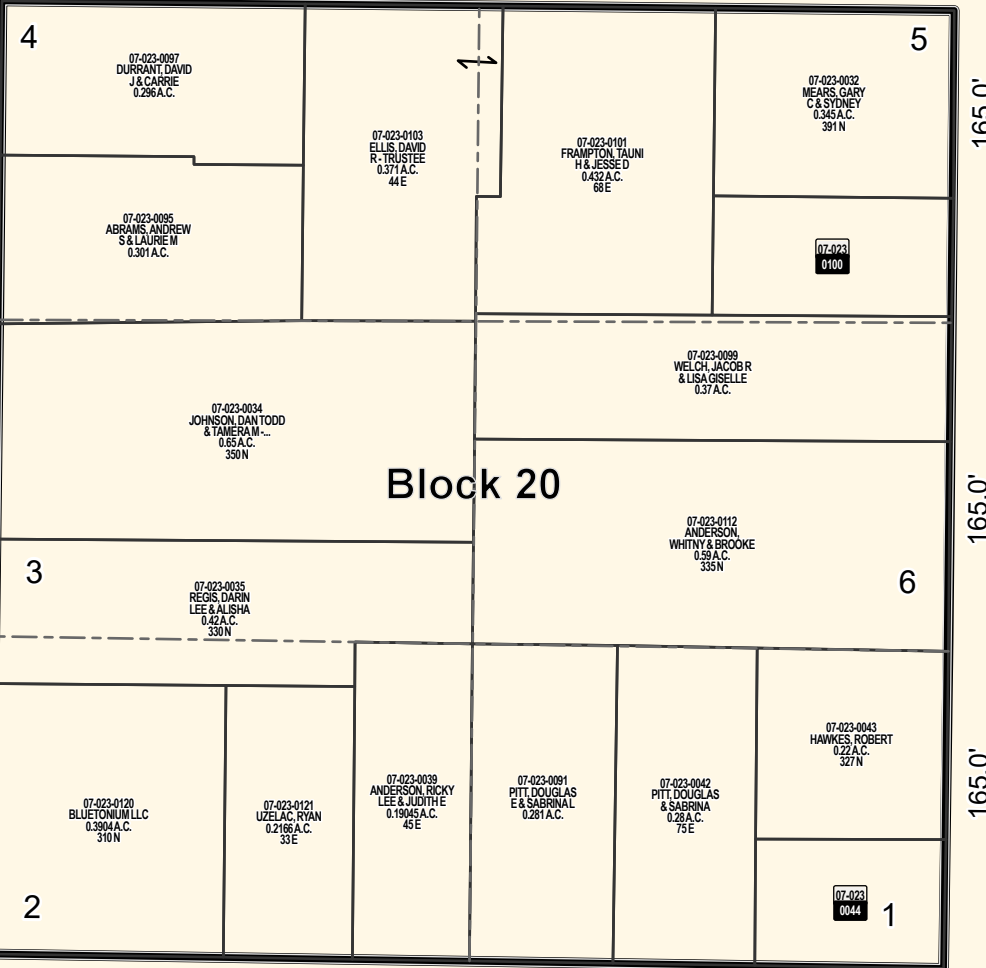
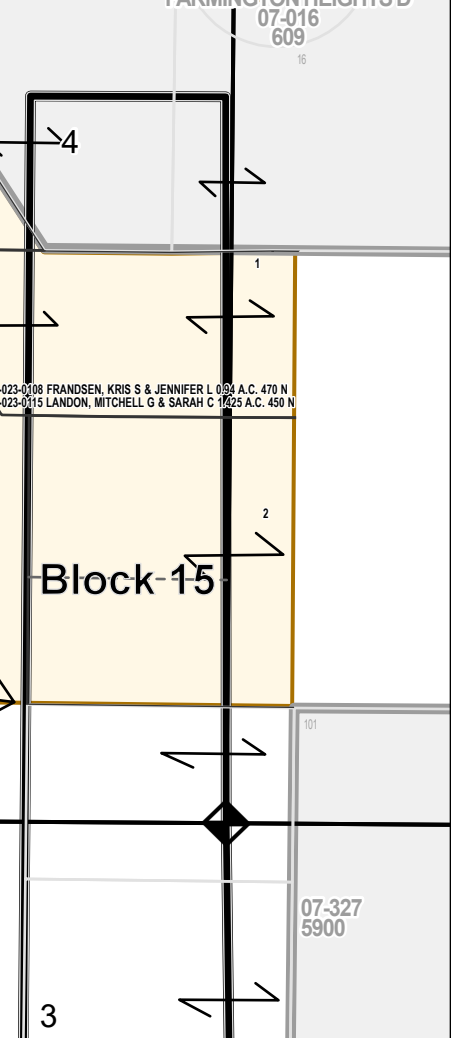
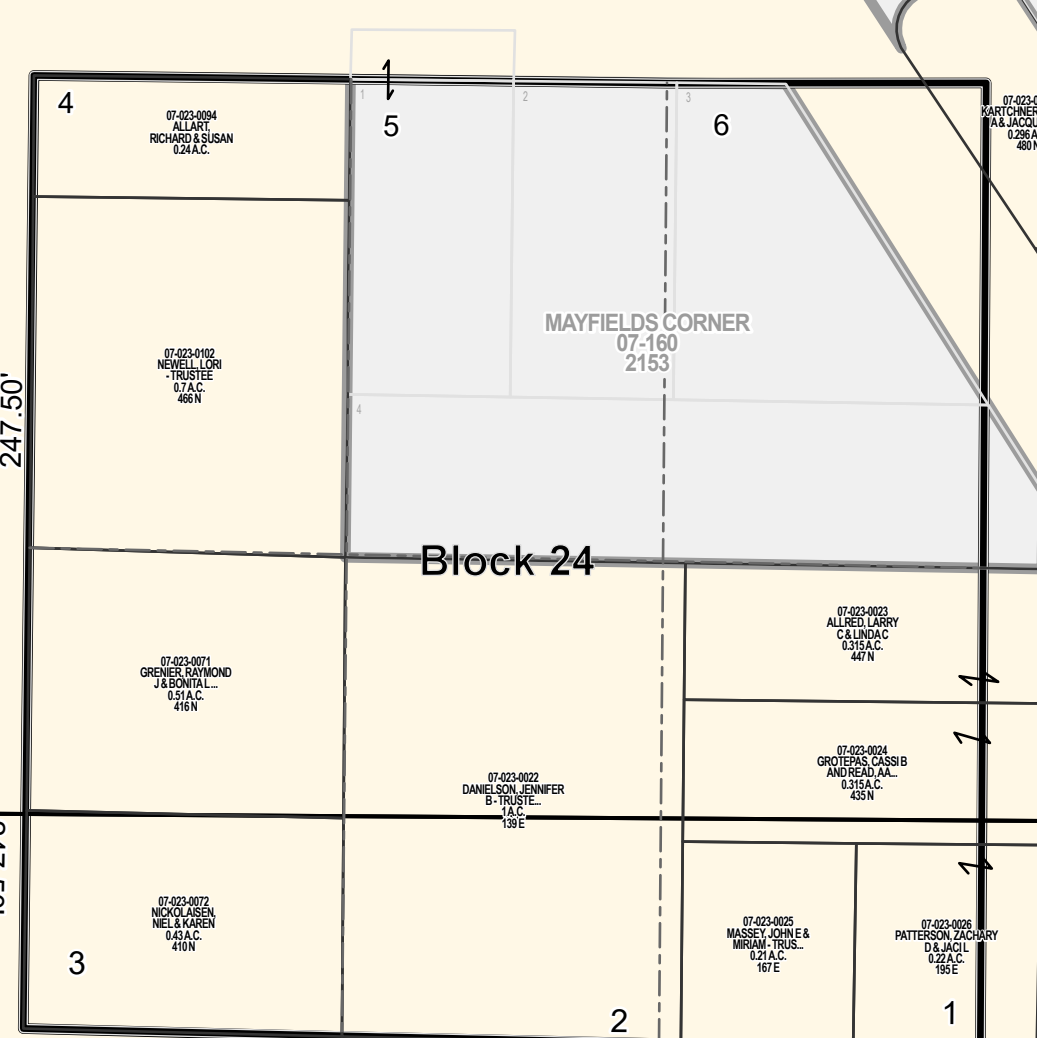
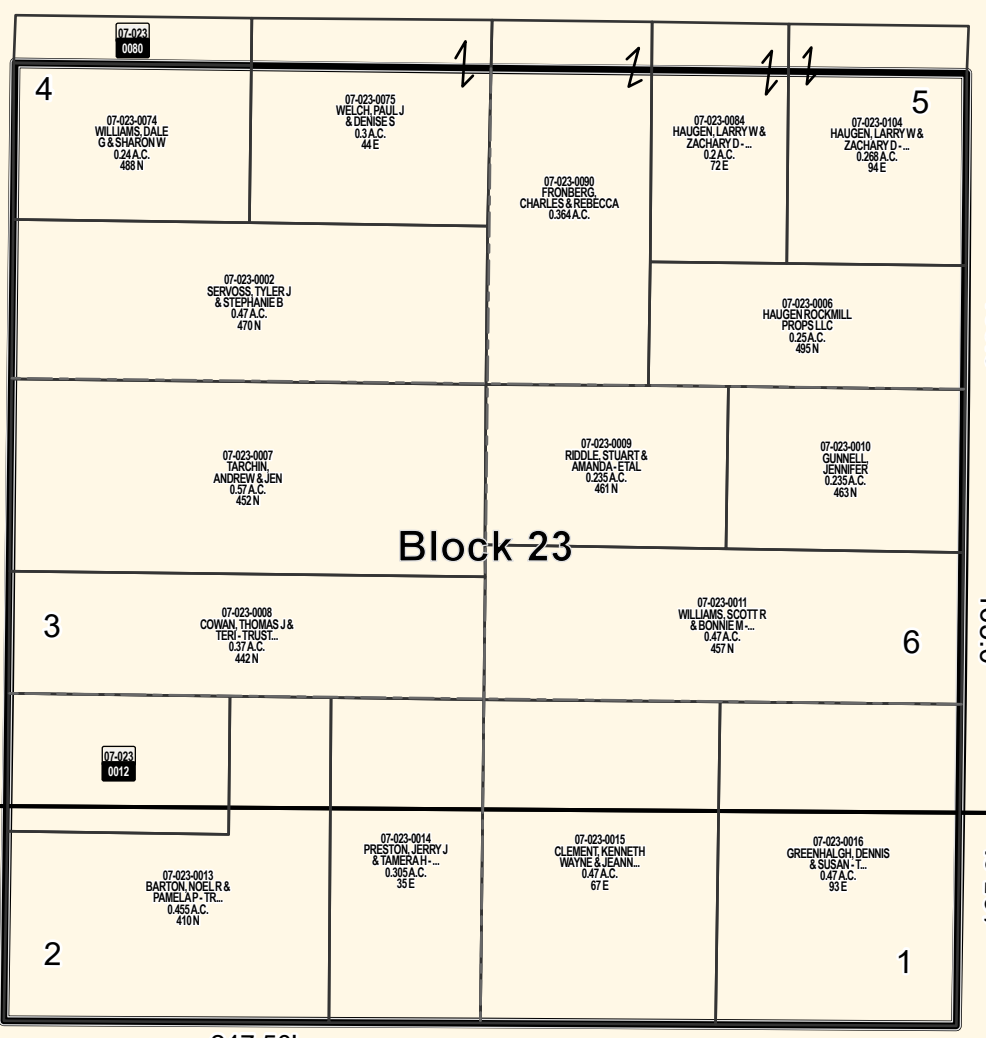
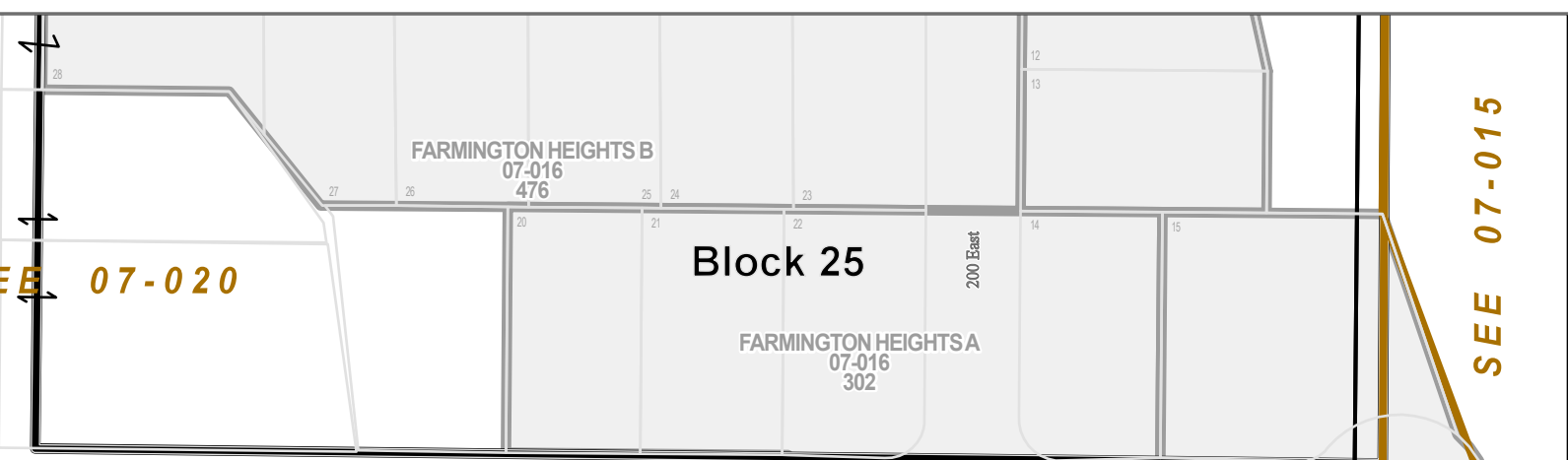
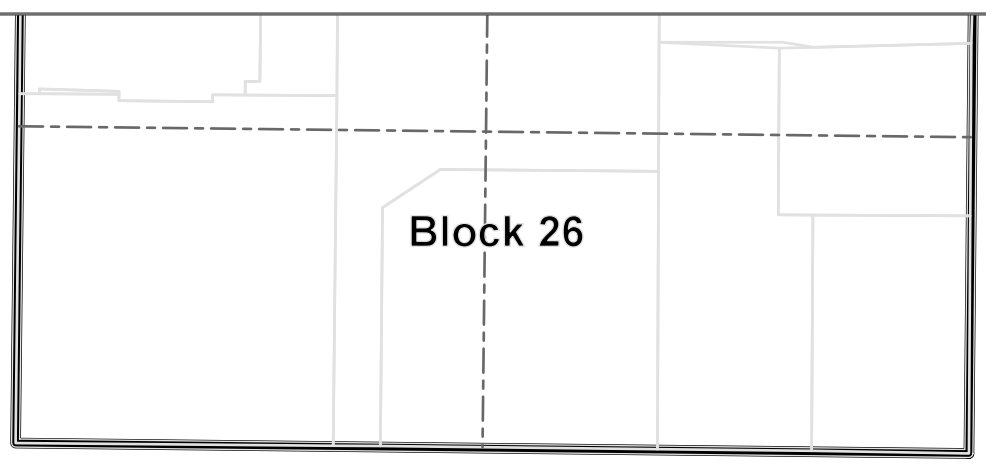
SEE 07-021

SEE 07-022

SEE 07-025

SEE 07-020

SEE 07-026



07-309  
5552

07-309  
5552

07-327  
5900

07-327  
5900

07-327  
5900

07-327  
5900

07-327  
5900

07-327  
5900

07-327  
5900

SEE 07-015

SEE 07-015

SEE 07-015

SEE 07-015

SEE 07-015

500 North

FARMINGTON HEIGHTS D  
07-016  
609

400 North

100 East

200 East

300 North

FARMINGTON HEIGHTS B  
07-016  
476

Block 25

FARMINGTON HEIGHTS A  
07-016  
302

Block 26

Block 23

Block 24

Block 15

Block 20

Block 19

Block 14

Block 17

Block 18

Block 13

GUARD STATION SUBDIVISION  
07-197  
2904

07-327  
5900

07-334  
5994

07-334  
5994

07-334  
5994

07-334  
5994

07-334  
5994

07-023-0004 WILLIAMS DALE G & SHARON W 0.24 A.C. 488 N  
07-023-0005 WELCH PAUL J & DENISE S 0.24 A.C. 41E  
07-023-0006 HAUGEN LARRY W & ZACHARY D 0.24 A.C. 172E  
07-023-0007 HAUGEN LARRY W & ZACHARY D 0.24 A.C. 9E  
07-023-0008 SPOOSE TYLER J & STERNEB 0.24 A.C. 47N  
07-023-0009 FRONBERG CHARLES S & REBECCA 0.38 A.C.  
07-023-0010 HAUGEN LARRY W & ZACHARY D 0.24 A.C. 46N  
07-023-0011 TASCION ANDREW & JEN 0.24 A.C. 45N  
07-023-0012 RIDDLE STUART & AMANDA L 0.24 A.C. 46N  
07-023-0013 GUNNEL JENNIFER 0.24 A.C. 46N  
07-023-0014 DOWN THOMAS J & ESTHER 0.24 A.C. 46N  
07-023-0015 WILLIAMS SCOTT R & BONNIE L 0.47 A.C. 47N  
07-023-0016 BANTON ROSE E & PAMELA P 0.45 A.C. 47N  
07-023-0017 PRESTON JERRY J & VANESSA L 0.35 A.C. 35E  
07-023-0018 CLEMENT KENNETH WAYNE & SPAN 0.47 A.C. 67E  
07-023-0019 GREENHALGH DENNIS & SUSAN L 0.47 A.C. 95E  
07-023-0020 GRENIER RAYMOND J & BONITA L 0.31 A.C. 46N  
07-023-0021 DANIELSON JENNIFER B TRUSTEE 0.19 E  
07-023-0022 NICKOLAISEN NIEL & ARIEN 0.43 A.C. 47N  
07-023-0023 MASSEY JOHN E & BRIGGS TRUSTEE 0.21 A.C. 15E  
07-023-0024 PATTERSON ZACHARY D & JACIL 0.22 A.C. 15E

07-023-0025 DURAND DAVID & CARRIE 0.29 A.C.  
07-023-0026 ELLIS DAVID R TRUSTEE 0.27 A.C. 44E  
07-023-0027 ABRAMS ANDREW S & LAUREN M 0.30 A.C.  
07-023-0028 FRAMPTON TAIN H & JESSE D 0.42 A.C. 68E  
07-023-0029 WELCH JACOB R & LISABELLE 0.24 A.C.  
07-023-0030 JOHNSON DAN TODD & JAMES M 0.55 A.C. 36N  
07-023-0031 ANDERSON WHITNEY BROOKE 0.38 A.C. 35N  
07-023-0032 REGIS CARON LEE & ALISHA 0.42 A.C. 35N  
07-023-0033 BLUETONUM LLC 0.20 A.C. 31N  
07-023-0034 LOZELAC RYAN 0.218 A.C. 33E  
07-023-0035 ANDERSON ROCKY LEE & JUDITH E 0.196 A.C. 9E  
07-023-0036 PIT DOUGLAS E & SARAH A 0.28 A.C. 75E  
07-023-0037 HAWKES ROBERT 0.22 A.C. 37N

07-023-0027 ALFRED LARRY CALINDAC 0.24 A.C. 46N  
07-023-0028 GROTERAS CASIB ANDREA S A 0.31 A.C. 45N  
07-023-0029 MASSEY JOHN E & BRIGGS TRUSTEE 0.21 A.C. 15E  
07-023-0030 PATTERSON ZACHARY D & JACIL 0.22 A.C. 15E

07-023-0031 MCCONNELL TORY R & MARY L 0.22 A.C. 38N  
07-023-0032 MCCONNELL TORY R & MARY L 0.22 A.C.  
07-023-0033 PRES LICHT WESTLEY & ALICE F 0.25 A.C. 14E  
07-023-0034 KYLE & BECKY 0.22 A.C. 15E  
07-023-0035 BRIGGS LEO DALE & BRIGGS LEO DALE 0.22 A.C. 15E  
07-023-0036 SWATZKI FRANK DAN & LILLIAN W 0.28 A.C. 18E  
07-023-0037 TOLMAN DEENA 0.24 A.C. 38N  
07-023-0038 HAWKES KATHARINE NELS & ROB 0.50 A.C. 34N  
07-023-0039 HAWKES KATHARINE NELS & ROB 0.28 A.C. 35N  
07-023-0040 MATIAS KEVIN W & CINDY D 0.26 A.C. 35N  
07-023-0041 HAWKES KATHARINE NELS & ROB 0.28 A.C. 15E  
07-023-0042 HAWKES KATHARINE NELS & ROB 0.28 A.C. 15E  
07-023-0043 FISHER WALYN TRUSTEE 0.24 A.C. 33N  
07-023-0044 FISHER WALYN TRUSTEE 0.24 A.C. 33N  
07-023-0045 FISHER WALYN TRUSTEE 0.24 A.C. 33N  
07-023-0046 FISHER WALYN TRUSTEE 0.24 A.C. 33N  
07-023-0047 FISHER WALYN TRUSTEE 0.24 A.C. 33N  
07-023-0048 FISHER WALYN TRUSTEE 0.24 A.C. 33N  
07-023-0049 FISHER WALYN TRUSTEE 0.24 A.C. 33N  
07-023-0050 FISHER WALYN TRUSTEE 0.24 A.C. 33N

07-023-0051 FISHER WALYN TRUSTEE 0.24 A.C. 33N  
07-023-0052 FISHER WALYN TRUSTEE 0.24 A.C. 33N  
07-023-0053 FISHER WALYN TRUSTEE 0.24 A.C. 33N  
07-023-0054 FISHER WALYN TRUSTEE 0.24 A.C. 33N  
07-023-0055 FISHER WALYN TRUSTEE 0.24 A.C. 33N  
07-023-0056 FISHER WALYN TRUSTEE 0.24 A.C. 33N  
07-023-0057 FISHER WALYN TRUSTEE 0.24 A.C. 33N  
07-023-0058 FISHER WALYN TRUSTEE 0.24 A.C. 33N  
07-023-0059 FISHER WALYN TRUSTEE 0.24 A.C. 33N  
07-023-0060 FISHER WALYN TRUSTEE 0.24 A.C. 33N

07-023-0061 FISHER WALYN TRUSTEE 0.24 A.C. 33N  
07-023-0062 FISHER WALYN TRUSTEE 0.24 A.C. 33N  
07-023-0063 FISHER WALYN TRUSTEE 0.24 A.C. 33N  
07-023-0064 FISHER WALYN TRUSTEE 0.24 A.C. 33N  
07-023-0065 FISHER WALYN TRUSTEE 0.24 A.C. 33N  
07-023-0066 FISHER WALYN TRUSTEE 0.24 A.C. 33N  
07-023-0067 FISHER WALYN TRUSTEE 0.24 A.C. 33N  
07-023-0068 FISHER WALYN TRUSTEE 0.24 A.C. 33N  
07-023-0069 FISHER WALYN TRUSTEE 0.24 A.C. 33N  
07-023-0070 FISHER WALYN TRUSTEE 0.24 A.C. 33N

07-023-0071 FISHER WALYN TRUSTEE 0.24 A.C. 33N  
07-023-0072 FISHER WALYN TRUSTEE 0.24 A.C. 33N  
07-023-0073 FISHER WALYN TRUSTEE 0.24 A.C. 33N  
07-023-0074 FISHER WALYN TRUSTEE 0.24 A.C. 33N  
07-023-0075 FISHER WALYN TRUSTEE 0.24 A.C. 33N  
07-023-0076 FISHER WALYN TRUSTEE 0.24 A.C. 33N  
07-023-0077 FISHER WALYN TRUSTEE 0.24 A.C. 33N  
07-023-0078 FISHER WALYN TRUSTEE 0.24 A.C. 33N  
07-023-0079 FISHER WALYN TRUSTEE 0.24 A.C. 33N  
07-023-0080 FISHER WALYN TRUSTEE 0.24 A.C. 33N

07-023-0081 FISHER WALYN TRUSTEE 0.24 A.C. 33N  
07-023-0082 FISHER WALYN TRUSTEE 0.24 A.C. 33N  
07-023-0083 FISHER WALYN TRUSTEE 0.24 A.C. 33N  
07-023-0084 FISHER WALYN TRUSTEE 0.24 A.C. 33N  
07-023-0085 FISHER WALYN TRUSTEE 0.24 A.C. 33N  
07-023-0086 FISHER WALYN TRUSTEE 0.24 A.C. 33N  
07-023-0087 FISHER WALYN TRUSTEE 0.24 A.C. 33N  
07-023-0088 FISHER WALYN TRUSTEE 0.24 A.C. 33N  
07-023-0089 FISHER WALYN TRUSTEE 0.24 A.C. 33N  
07-023-0090 FISHER WALYN TRUSTEE 0.24 A.C. 33N