

FARMINGTON HEIGHTS A

FARMINGTON

Tax ID Prefix

07-016

Plat ID: 302

Sheet 1 of 4

Year Recorded: 1959



Parcel ID

Lot Number

1 inch = 40 feet

NW 18 3N 1E 07-013	NE 18 3N 1E 07-012	
SW 18 3N 1E 07-012	SE 18 3N 1E 07-012	
NW 19 3N 1E 07-037	NE 19 3N 1E 07-024	NE 19 3N 1E 07-037

S L B & M

NOTE: Distance, bearings and radius values are approximate. User needs to refer to the recorded legal descriptions for exact bearing and distances. For cadastral or technical information, see the dedicated plat and or legal descriptions in recorded documents.



FARMINGTON HEIGHTS C

FARMINGTON

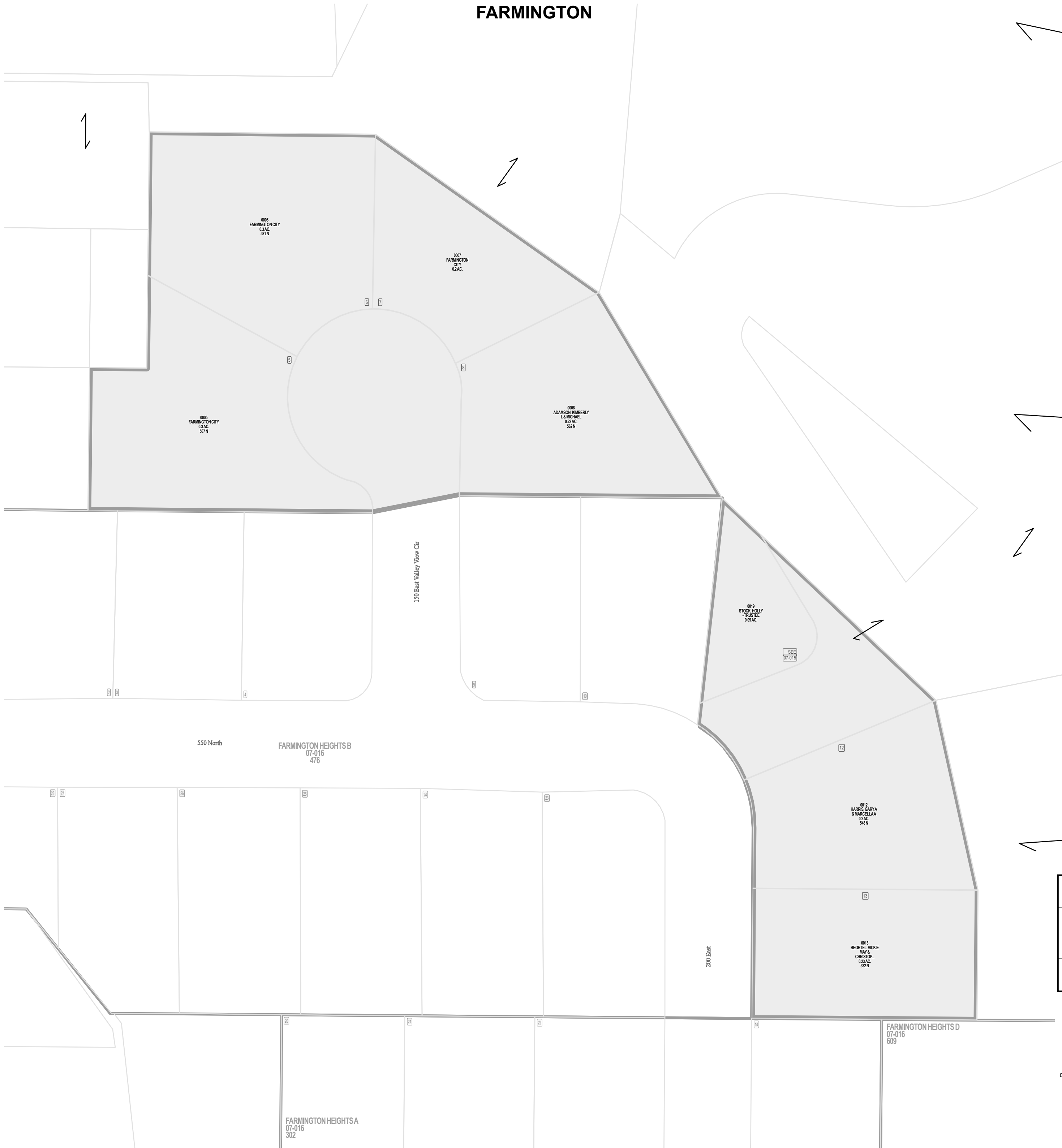
Tax ID Prefix

07-016

Plat ID: 350

Sheet 2 of 4

Year Recorded: 1961



Parcel ID

Lot Number

1 inch = 40 feet

NW 18 3N 1E 07-013	NE 18 3N 1E 07-012	
SW 18 3N 1E 07-012	SE 18 3N 1E 07-012	
NW 19 3N 1E 07-037	NE 19 3N 1E 07-024	NE 19 3N 1E 07-037

S L B & M

NOTE: Distance, bearings and radius values are approximate. User needs to refer to the recorded legal descriptions for exact bearing and distances. For cadastral or technical information, see the dedicated plat and or legal descriptions in recorded documents.



FARMINGTON HEIGHTS B

FARMINGTON

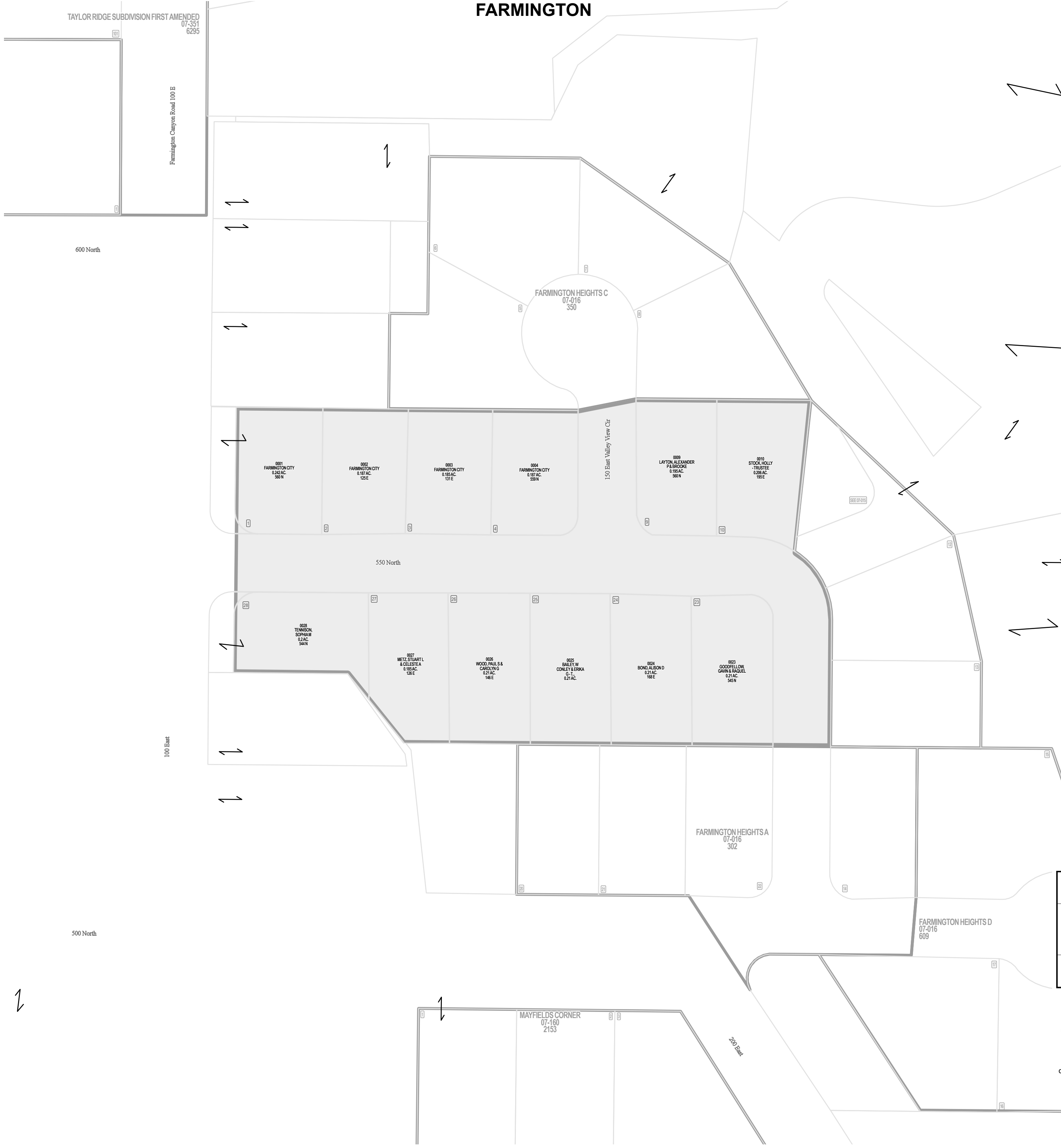
Tax ID Prefix

07-016

Plat ID: 476

Sheet 3 of 4

Year Recorded: 1960



Parcel ID

Lot Number

1 inch = 60 feet

NW 18 3N 1E 07-013	NE 18 3N 1E 07-012	
SW 18 3N 1E 07-012	SE 18 3N 1E 07-012	
NW 19 3N 1E 07-037	NE 19 3N 1E 07-024	NE 19 3N 1E 07-037

SLB & M

NOTE: Distance, bearings and radius values are approximate. User needs to refer to the recorded legal descriptions for exact bearing and distances. For cadastral or technical information, see the dedicated plat and or legal descriptions in recorded documents.



FARMINGTON HEIGHTS D

FARMINGTON

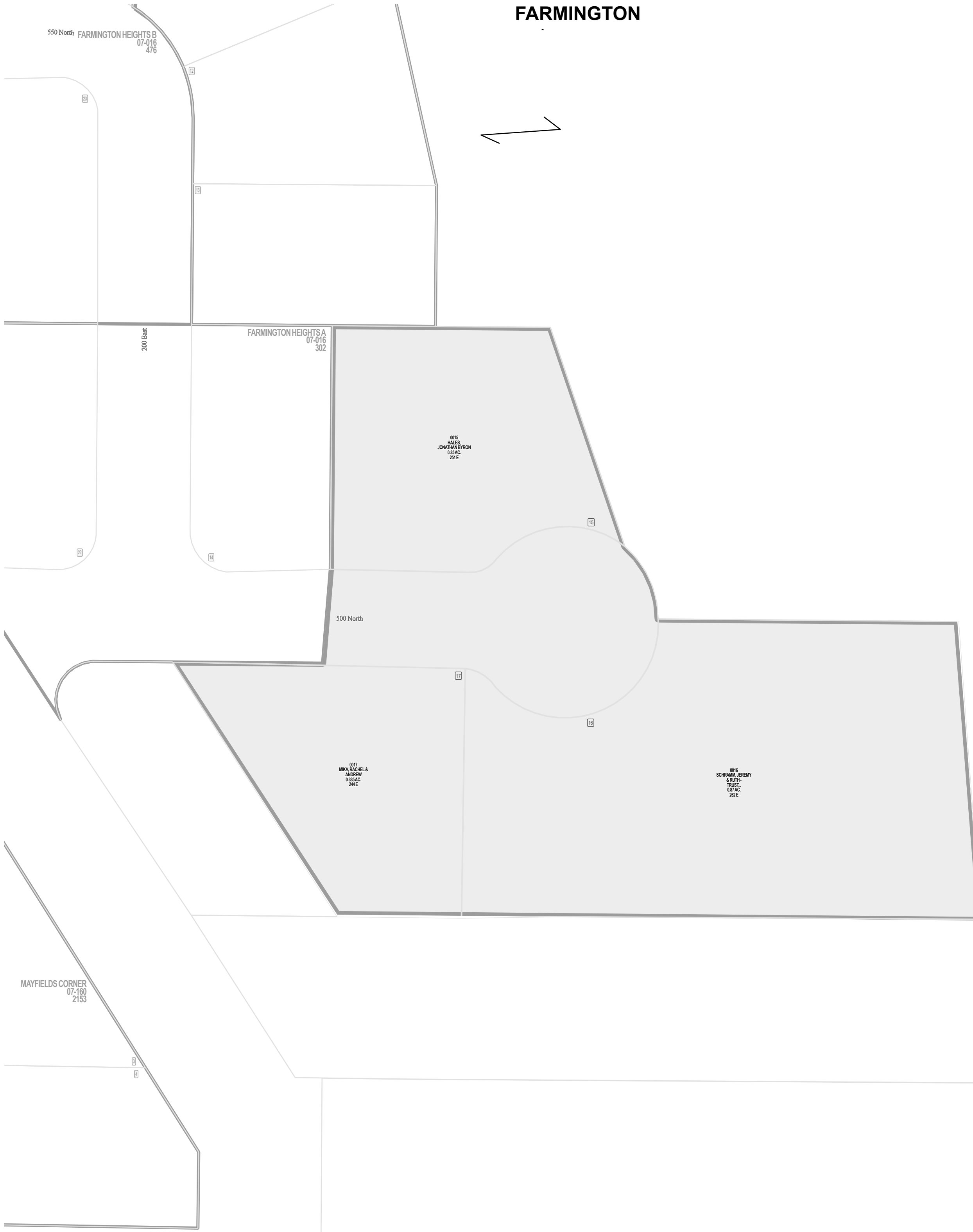
Tax ID Prefix

07-016

Plat ID: 609

Sheet 4 of 4

Year Recorded: 1967



Parcel ID

Lot Number

1 inch = 40 feet

NW 18 3N 1E 07-013	NE 18 3N 1E 07-012	
SW 18 3N 1E 07-012	SE 18 3N 1E 07-012	
NW 19 3N 1E 07-037	NE 19 3N 1E 07-024	NE 19 3N 1E 07-037

SLB & M

NOTE: Distance, bearings and radius values are approximate. User needs to refer to the recorded legal descriptions for exact bearing and distances. For cadastral or technical information, see the dedicated plat and or legal descriptions in recorded documents.

