

MOSS FARM ESTATES PLAT "E" SUBDIVISION

Tax ID Prefix

06-445

Plat ID: 6530

Sheet 1 of 1

Year Recorded: 2022

WEST BOUNTIFUL

700 West

MOSS FARM ESTATES PLAT "B"
06-247
4196

700 North

MOSS FARM ESTATES PLAT "D"
06-405
6008

551
DRAPER, MATTHEW &
MONIQUE, JESS.
0437 AC
87 W

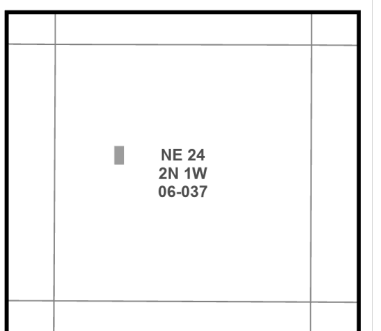
EGGETT ACRES
06-044
1022



Parcel ID

Lot Number

1 inch = 30 feet



NOTE: Distance, bearings and radius values are approximate. User needs to refer to the recorded legal descriptions for exact bearing and distances. For cadastral or technical information, see the dedicated plat and or legal descriptions in recorded documents.

