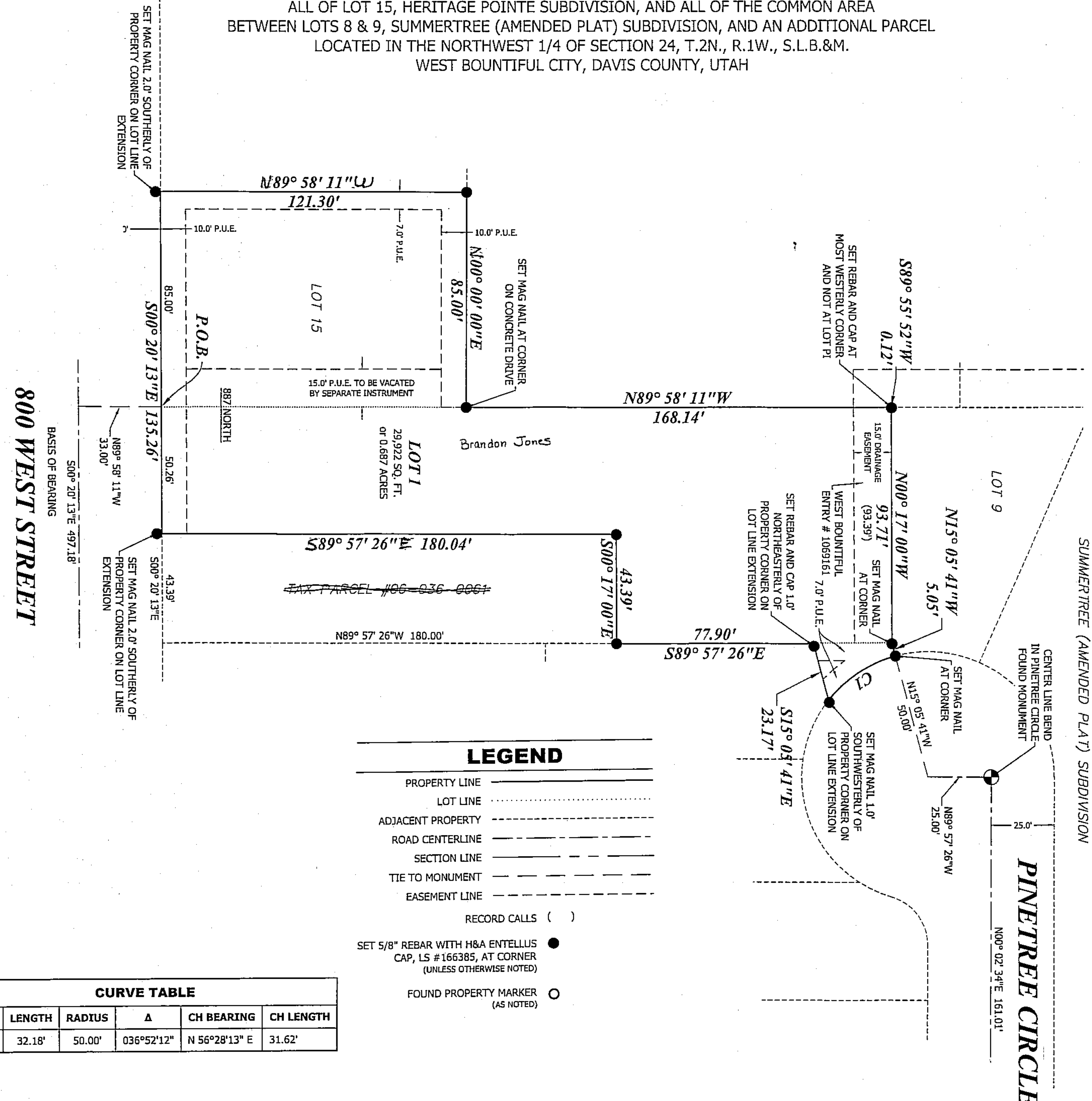


397
06

DIRTY DOG SUBDIVISION

ALL OF LOT 15, HERITAGE POINTE SUBDIVISION, AND ALL OF THE COMMON AREA
BETWEEN LOTS 8 & 9, SUMMERTREE (AMENDED PLAT) SUBDIVISION, AND AN ADDITIONAL PARCEL
LOCATED IN THE NORTHWEST 1/4 OF SECTION 24, T.2N., R.1W., S.L.B.&M.
WEST BOUNTIFUL CITY, DAVIS COUNTY, UTAH



- NOTES:**
1. ALL DIMENSIONS ARE IN US SURVEY FEET.
 2. EASEMENTS ARE 10.0 FEET WIDE FOR FRONT AND REAR YARDS AND 7.0 FEET SIDE YARDS, AS SHOWN, UNLESS OTHERWISE NOTED.
 3. APPROVAL OF THIS DEVELOPMENT PLAT BY WEST BOUNTIFUL CITY DOES NOT CONSTITUTE ANY REPRESENTATION AS TO THE ADEQUACY OF THE SUB-SURFACE SOIL CONDITIONS NOR THE LOCATION OR DEPTH OF GROUND WATER TABLES.
 4. P.U.E. DENOTES A PUBLIC UTILITY EASEMENT AND DRAINAGE EASEMENT.
 5. INDIVIDUAL PROPERTY OWNERS ARE RESPONSIBLE FOR SURFACE DRAINAGE FROM THEIR LOTS. THE CITY IS NOT RESPONSIBLE FOR DRAINAGE FROM PRIVATE PROPERTY. THE CITY WILL ENFORCE GRADING PROVISIONS TO THE BUILDING CODE.



181 North 200 West, Suite #4
Bountiful, UT 84010
Phone 801.298.2236
www.Entellus.com

PREFIX
06-397
LAST #
∞ 1



SCALE:
1" = 30'

DEVELOPMENT: DIRTY DOG SUBDIVISION
CITY: WEST BOUNTIFUL
LOTS: 1

NW 1/4 OF SEC. 24, T.2N., R.1W., S.L.B.&M. DAVIS COUNTY, UTAH
 SUBDIVISION AND DEVELOPMENT
 COMMON AREA BETWEEN LOTS 8 & 9
 SUMMERTREE (AMENDED PLAT) AND
 AN ADDITIONAL PARCEL

FILE #5941
R-07-27-18