

393
06

CURVE TABLE						
CURVE	LENGTH	RADIUS	DELTA	TANGENT	CHD BEARING	CHD LENGTH
C1	95.52'	180.00'	307.217'	45.91'	N74.3134°W	94.40'

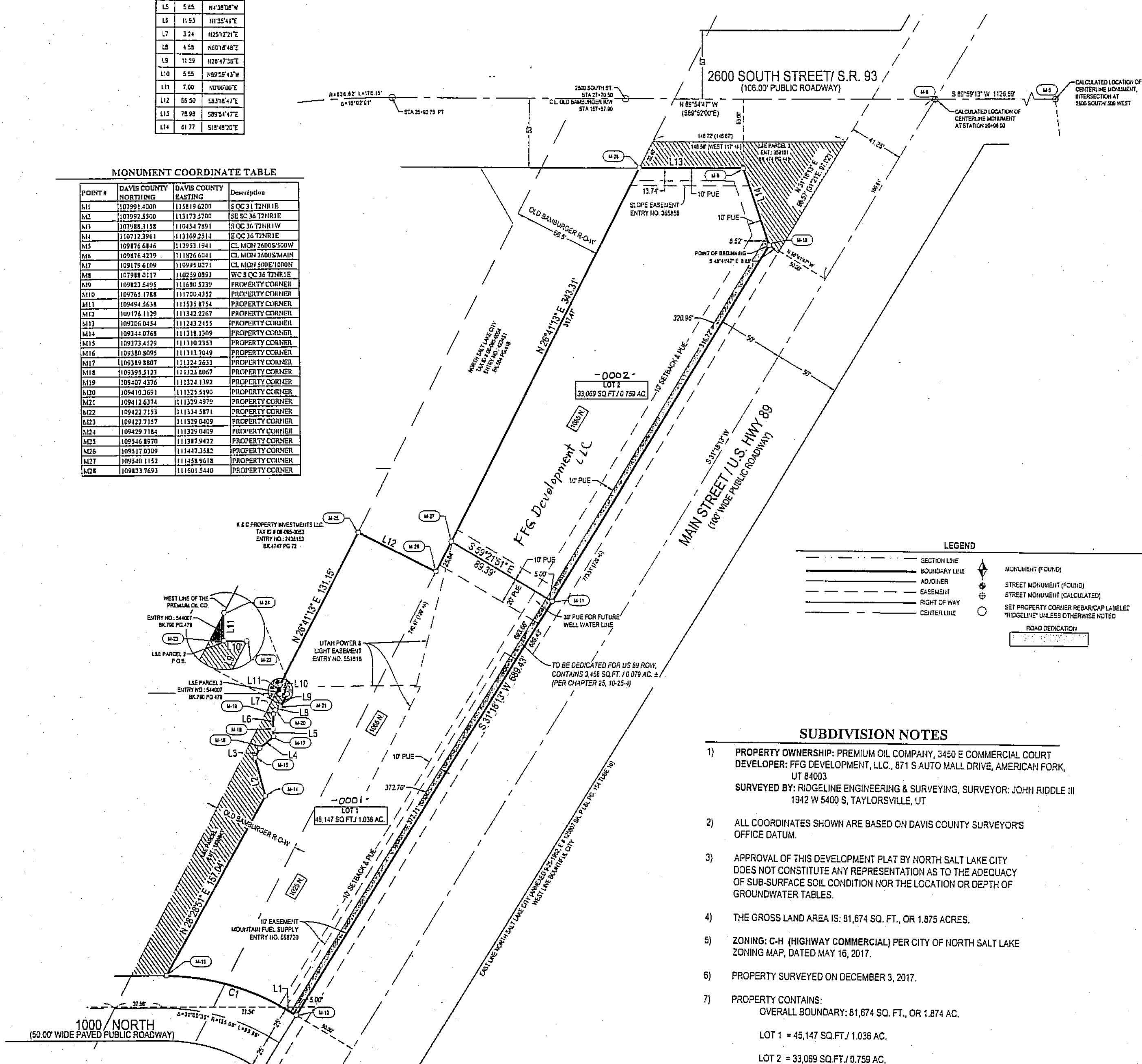
PARCEL LINE TABLE		
LINE	LENGTH	BEARING
L1	9.30	N59°19'25"W
L2	30.38	N15°03'50"W
L3	8.17	N25°07'50"E
L4	13.92	N49°19'57"E
L5	5.65	N4°38'02"W
L6	11.93	N1°35'49"E
L7	3.24	N25°12'21"E
L8	4.58	N50°18'48"E
L9	11.29	N26°47'38"E
L10	5.55	N59°58'43"W
L11	7.00	N0°00'00"E
L12	55.50	S83°18'47"E
L13	78.98	S89°54'47"E
L14	61.77	S18°48'20"E

MONUMENT COORDINATE TABLE			
POINT #	DAVIS COUNTY NORTHING	DAVIS COUNTY EASTING	Description
M1	107991.4000	115819.6200	S. Q.C. 31 T2N R1E
M2	107992.3500	115173.5700	S.E. Q.C. 36 T2N R1E
M3	107988.1158	110454.7891	S. Q.C. 36 T2N R1W
M4	110712.3961	113109.2514	S. Q.C. 36 T2N R1E
M5	109876.6826	112953.1941	CL. MON. 2600S/300W
M6	109876.4279	111826.6041	CL. MON. 2600S/300W
M7	109179.6109	110995.0271	CL. MON. 500E/1000N
M8	107988.0117	110229.0393	W.C. Q.C. 35 T2N R1E
M9	109823.5495	111630.5239	PROPERTY CORNER
M10	109765.1788	111700.4332	PROPERTY CORNER
M11	109494.5638	111333.8734	PROPERTY CORNER
M12	109176.1129	111342.2367	PROPERTY CORNER
M13	109206.0454	111243.2455	PROPERTY CORNER
M14	109144.0768	111318.1309	PROPERTY CORNER
M15	109173.4129	111310.2351	PROPERTY CORNER
M16	109380.8095	111313.7649	PROPERTY CORNER
M17	109389.8807	111322.2633	PROPERTY CORNER
M18	109395.5123	111323.8867	PROPERTY CORNER
M19	109407.4376	111324.1387	PROPERTY CORNER
M20	109410.3691	111325.5190	PROPERTY CORNER
M21	109412.6374	111329.4879	PROPERTY CORNER
M22	109422.7123	111334.5871	PROPERTY CORNER
M23	109422.7123	111329.0409	PROPERTY CORNER
M24	109429.7184	111329.0409	PROPERTY CORNER
M25	109546.8970	111381.9423	PROPERTY CORNER
M26	109517.6309	111447.3387	PROPERTY CORNER
M27	109540.1152	111458.9618	PROPERTY CORNER
M28	109823.7693	111601.5440	PROPERTY CORNER

PREMIUM BBQ - SUBDIVISION

A SUBDIVISION OF THE SOUTHEAST QUARTER OF SECTION 36, TOWNSHIP 2 NORTH, RANGE 1 WEST, SALT LAKE BASE AND MERIDIAN, NORTH SALT LAKE CITY, DAVIS COUNTY, UTAH

Premium Oil Company
Owns All Lots Not Marked



LEGEND	
	SECTION LINE
	BOUNDARY LINE
	ADJOINER
	EASEMENT
	RIGHT OF WAY
	CENTER LINE
	MONUMENT (FOUND)
	STREET MONUMENT (FOUND)
	STREET MONUMENT (CALCULATED)
	SET PROPERTY CORNER REBAR/CAP LABEL "RIDGELINE" UNLESS OTHERWISE NOTED
	ROAD DEDICATION

- ### SUBDIVISION NOTES
- PROPERTY OWNERSHIP: PREMIUM OIL COMPANY, 3450 E COMMERCIAL COURT DEVELOPER: FFG DEVELOPMENT, L.L.C., 871 S AUTO MALL DRIVE, AMERICAH FORK, UT 84003 SURVEYED BY: RIDGELINE ENGINEERING & SURVEYING, SURVEYOR: JOHN RIDDLE III 1942 W 5400 S, TAYLORSVILLE, UT
 - ALL COORDINATES SHOWN ARE BASED ON DAVIS COUNTY SURVEYOR'S OFFICE DATUM.
 - APPROVAL OF THIS DEVELOPMENT PLAT BY NORTH SALT LAKE CITY DOES NOT CONSTITUTE ANY REPRESENTATION AS TO THE ADEQUACY OF SUB-SURFACE SOIL CONDITION NOR THE LOCATION OR DEPTH OF GROUNDWATER TABLES.
 - THE GROSS LAND AREA IS: 81,674 SQ. FT., OR 1.875 ACRES.
 - ZONING: C-H (HIGHWAY COMMERCIAL) PER CITY OF NORTH SALT LAKE ZONING MAP, DATED MAY 16, 2017.
 - PROPERTY SURVEYED ON DECEMBER 3, 2017.
 - PROPERTY CONTAINS:
OVERALL BOUNDARY: 81,674 SQ. FT., OR 1.874 AC.
LOT 1 = 45,147 SQ. FT. / 1.038 AC.
LOT 2 = 33,069 SQ. FT. / 0.759 AC.
ROAD DEDICATION = 3,458 SQ. FT. / 0.079 AC.

PREFIX
06-393
LAST #
0002
N
SCALE:
1" = 60'

DEVELOPMENT: PREMIUM BBQ - SUBDIVISION
CITY: NORTH SALT LAKE LOTS: 1 & 2

SE 1/4 OF SEC. 36, T2N, R1W
S.L.M. DAVIS COUNTY, UTAH