

392

06

Rimini Properties LLC.  
Owns All Lots Not Marked

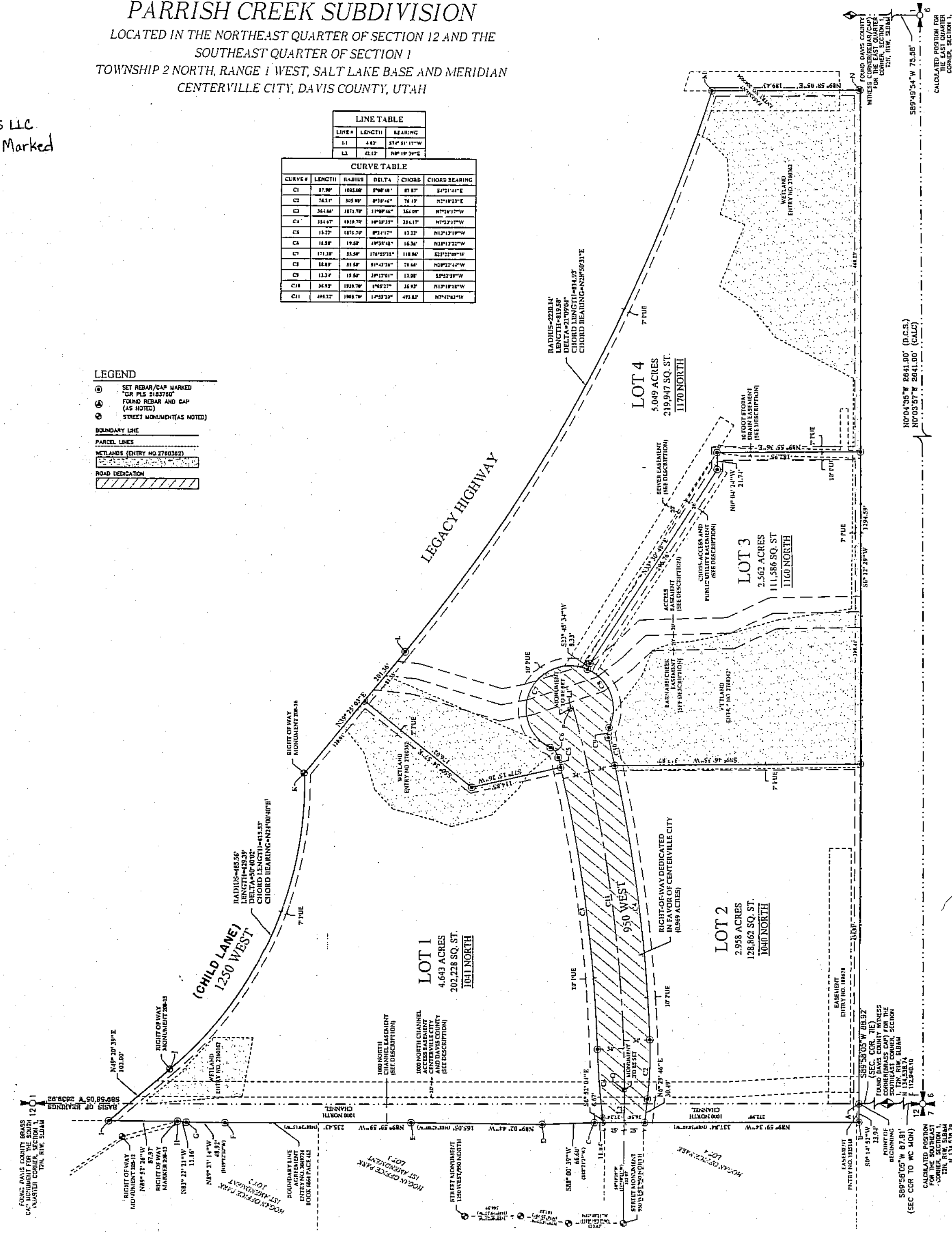
**PARRISH CREEK SUBDIVISION**  
 LOCATED IN THE NORTHEAST QUARTER OF SECTION 12 AND THE  
 SOUTHEAST QUARTER OF SECTION 1  
 TOWNSHIP 2 NORTH, RANGE 1 WEST, SALT LAKE BASE AND MERIDIAN  
 CENTERVILLE CITY, DAVIS COUNTY, UTAH

LINE TABLE				
LINE #	LENGTH	BEARING		
L1	4.62	S7°51'17"W		
L2	41.12	N0°18'39"E		

CURVE TABLE					
CURVE #	LENGTH	RADIUS	DELTA	CHORD	CHORD BEARING
C1	37.99	1052.00	3°56'48"	87.87	S7°14'41"E
C2	74.31	523.89	8°18'44"	74.13	N2°18'13"E
C3	34.44	1071.70	1°59'44"	34.09	N7°28'17"W
C4	34.47	1071.70	1°59'44"	34.17	N7°28'17"W
C5	13.22	1071.70	0°51'17"	13.22	N12°12'18"W
C6	18.89	19.82	4°33'44"	16.34	N31°12'22"W
C7	171.38	33.50	17°43'31"	118.94	S23°12'09"W
C8	88.82	33.50	8°43'38"	71.64	N0°22'42"W
C9	13.24	19.82	3°52'01"	13.08	S5°23'39"W
C10	34.92	1921.70	1°48'37"	34.92	N12°18'18"W
C11	49.22	1961.70	1°48'37"	49.22	N7°42'32"W

- LEGEND**
- ⊙ SET REBAR/CAP MARKED FOR PLS 2182760
  - ⊙ FOUND REBAR AND CAP (AS NOTED)
  - ⊙ STREET MONUMENT (AS NOTED)
- BOUNDARY LINE**
- PARCEL LINES**
- WETLANDS (ENTRY NO 2780382)**
- ROAD DEDICATION**



PREFIX  
 06-392  
 LAST #  
 0004



SCALE:  
 1" = 100'

**DEVELOPMENT: PARRISH CREEK SUBDIVISION**  
**CITY: CENTERVILLE LOTS: 1 THRU 4**

NE 1/4 OF SEC. 12, T2N, R1W  
 SE 1/4 OF SEC. 1, T2N, R1W  
 S.L.M. DAVIS COUNTY, UTAH

FILE #5853  
 R-12-29-17

PREPARED BY:  
**CIR**  
**ENGINEERING, L.L.C.**  
 3032 SOUTH 1030 WEST, SUITE 202  
 SLC, Utah 84119 - 801-949-6246