

386

06

TRAIL'S END SUBDIVISION

LOCATED IN THE ~~NORTH~~ **EAST** 1/4 OF SECTION 24, T.2N., R.1W., S.L.B.&M.
WEST BOUNTIFUL CITY, DAVIS COUNTY, UTAH
DECEMBER 2016

SALMON #06-037-0065

(S89° 41'E-DEED / S89° 41'W-SALMON 249.73')
N89° 32' 37"E 250.44'

Joshua Edwards

LOT 1
0.474 ACRES
548 NORTH

N89° 53' 23"W
215.00'

Holly K Draney
LOT 2
0.387 ACRES
528 NORTH

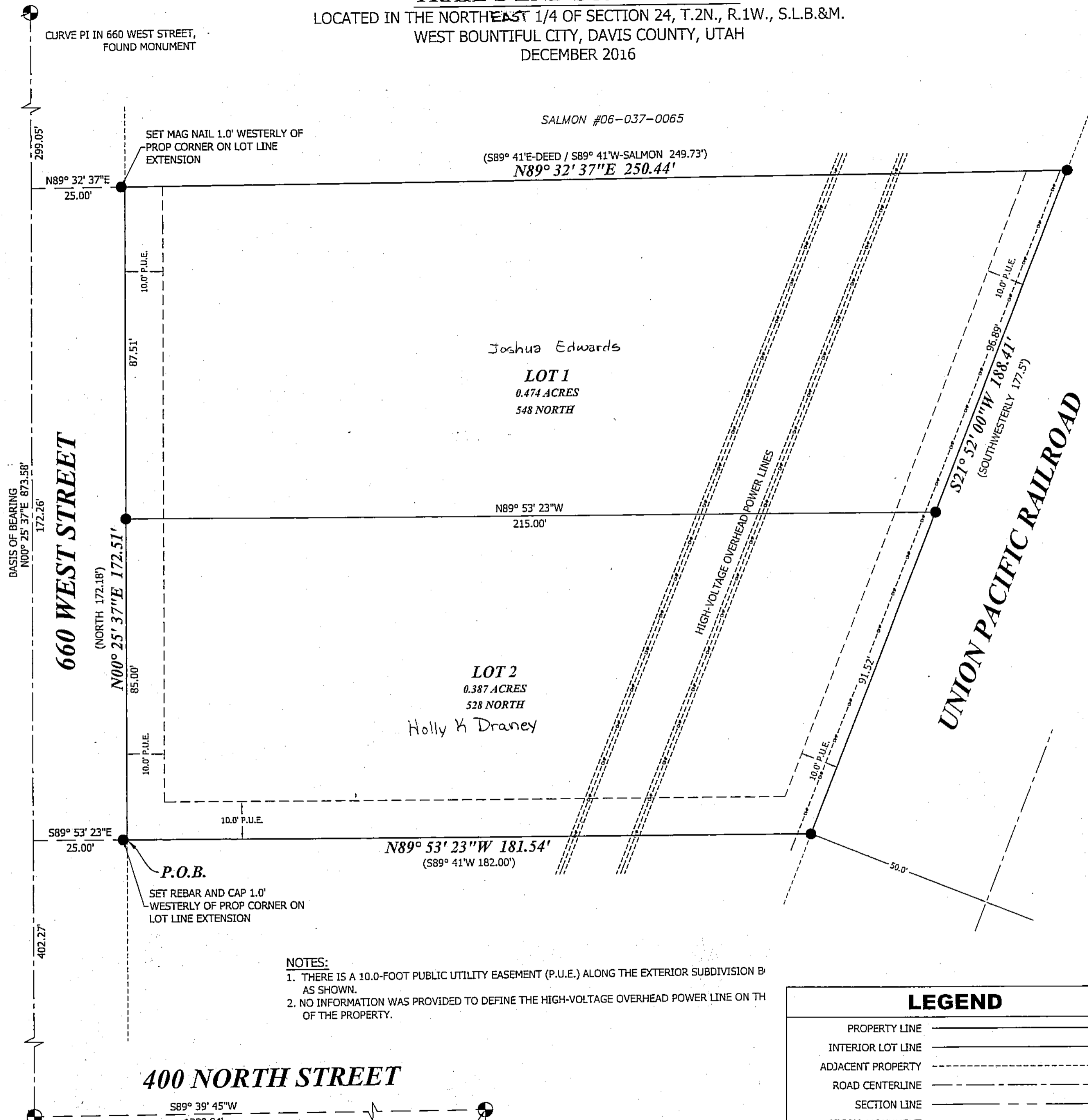
N89° 53' 23"W 181.54'
(S89° 41'W 182.00')

NOTES:

1. THERE IS A 10.0-FOOT PUBLIC UTILITY EASEMENT (P.U.E.) ALONG THE EXTERIOR SUBDIVISION BOUNDARY AS SHOWN.
2. NO INFORMATION WAS PROVIDED TO DEFINE THE HIGH-VOLTAGE OVERHEAD POWER LINE ON THE EAST SIDE OF THE PROPERTY.

LEGEND

PROPERTY LINE	—————
INTERIOR LOT LINE	—————
ADJACENT PROPERTY	- - - - -
ROAD CENTERLINE	—————
SECTION LINE	—————
TIE TO MONUMENT	- - - - -
RECORD CALLS ()	()
SET 5/8" REBAR WITH H&A ENTELLUS CAP, LS #166385, AT CORNER (UNLESS OTHERWISE NOTED)	●
FOUND PROPERTY MARKER (AS NOTED)	○



INTERSECTION OF 660 WEST AND 400 NORTH STREETS, FOUND MONUMENT

INTERSECTION OF 500 WEST AND 400 NORTH STREETS, (CALCULATED FROM W.B. MON. PLAT)



181 North 200 West, Suite #4
Bountiful, Utah 84010
Phone 801-298-2236
02/28/2017 JRC

PREFIX

06-386

LAST #

0002



SCALE:

1" = 20'

DEVELOPMENT: TRAIL'S END SUBDIVISION
CITY: WEST BOUNTIFUL LOTS: 1 & 2

NE 1/4 OF SEC. 24, T.2N, R.1W
S.L.M. DAVIS COUNTY, UTAH

FILE #5755
R-03-31-17

PROJ #1406001