

ALICE ACRES SUBDIVISION

WEST BOUNTIFUL

Tax ID Prefix

06-379

Plat ID: 5536

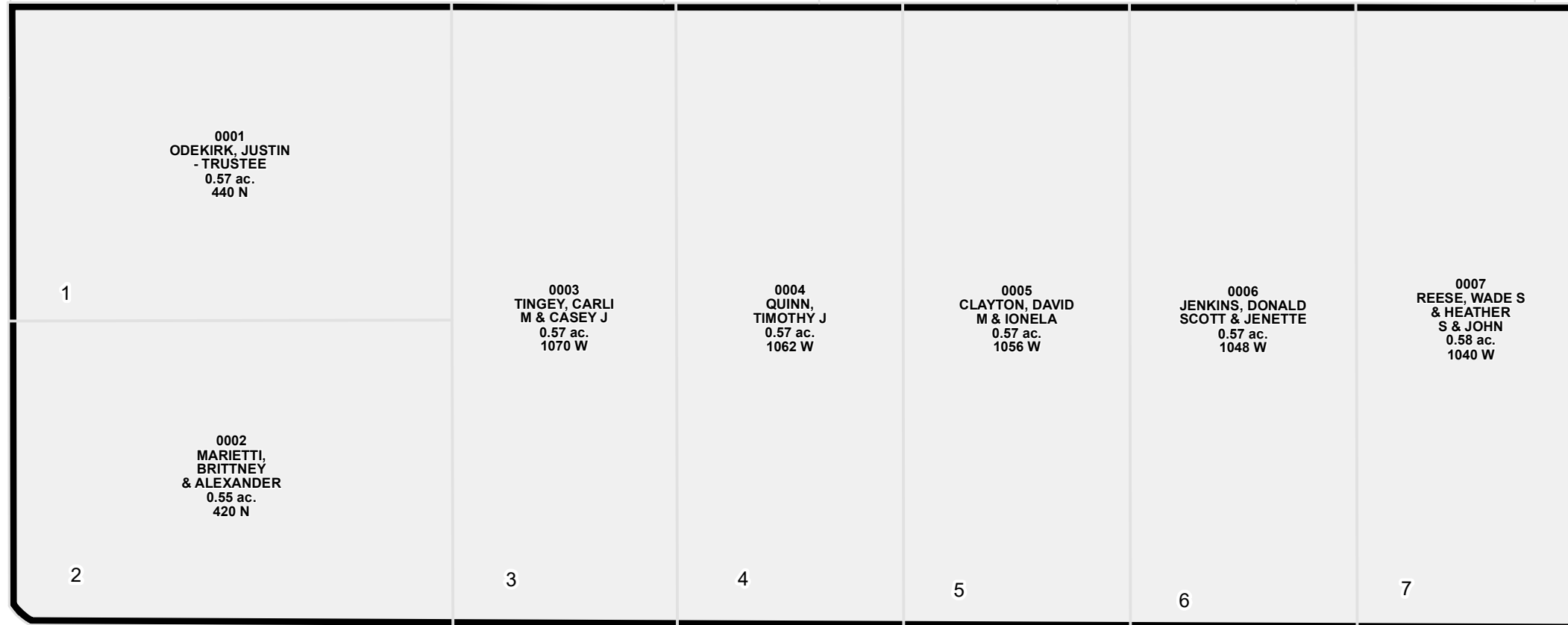
Sheet 1 of 1

Year Recorded: 2015

1100 West
Howard St

600 North

400 North



1 inch = 60 feet

SE 14 2N 1W 06027	SW 13 2N 1W 06013
NE 23 2N 1W 06032	NW 24 2N 1W 06036
SE 23 2N 1W 06034	SW 24 2N 1W 06038

S L B & M

NOTE: Distance, bearings and radius values are approximate. User needs to refer to the recorded legal descriptions for exact bearing and distances. For cadastral or technical information, see the dedicated plat and or legal descriptions in recorded documents.

