

TUMBLEWEED CONDOMINIUMS AMENDED

CENTERVILLE

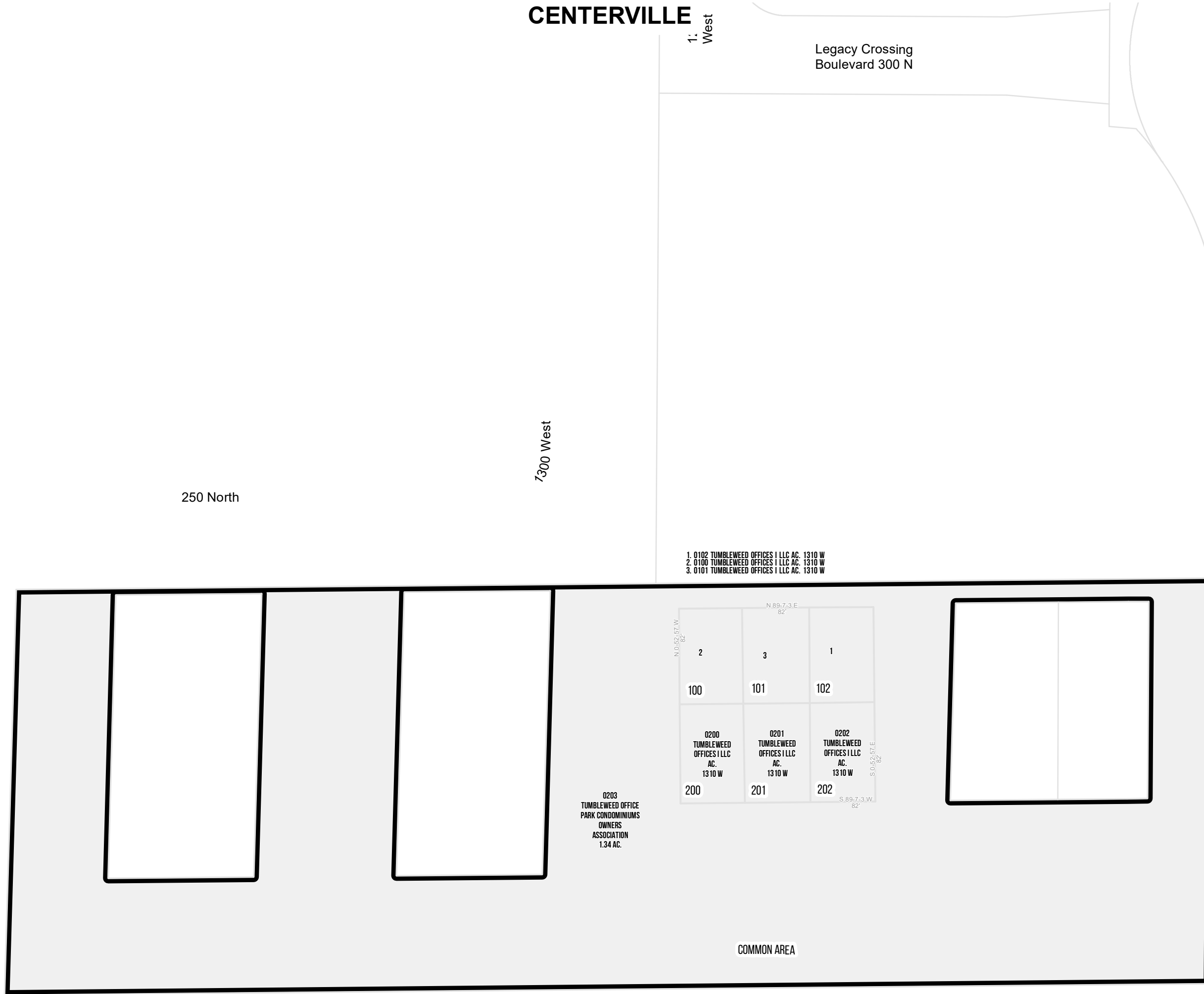
Tax ID Prefix

06-377

Plat ID: 5504

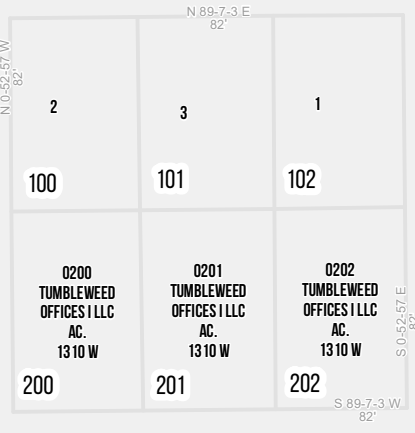
Sheet 1 of 1

Year Recorded: 2015



1. 0102 TUMBLEWEED OFFICES I LLC AC. 1310 W
 2. 0100 TUMBLEWEED OFFICES I LLC AC. 1310 W
 3. 0101 TUMBLEWEED OFFICES I LLC AC. 1310 W

0203
 TUMBLEWEED OFFICE
 PARK CONDOMINIUMS
 OWNERS
 ASSOCIATION
 1.34 AC.



COMMON AREA

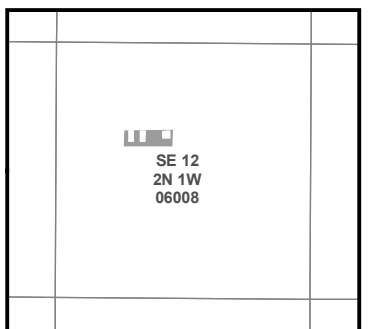
Legacy Lane 200 N

1250 West
Child Ln

200
North



1 inch = 40 feet



S L B & M

NOTE: Distance, bearings and radius values are approximate. User needs to refer to the recorded legal descriptions for exact bearing and distances. For cadastral or technical information, see the dedicated plat and or legal descriptions in recorded documents.

