

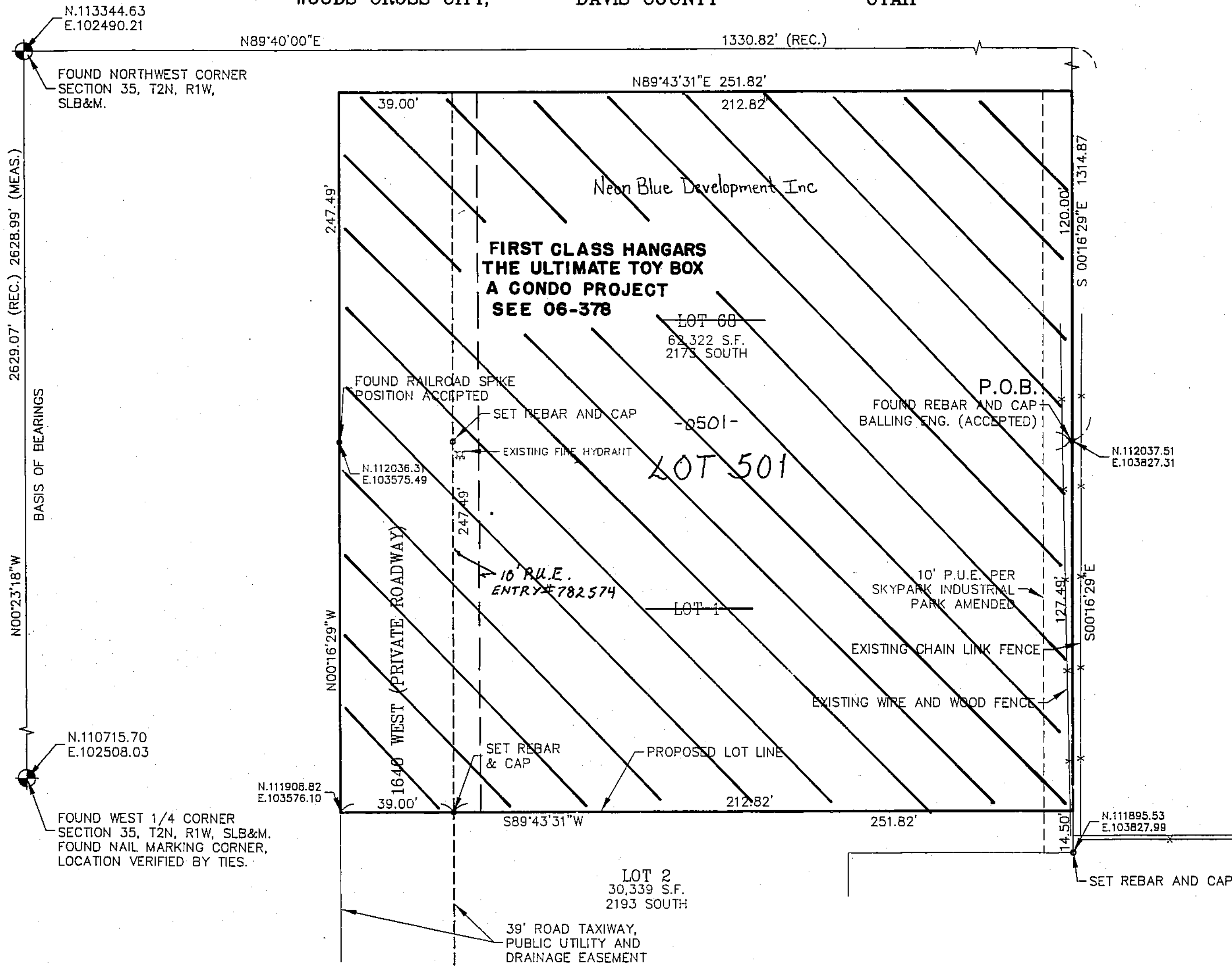
SKYPARK INDUSTRIAL PARK PHASE V

AMENDING LOT 68 OF SKYPARK INDUSTRIAL PARK AND EASEMENTS THEREIN AND
 LOT 1 OF SKYPARK INDUSTRIAL PARK PHASE IV AND EASEMENTS THEREIN
 A PORTION OF THE NORTHWEST 1/4 OF SECTION 35, T2N. R1W. SLB&M.
 WOODS CROSS CITY, DAVIS COUNTY UTAH

PREFIX 15
 06-371
 LAST #

N
 SCALE:
 1" = 30'

DEVELOPMENT: SKYPARK INDUSTRIAL PARK PHASE V
 CITY: WOODS CROSS LOTS: 501



371

06

Byrd & Associates L.L.C.
 Engineers & Land Surveyors

505 South Main Street
 Bountiful, Utah 84010
 Phone (801)-292-0400
 Fax (801)-292-8216

NW 1/4 SEC. 35, T 2N R. 1W
 S.L.M. DAVIS COUNTY, UTAH
 (AMENDING LOT 68, SKYPARK
 INDUSTRIAL PARK
 LOT 1, SKYPARK INDUSTRIAL
 PARK PH. IV &
 EASEMENTS THEREIN)

FILE #5406
 R-06-11-14