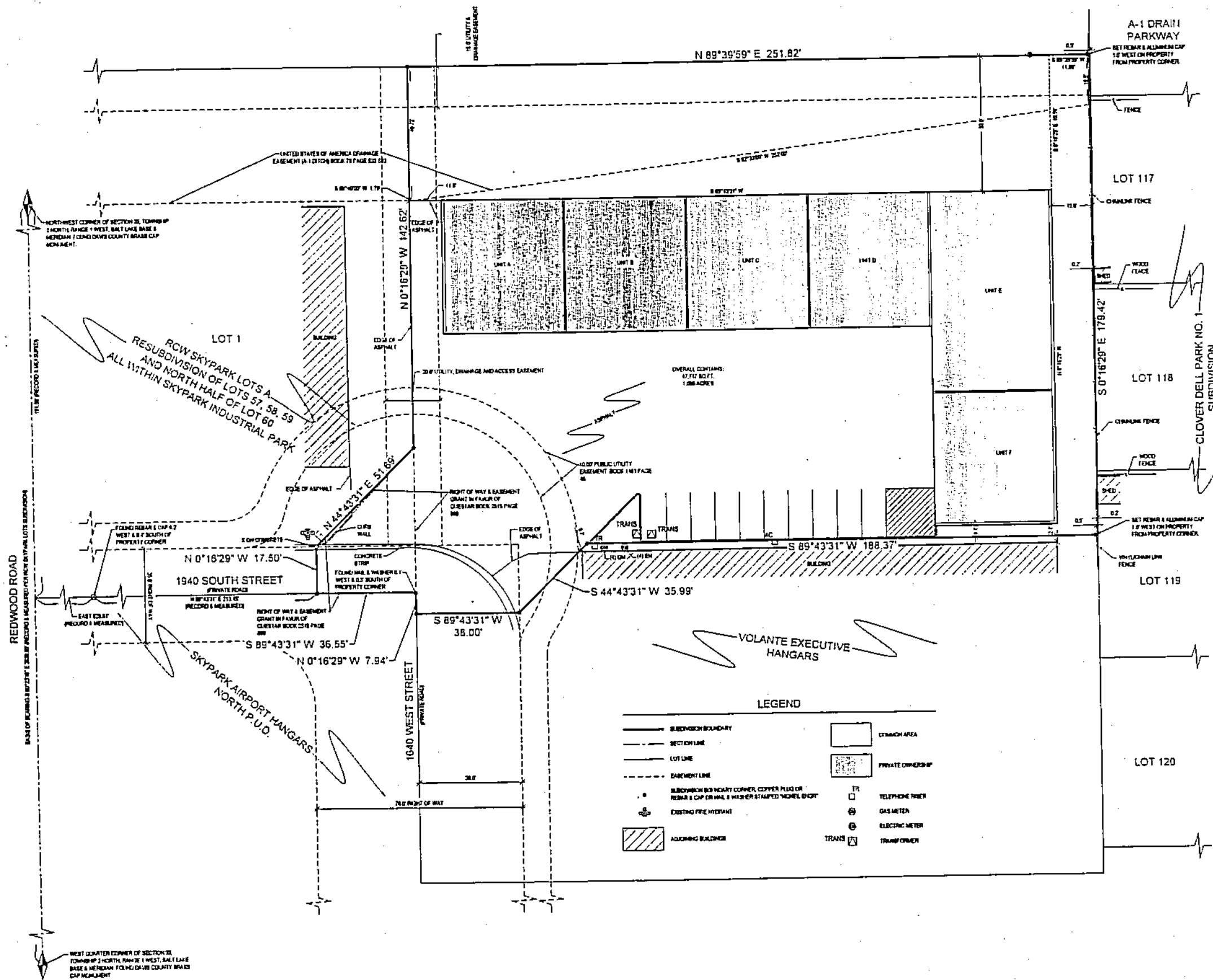


A 1 EXECUTIVE HANGARS

AMENDING LOT 2, RCW SKYPARK LOTS, A RESUBDIVISION OF LOTS 57, 58, 59 AND NORTH HALF OF LOT 60 ALL WITHIN SKYPARK INDUSTRIAL PARK

LOCATED IN THE NORTHWEST QUARTER OF SECTION 35,
TOWNSHIP 2 NORTH, RANGE 1 WEST, SALT LAKE BASE & MERIDIAN
1933 SOUTH 1640 WEST, WOODS CROSS, UTAH
A Condominium
Davis County

Volante LC Dwns All Units Not Marked



UNIT	OWNER	PID
A	David Y Knox	0001
B	Fixed Wing Aviation LLC	0002
C	Tuscany Cove 0305 LLC	0003
D	Harrington and Company	0004
E		0005
F		0006
Common Area	A1 Executive Hangars Owners Assoc.	0007

PREPARED BY:
McNEIL ENGINEERING™
Economic and Sustainable Design. Professionalism You Trust and Trust.
4410 South State Parkway, Suite 300, Sandy, Utah 84070 801.333.7700 mcneilengineering.com
Civil Engineering • Consulting & Landscape Architecture
Structural Engineering • Land Surveying & HDS

PREFIX

06-370

LAST #



SCALE:

1" = 40'

DEVELOPMENT: A 1 EXECUTIVE HANGARS
(A CONDOMINIUM)
CITY: WOODS CROSS UNITS: A THRU F & COMMON AREA

NW 1/4 SEC. 35, T 2N R 1W
S.L.M. DAVIS COUNTY, UTAH
AMD. LOT 2, RCW SKYPARK LOTS,
A RESUBD. OF LOTS 57, 58, 59 & 60
SKYPARK INDUSTRIAL PARK

FILE #5403
R-06-06-14

370

06