

# ONION STREET GARDENS SUBDIVISION

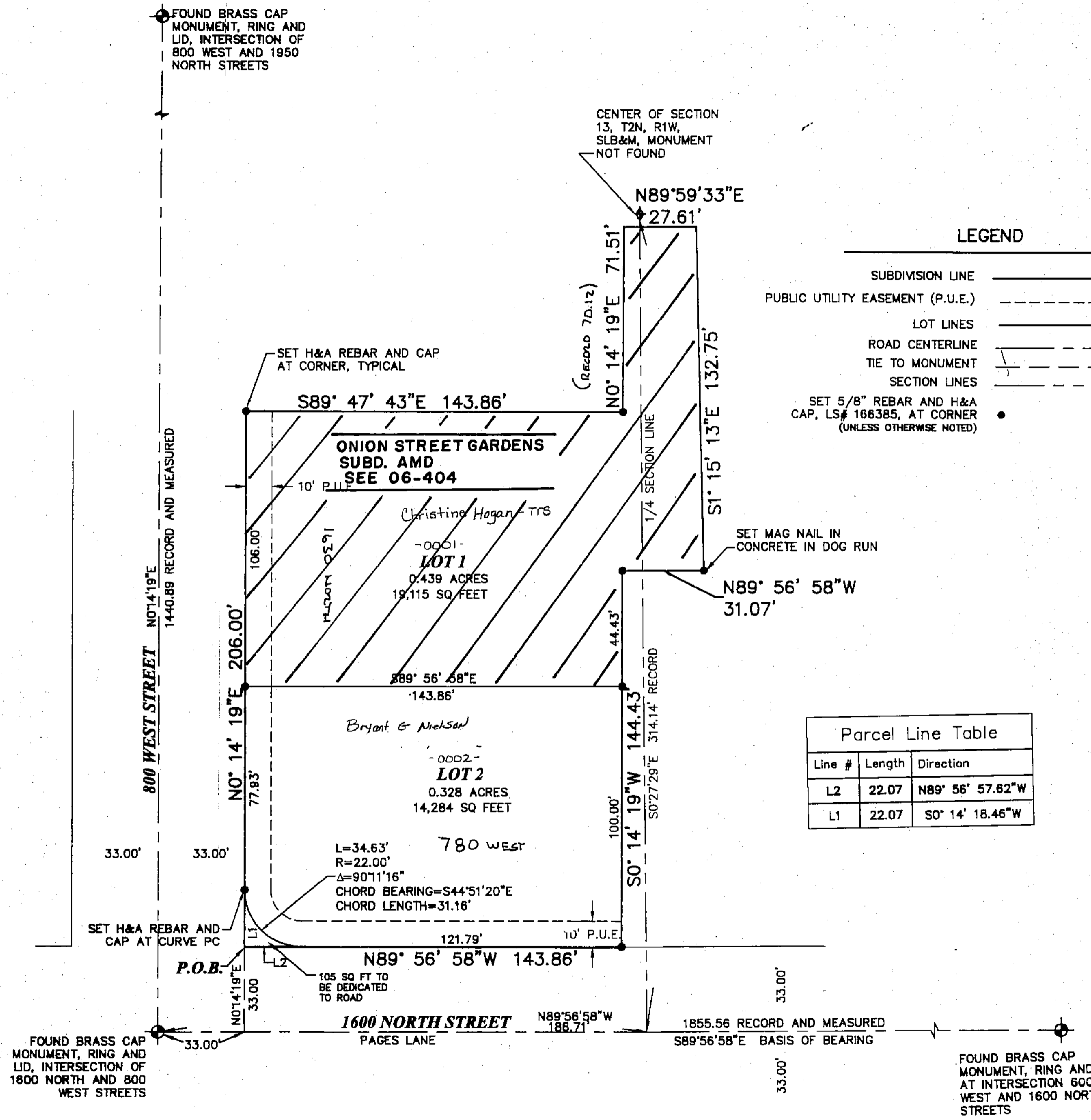
LOCATED IN THE SOUTH ~~HALF~~ OF SECTION 13  
TOWNSHIP 2 NORTH, RANGE 1 WEST SLB&M  
WEST BOUNTIFUL CITY, DAVIS COUNTY, UTAH

PREFIX 13  
06-367  
LAST #  
0002



SCALE:  
1" = 30'

DEVELOPMENT: ONION STREET GARDENS SUBDIVISION  
CITY: WEST BOUNTIFUL LOTS: 1 THRU 2



### LEGEND

- SUBDIVISION LINE \_\_\_\_\_
- PUBLIC UTILITY EASEMENT (P.U.E.) - - - - -
- LOT LINES \_\_\_\_\_
- ROAD CENTERLINE \_\_\_\_\_
- TIE TO MONUMENT \_\_\_\_\_
- SECTION LINES \_\_\_\_\_
- SET 5/8" REBAR AND H&A CAP, LS# 166385, AT CORNER (UNLESS OTHERWISE NOTED) ●

Parcel Line Table		
Line #	Length	Direction
L2	22.07	N89° 56' 57.62"W
L1	22.07	S0° 14' 18.46"W

367

06