

# Lodder Commercial Subdivision

Part of the Northeast Quarter of Section 25, T.2N., R.1W., S.L.B. & M.  
Bountiful City, Davis County, Utah

PREFIX  
06-364  
LAST #  
0002



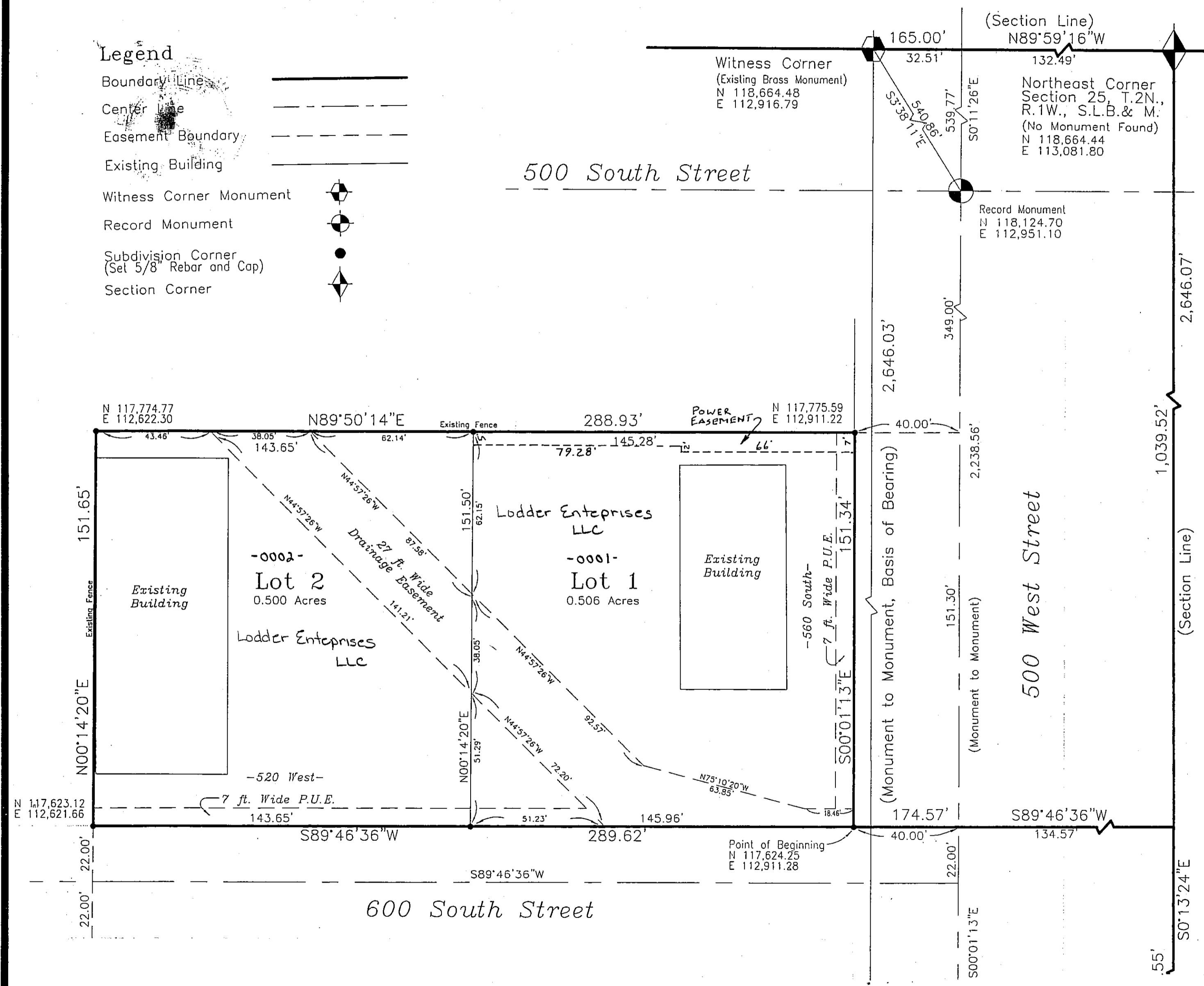
SCALE:  
1" = 30'

DEVELOPMENT: LODDER COMMERCIAL SUBDIVISION  
CITY: BOUNTIFUL LOTS: 1 THRU 2

NE 1/4 SEC. 25, T.2N R.1W  
S.L.M. DAVIS COUNTY, UTAH

FILE #5315  
R-08-22-13

- Legend**
- Boundary Line
  - Center Line
  - Easement Boundary
  - Existing Building
  - Witness Corner Monument
  - Record Monument
  - Subdivision Corner (Set 5/8" Rebar and Cap)
  - Section Corner



364

06

**Balling**  
Engineering