

FOXBORO NORTH PLAT 14
 A SUBDIVISION LOCATED IN THE SOUTHWEST QUARTER OF SECTION 34, TOWNSHIP 2 NORTH,
 RANGE 1 WEST, SALT LAKE BASE AND MERIDIAN, CITY OF NORTH SALT LAKE,
 DAVIS COUNTY, UTAH

*Foxboro Estates LLC
 Owns All Lots Not Marked*

PREFIX 3
06-355
 LAST #
 1410

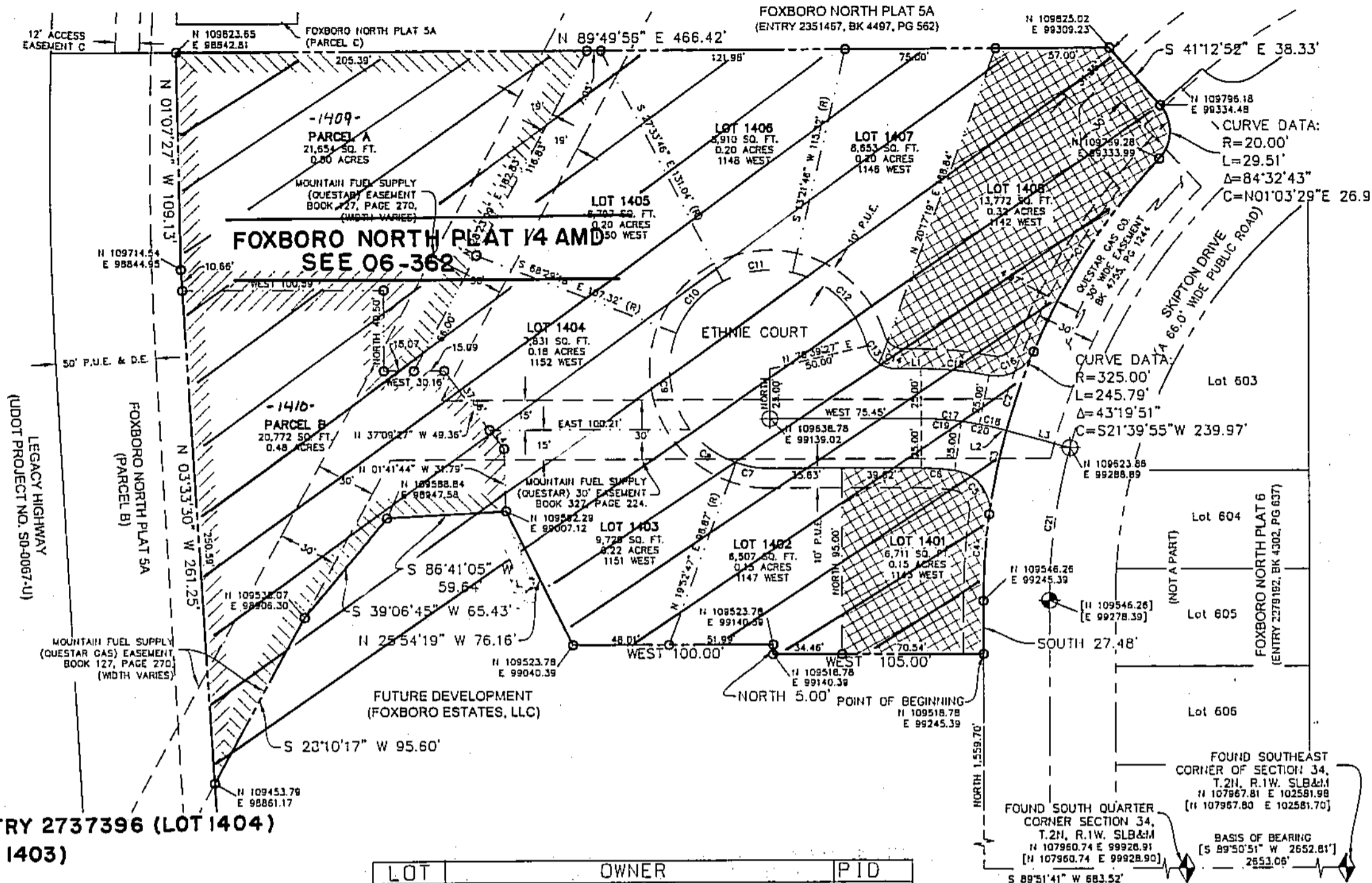
N

SCALE:
 1" = 60'

DEVELOPMENT: FOXBORO NORTH PLAT 14
 CITY: NORTH SALT LAKE LOTS: 1401 THRU 1408 & PARCELS A & B

SW 1/4 SEC. 34, T 2N R 1W
 S.L.M. DAVIS COUNTY, UTAH

FILE #5247
 R-02-08-13



EASEMENT ENTRY 2737396 (LOT 1404)
 2737397 (LOT 1403)

LOT	OWNER	PID
1401		1401
1402		1402
1403		1403
1404		1404
1405		1405
1406		1406
1407		1407
1408		1408
Parcel A North Salt Lake City		1409
Parcel B North Salt Lake City		1410

LINE	LENGTH	BEARING
L1	12.21	WEST
L2	2.85	S 74°35'17" E
L3	33.00	S 74°35'17" E
L4	11.80	N 37°09'27" W

CURVE	LENGTH	RADIUS	DELTA	CHORD	CHORD DIST.
C1	116.35	325.00	20°30'43"	S 33°04'29" W	115.73
C2	42.02	325.00	7°24'29"	S 19°06'55" W	41.99
C3	43.41	325.00	7°38'13"	S 11°35'06" W	43.38
C4	44.01	325.00	7°49'29"	S 03°57'45" W	43.97
C5	31.43	20.00	89°03'13"	N 37°16'07" W	28.30
C6	15.81	125.00	7°21'17"	N 86°08'52" W	16.60
C7	17.35	50.00	19°52'47"	S 80°03'37" E	17.28
C8	28.62	50.00	32°48'03"	S 53°43'12" E	28.23
C9	51.34	50.00	58°49'52"	S 07°54'14" E	49.11
C10	35.71	50.00	40°55'12"	S 41°34'28" W	34.88
C11	35.71	50.00	40°55'12"	S 82°54'00" W	34.88
C12	55.24	50.00	63°17'42"	N 44°39'20" E	52.42
C13	10.93	15.00	41°45'03"	S 34°13'04" E	10.69
C14	9.14	15.00	34°54'26"	S 74°32'48" E	9.00
C15	34.25	175.00	11°22'46"	N 84°23'36" W	34.19
C16	27.36	20.00	78°23'40"	N 23°02'58" E	25.28
C17	29.36	150.00	11°22'48"	N 42°38'38" W	29.31
C18	10.99	150.00	47°11'54"	N 75°41'15" W	10.99
C19	20.17	150.00	7°42'17"	N 86°08'52" W	20.16
C20	20.16	150.00	7°42'28"	N 78°28'30" W	20.16
C21	78.54	292.00	15°24'43"	S 07°42'21" W	78.31

LEGEND:

- FOUND DAVIS COUNTY SECTION CORNER MONUMENTS (AS NOTED)
- STREET MONUMENT (TO BE SET)
- STREET MONUMENT (SET BY PREVIOUS PLATTING)
- SET REBAR W/ CAP MARKED "BINGHAM ENG."
- SUBDIVISION BOUNDARY LINE
- LOT LINE
- SECTION LINE
- RIGHT-OF-WAY LINE
- CENTERLINE
- UTILITY EASEMENT LINE AS NOTED
- RECORD COORDINATE VALUES AND/OR RECORD DIMENSIONS ARE SHOWN IN BRACKETS
- P.U.E. & D.E.
- LOT RESTRICTED
 ONE STORY STRUCTURE ON A CORNER 10' MIN. SIDE SETBACK
 TWO STORY STRUCTURE ON A CORNER 15' MIN. SIDE SETBACK

Plat Prepared For:
 WOODSIDE HOMES
 39 East Engleridge Drive, Suite 100
 North Salt Lake City, Utah 84054

Plat Prepared By:

BINGHAM ENGINEERING
 5225 Wray Post Way, Salt Lake City, UT 84116
 (801) 532-2520 www.binghamnet.com

Design: ASA
 Drawn: ASA
 Checked: GM
 Reviewed: JRL

NOTES

- Rear Lot corners will be located and marked on the ground with a 5/8" rebar with a plastic cap labeled "BINGHAM ENG". Front Lot corners will not be marked on the ground but the extension of the side lot line to the top of curb will be located and marked by a pin or rivet inset into the top of the curb.
- All public utility easements shown hereon are 10.00 feet wide unless otherwise noted.
- The coordinates shown hereon are based on the Datum of the Davis County Surveyor. Record bearings, distances and coordinate values are shown in brackets []. All other dimensions and coordinate values are measured.
- Approval of this development plat by North Salt Lake City does not constitute any representation as to the adequacy of subsurface soil condition nor the location or depth of groundwater tables.
- The finished floor elevation of any home shall be at least one (1) foot above the lowest top back of curb grade adjacent to the Lot.
- Parcels A and B shall be Open Space Lots. Open Space Lots are hereby ~~conveyed~~ dedicated to the City of North Salt Lake by the recording of this plat. Open Space Lots may be utilized for utility easements, drainage facilities or other uses that benefit the City, surrounding parcels and residents. Parcel B has been delineated as a welland by the U.S. Army Corps of Engineers and uses shall be limited by said delineation.

355

06