

VALENTINE ESTATES TOWNHOMES PHASE 6, A PRUD WOODS CROSS

2260 South

Tax ID Prefix

06-348

Plat ID: 5170

Sheet 1 of 1

Year Recorded: 2012

Roundabout

COMMON AREA

1

1925 West

1900 West

1. 0613 ASSOCIATION OF UNIT OWNERS OF VALENTINE ESTATES TOWNHOMES A PRUD 1.136 AC.

0601
MORISHITA, SHIG
& KYO -
TRUSTEES
0.04 AC.
1942 W

601

0602
ROBBINS, SUSAN
ANN - TRUSTEE
0.04 AC.
1938 W

602

0603
LEBRETON,
DEBORAH
0.02 AC.
1932 W

603

0604
ANDRIZZI, KIMBERLEE
MARIE AND BEAZER,
STEVEN MARK
0.03 AC.
1928 W

604

0605
HAMMER, RACHEL M
0.02 AC.
1922 W

605

0606
FUENTES, FELIX J
0.03 AC.
1918 W

606

2295 South

612

0612
TURNER,
RICHARD MARK
0.04 AC.
1943 W

611

0611
FAUTIN, MONTE
ROGER &
CATHLINE S
0.04 AC.
1939 W

610

0610
WHITTLESEY,
LOGAN
0.02 AC.
1933 W

609

0609
HUNDLEY,
STEPHANIE
0.03 AC.
1929 W

607

0607
DE JONG, KACIE
AND BURBIDGE,
MASON
0.03 AC.
1919 W

608

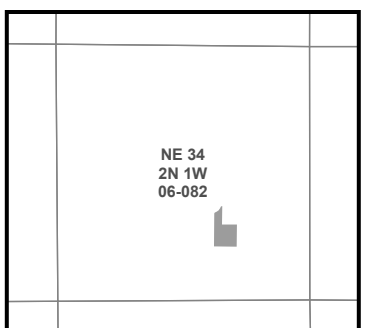
0608
SBP
INVESTMENTS LLC
0.02 AC.
1923 W

2315 South

1950 West



1 inch = 30 feet



NOTE: Distance, bearings and radius values are approximate. User needs to refer to the recorded legal descriptions for exact bearing and distances. For cadastral or technical information, see the dedicated plat and or legal descriptions in recorded documents.