

SKYPARK INDUSTRIAL PARK - BUILDING 79 CONDOMINIUM

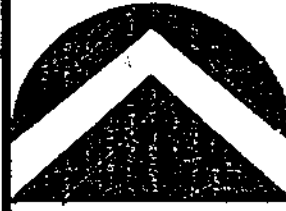
LOCATED IN THE NORTHWEST QUARTER OF SECTION 35
TOWNSHIP 2 NORTH, RANGE 1 WEST, SALT LAKE BASE & MERIDIAN
WOODS CROSS, DAVIS COUNTY, UTAH

Sky Park LLC owns All Units
Not Marked

PREFIX
06-326

LAST #
0006

N



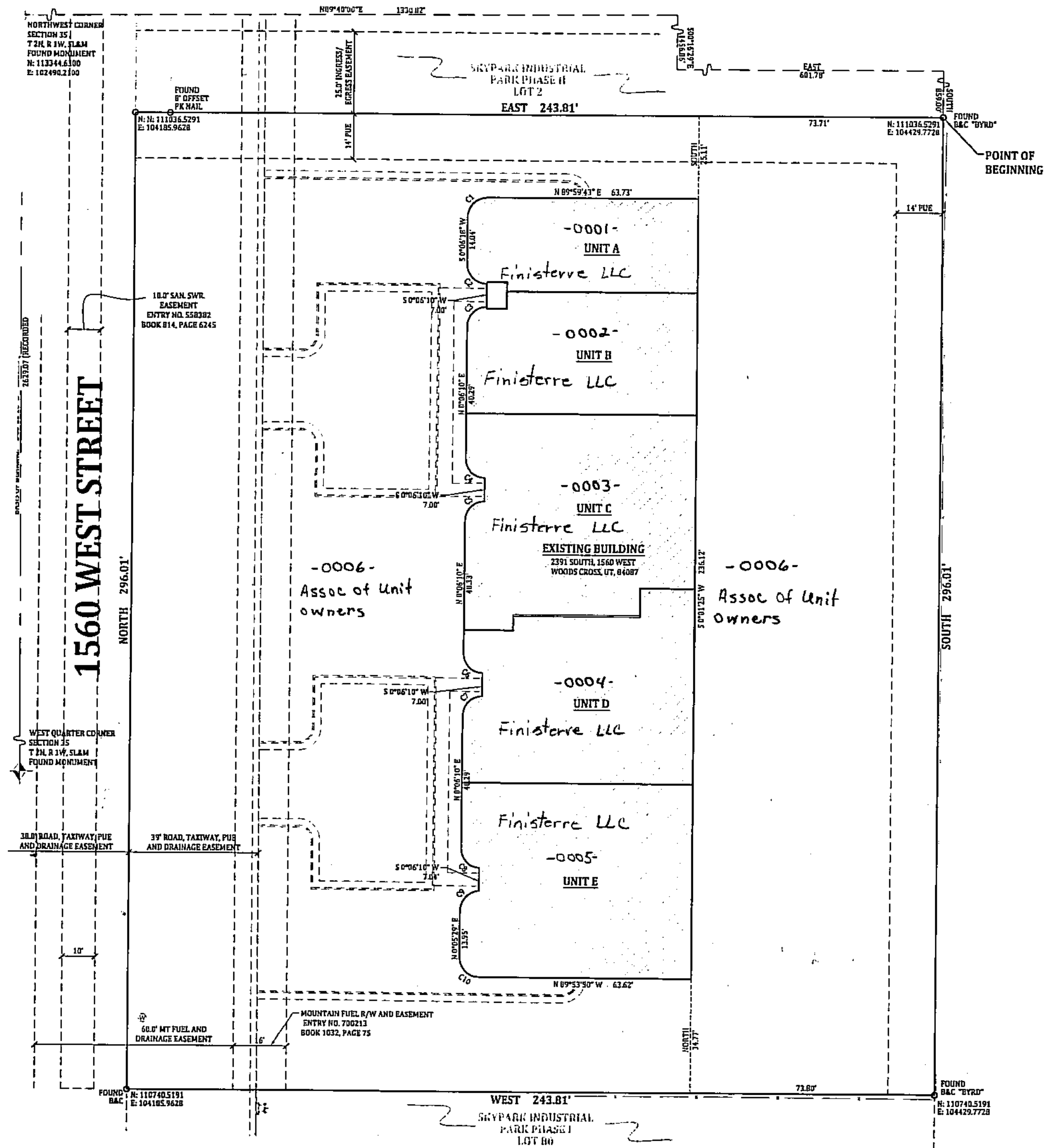
SCALE:
1" = 30'

DEVELOPMENT: SKYPARK INDUSTRIAL - BUILDING 79 CONDOMINIUM
PARK UNITS: A THRU E & COMMON AREA
CITY: WOODS CROSS

NW 1/4 OF SEC. 35, T.2N, R. 1W

S.L.M. DAVIS COUNTY, UTAH

FILE # 4979
R 12-10-09



CURVE TABLE					
CURVE	RADIUS	LENGTH	DELTA	BEARING	CHORD
C1	5.9'	9.38'	92°25'56"	S44°51'11"W	8.43'
C2	5.99'	9.43'	92°09'51"	S44°47'03"E	8.46'
C3	5.80'	9.01'	88°02'14"	N45°14'40"E	8.17'
C4	5.80'	9.25'	90°10'37"	S43°52'16"E	8.33'
C5	5.80'	9.22'	87°56'51"	N45°11'28"E	8.10'
C6	5.80'	9.02'	87°56'51"	S44°53'09"E	8.16'
C7	5.80'	9.25'	90°10'37"	N44°04'33"E	8.33'
C8	5.80'	8.69'	84°42'35"	S43°23'13"E	7.91'
C9	6.23'	9.86'	83°28'31"	N43°08'41"E	8.38'
C10	6.00'	9.80'	83°33'23"	N44°38'13"W	8.75'

LEGEND

- SECTION CORNER
- EXISTING STREET MONUMENT
- PROPOSED STREET MONUMENT
- SET 5/8" REBAR WITH YELLOW PLASTIC CAP, OR NAIL STAMPED "ENSGN ENG. & LAND SURV."
- PUBLIC UTILITY EASEMENT
- EASEMENTS
- PRIVATE AREA
- LIMITED COMMON AREA
- COMMON AREA

ENSGN
SALT LAKE CITY
90 E. Fort Union Blvd
Suite 100
Mojave UT 84047
Phone: 801.255.0529
Fax: 801.255.4449
www.ensgn.com

LAYDN
Phone: 801.547.1100
PLEASANT GROVE
Phone: 801.796.8145
TOOELE
Phone: 435.842.3590

326

06